

CONFÉRENCE DES NATIONS UNIES SUR
LE COMMERCE ET LE DÉVELOPPEMENT



UNITED NATIONS CONFERENCE
ON TRADE AND DEVELOPMENT

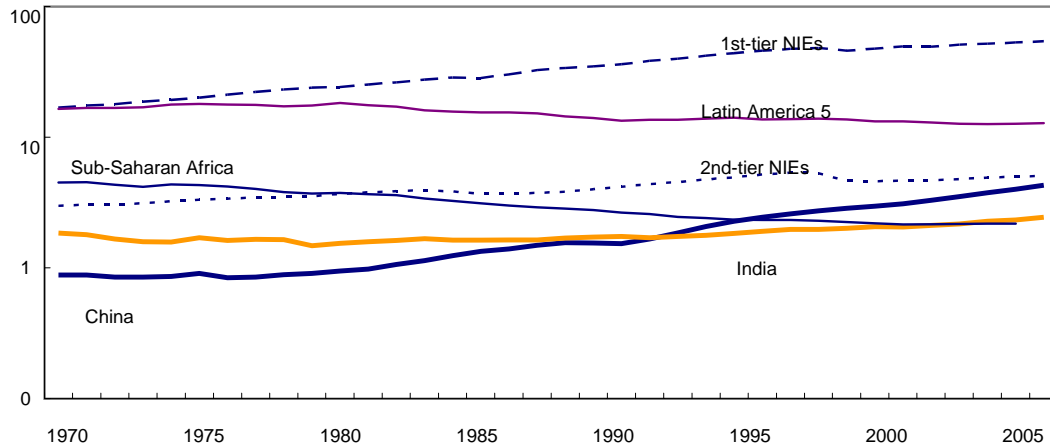
**Background statistical charts and tables for the
Report of the Secretary-General of UNCTAD to
UNCTAD XII**

Globalization for development: Opportunities and challenges

List of charts and tables

	Page
Chart 1 GDP per capita (log scale) in selected developing countries and regions compared to the G-7, 1970-2005	3
Chart 2 Real GDP growth, 1995-2006	3
Chart 3 Real investment, 1995-2006	4
Chart 4 Real consumption, 1995-2006	5
Chart 5 Real exports of goods and services, 1995-2006	6
Chart 6 Real imports of goods and services, 1995-2006	7
Chart 7 Employment (1996=100) and unemployment rates (per cent) 1996-2006	8
Chart 8 Current account balance as per cent of GDP, 1995-2006	9
Chart 9 Unit labour costs, 1993-2006	10
Chart 10 Real effective exchange rates, 1995-2006	11
Chart 11 Official Development Assistance from DAC donors 1988-2005	12
Chart 12 Real short-term interest rate and real GDP growth, 1986-2006 South and South-East Asia / South and South-East Asia, including China	12
Chart 13 Real short-term interest rate and real GDP growth, 1986-2006 Latin America / Latin America, less Brazil	13
Chart 14 Real short-term interest rate and real GDP growth, 1997-2006 Eastern European economies	14
Chart 15 Real short-term interest rate and real GDP growth, 1986-2006 Sub-Saharan Africa	14
Chart 16 Real short-term interest rate and real GDP growth, 1970-2006 United States / European Union 6	15
Chart 17 Governance and per capita income growth, selected groups of economies, 1996-2006	16
Table 1 Real gross domestic product	17
Table 2 Current account	22
Table 3 Trade in merchandise: Total exports	27
Table 4 Trade in services: Total exports	30
Table 5 Direct Investment in reporting economy (FDI Inward)	33
Table 6 Aid to GNI ratio, developing economies	33
Table 7 Official Development Assistance from All Donors to Developing Countries Total, Economies in Transition; Heavily Indebted Poor Countries - Disbursement	34

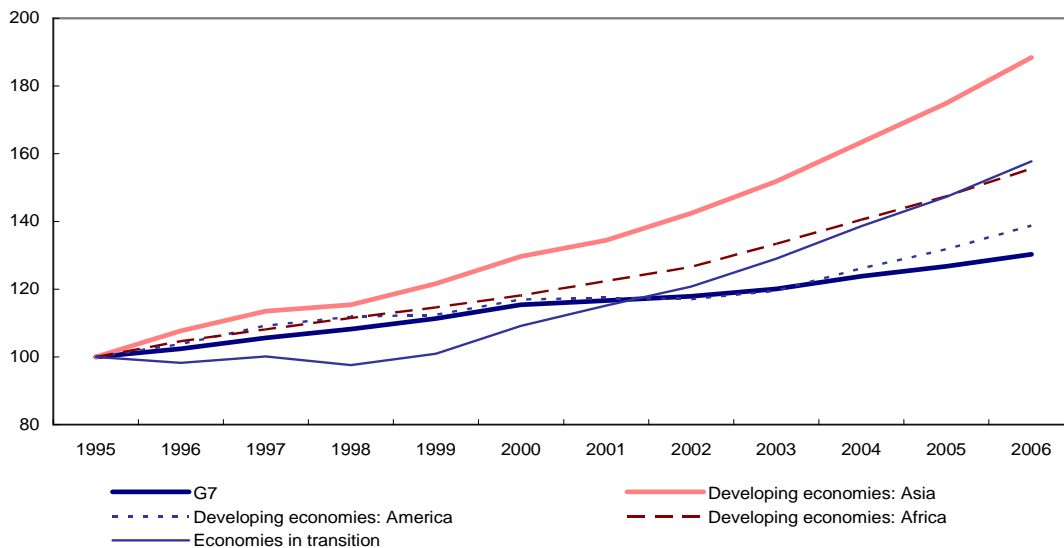
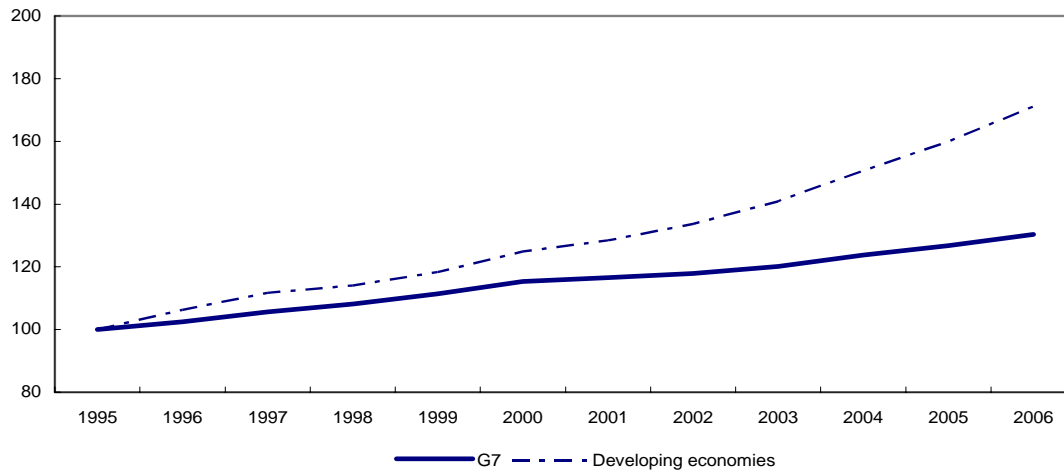
Chart 1
GDP per capita (log scale) in selected developing countries and regions compared to the G-7, 1970–2005



Source: UNCTAD and United Nations with the exception of sub-Saharan Africa whose source is World Development Indicators 2006, World Bank. Calculations are based on constant GDP (1995 US\$).

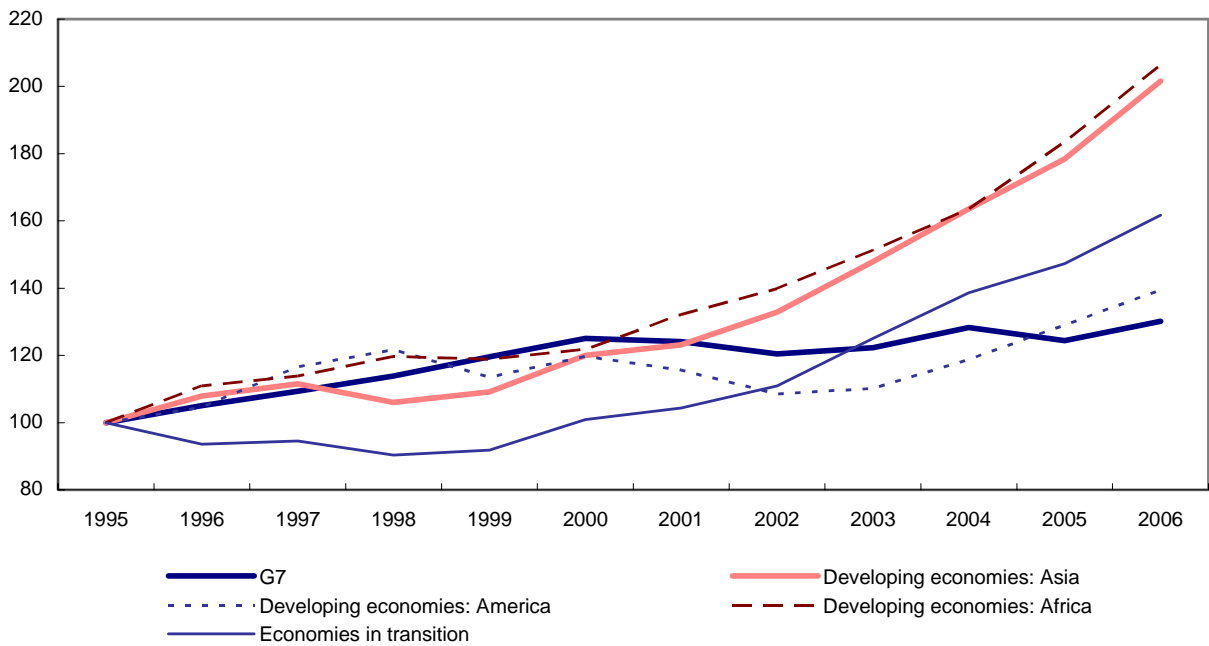
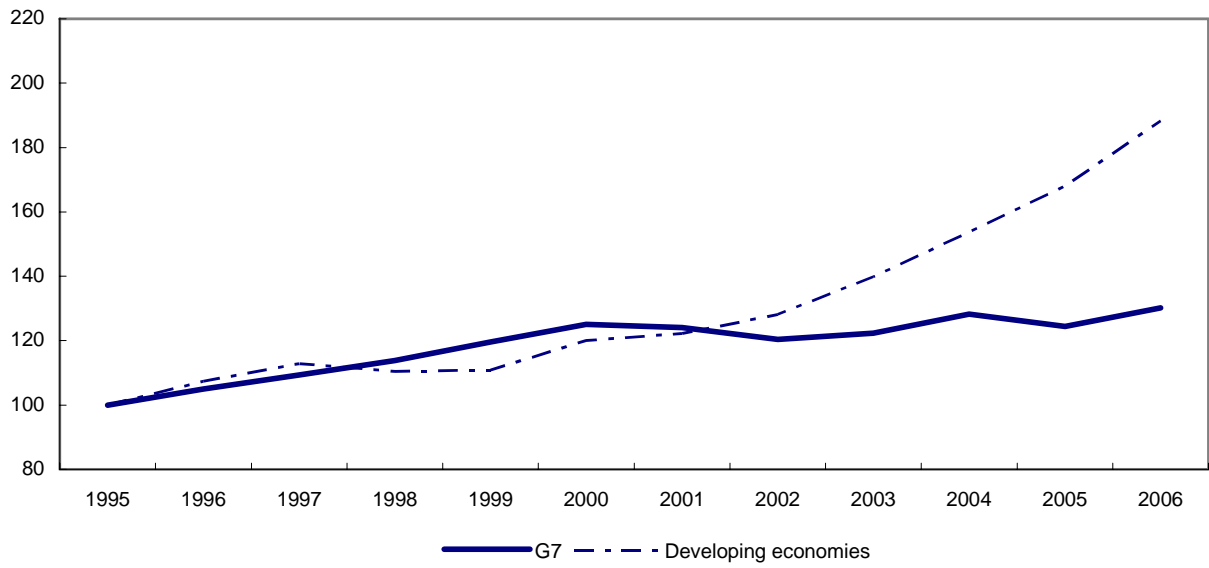
Note: Latin America-5 comprises Argentina, Brazil, Chile, Colombia and Mexico; the first-tier NIEs comprise Hong Kong (China), the Republic of Korea, Singapore and Taiwan Province of China; the second-tier NIEs comprise Indonesia, Malaysia, the Philippines and Thailand. South Africa is not included in sub-Saharan Africa.

Chart 2
Real GDP growth, 1995–2006
(Index numbers, 1995 = 100)



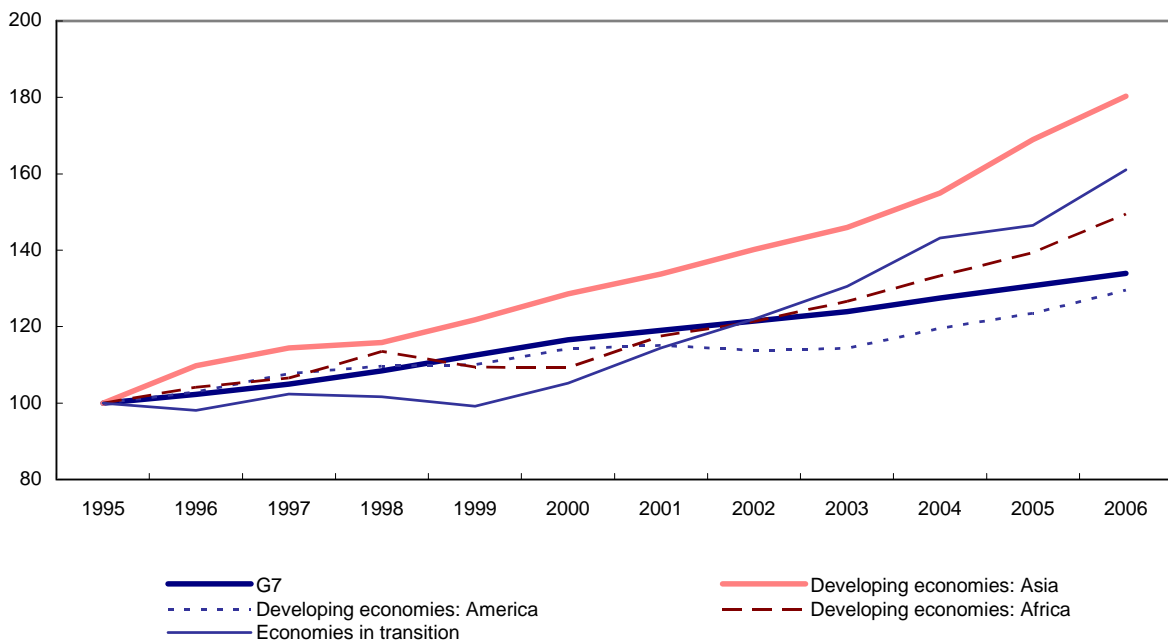
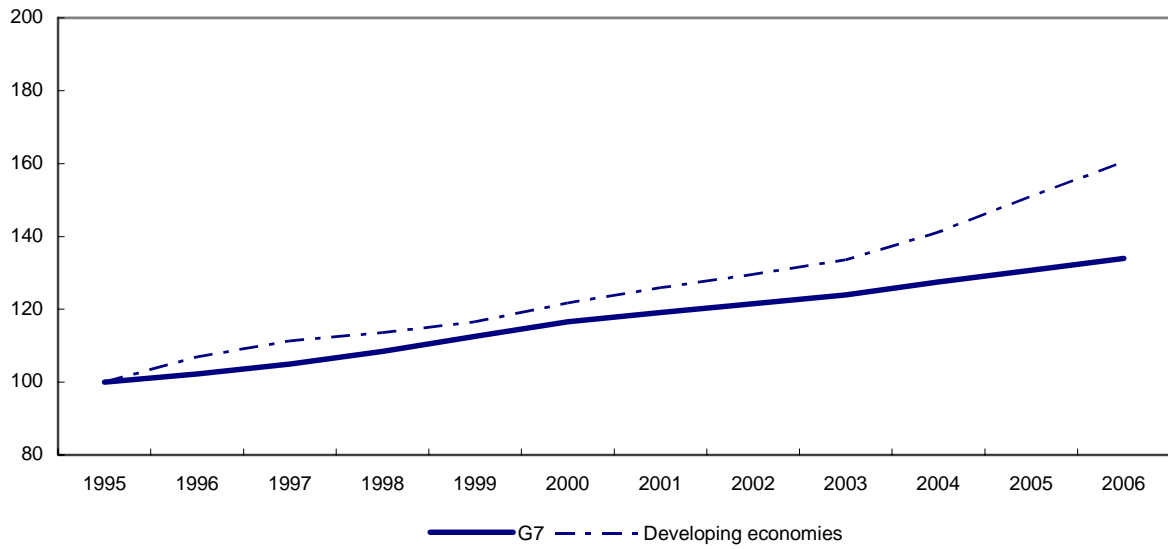
Source: UNCTAD secretariat calculations, based on data from United Nations Statistics Division.

Chart 3
Real investment, 1995–2006
(Index numbers, 1995 = 100)



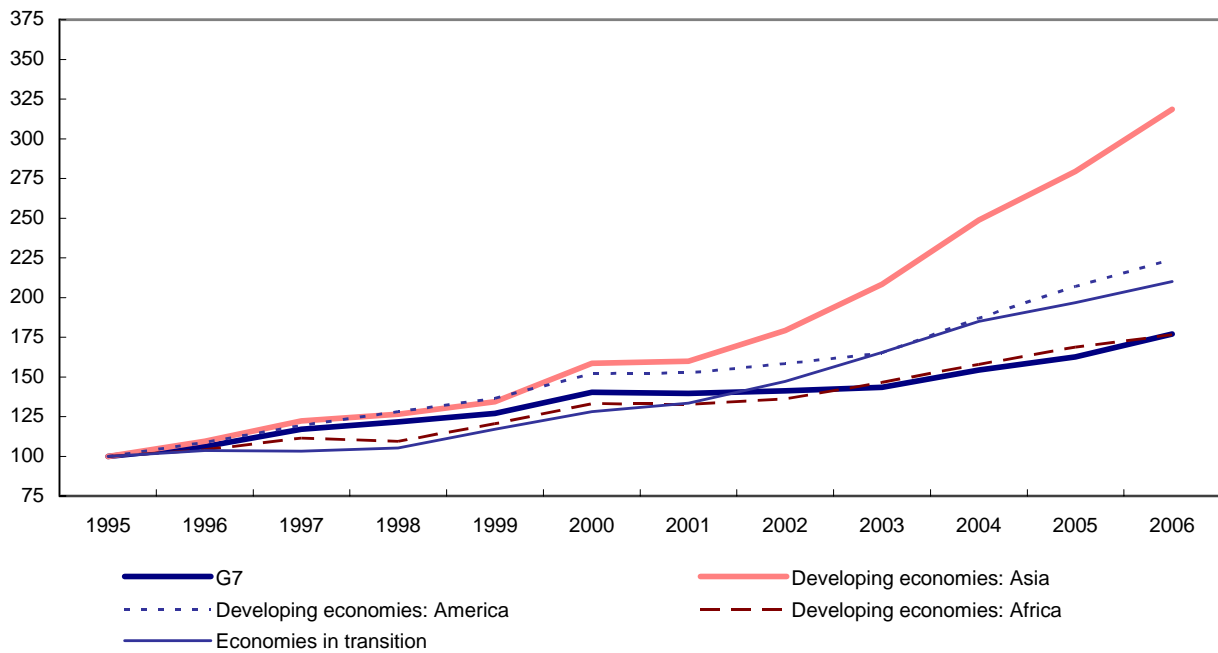
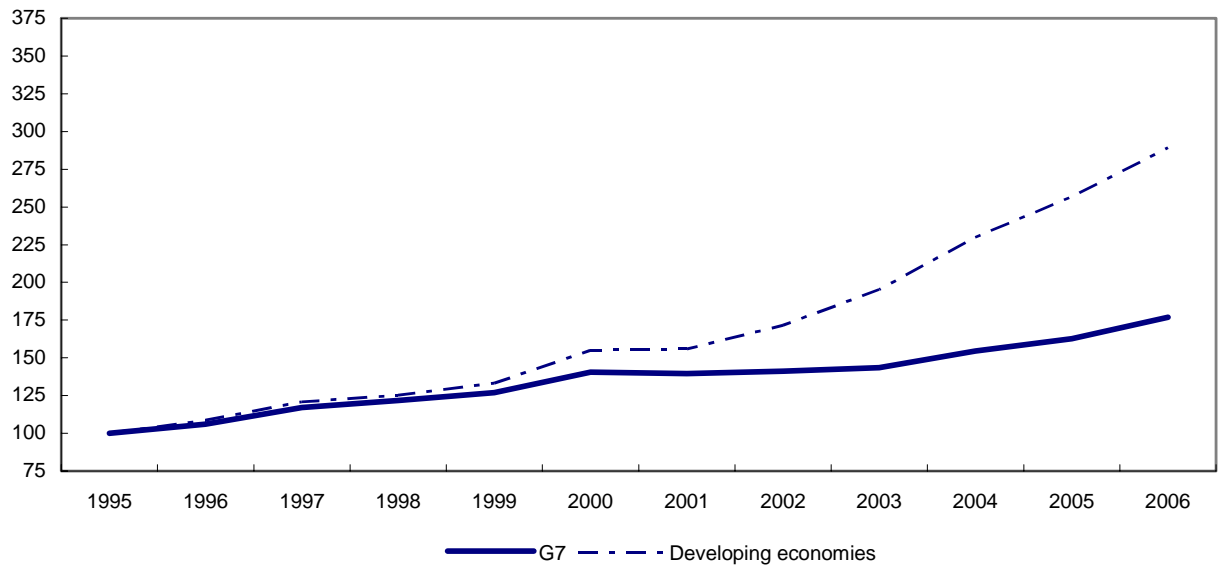
Source: UNCTAD secretariat calculations, based on data from United Nations Statistics Division.

Chart 4
Real consumption, 1995–2006
(Index numbers, 1995 = 100)



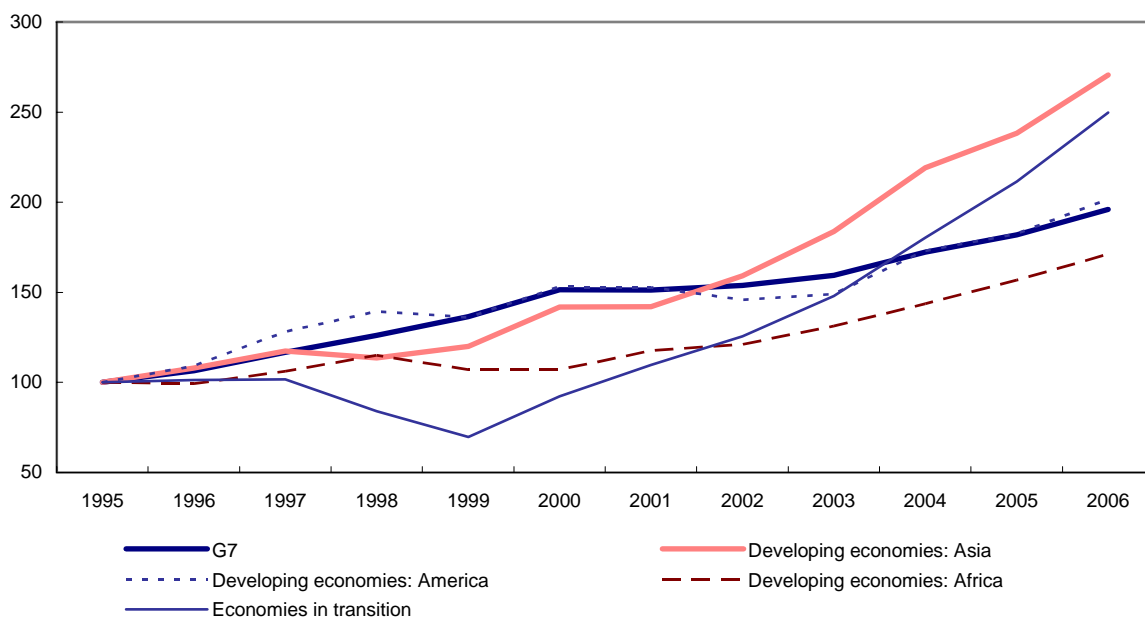
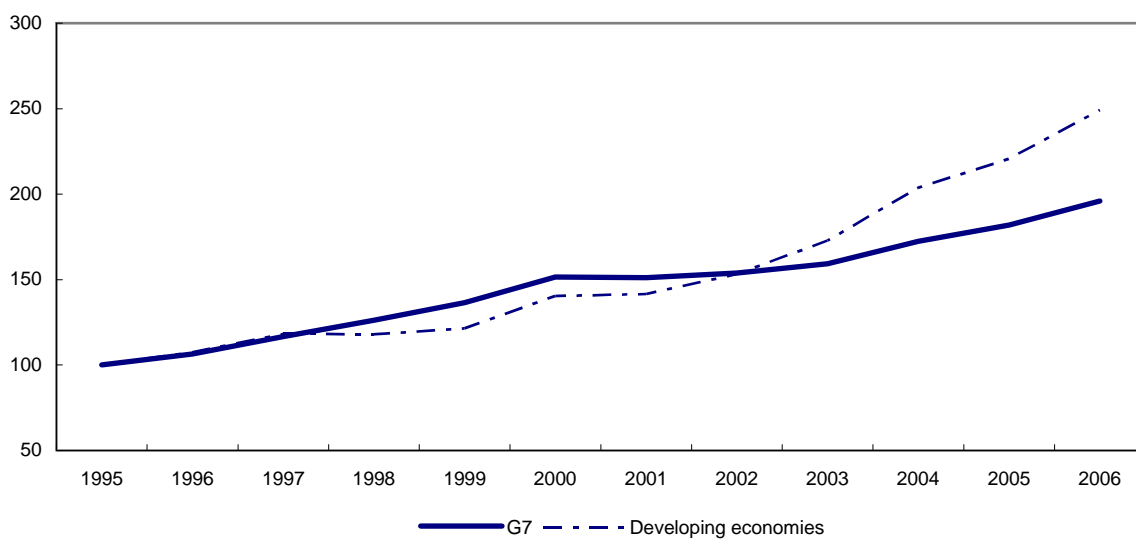
Source: UNCTAD secretariat calculations, based on data from United Nations Statistics Division.

Chart 5
Real exports of goods and services, 1995–2006
(Index numbers, 1995 = 100)



Source: UNCTAD secretariat calculations, based on data from United Nations Statistics Division and IMF.

Chart 6
Real imports of goods and services, 1995–2006
(Index numbers, 1995 = 100)



Source: UNCTAD secretariat calculations, based on data from United Nations Statistics Division and IMF.

Chart 7
Employment (1996=100) and unemployment rates (per cent)
1996-2006

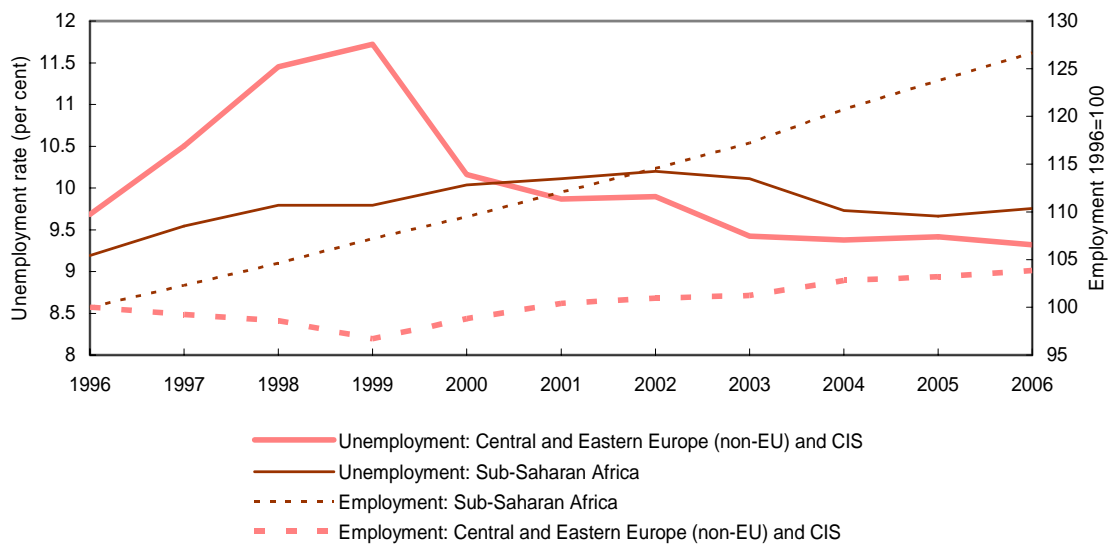
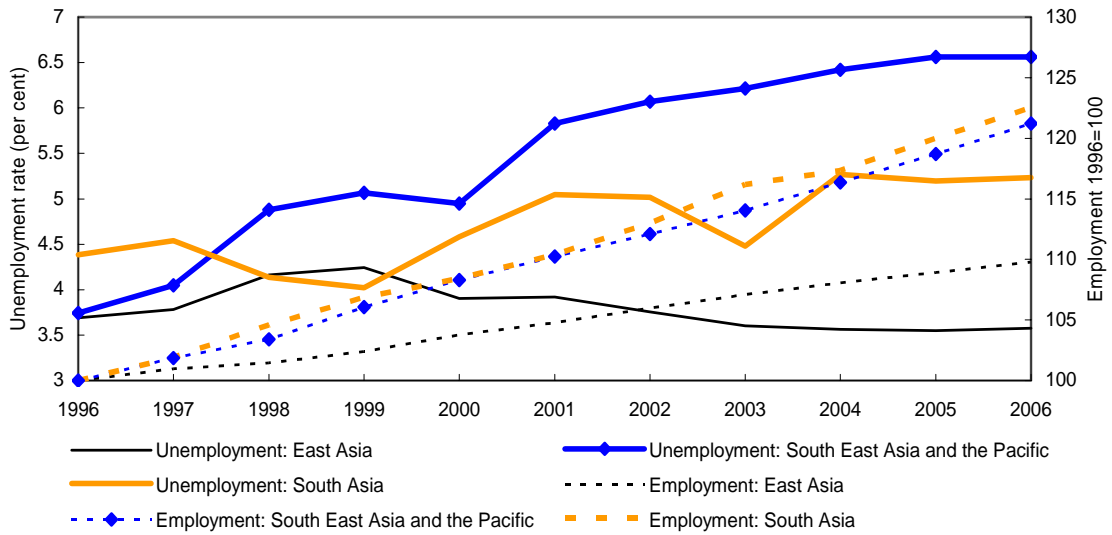
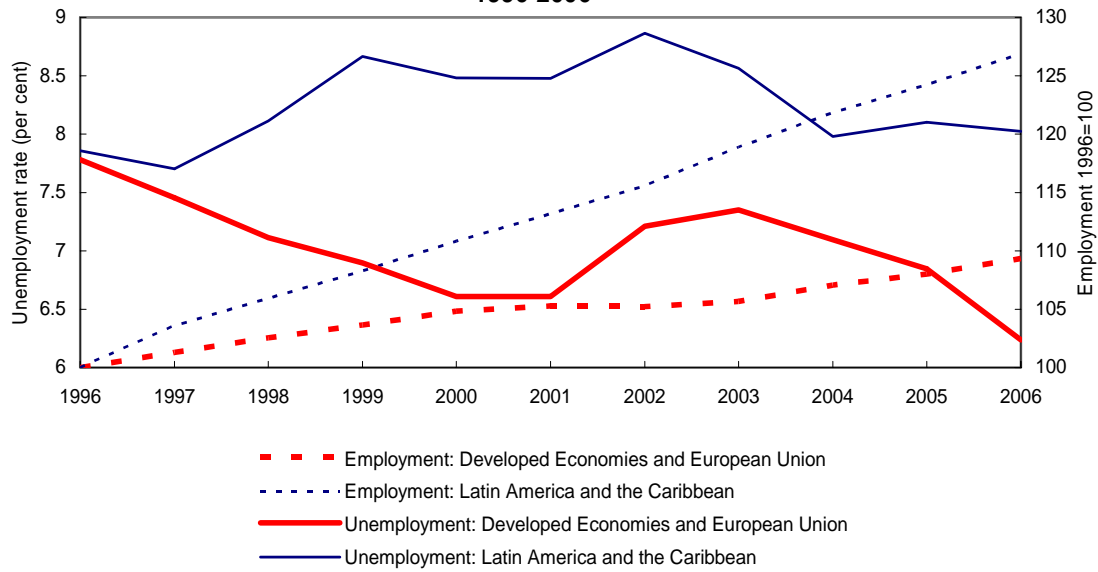
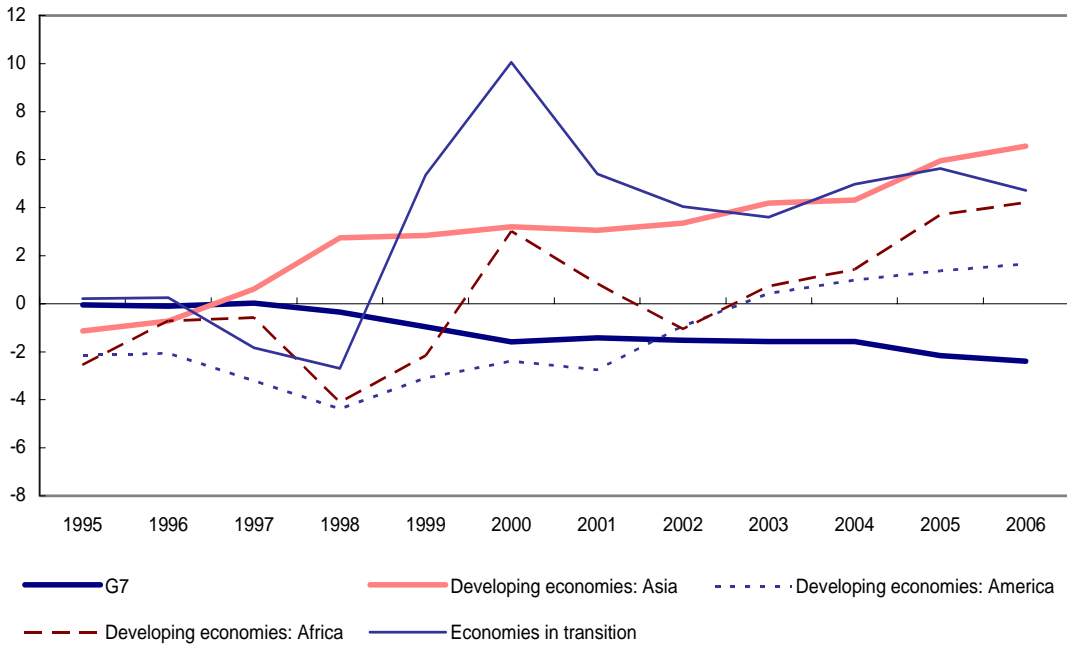
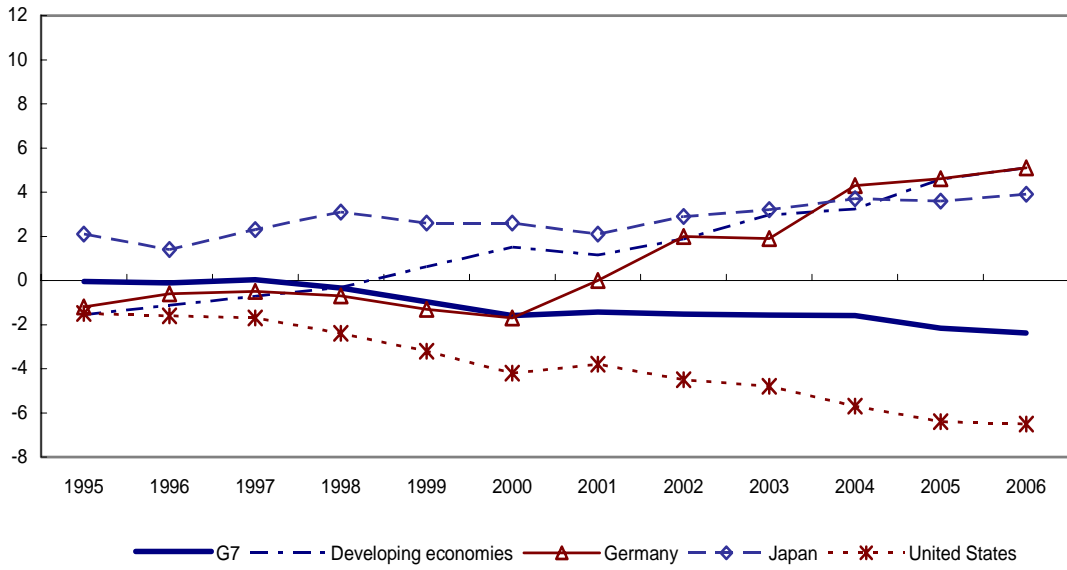
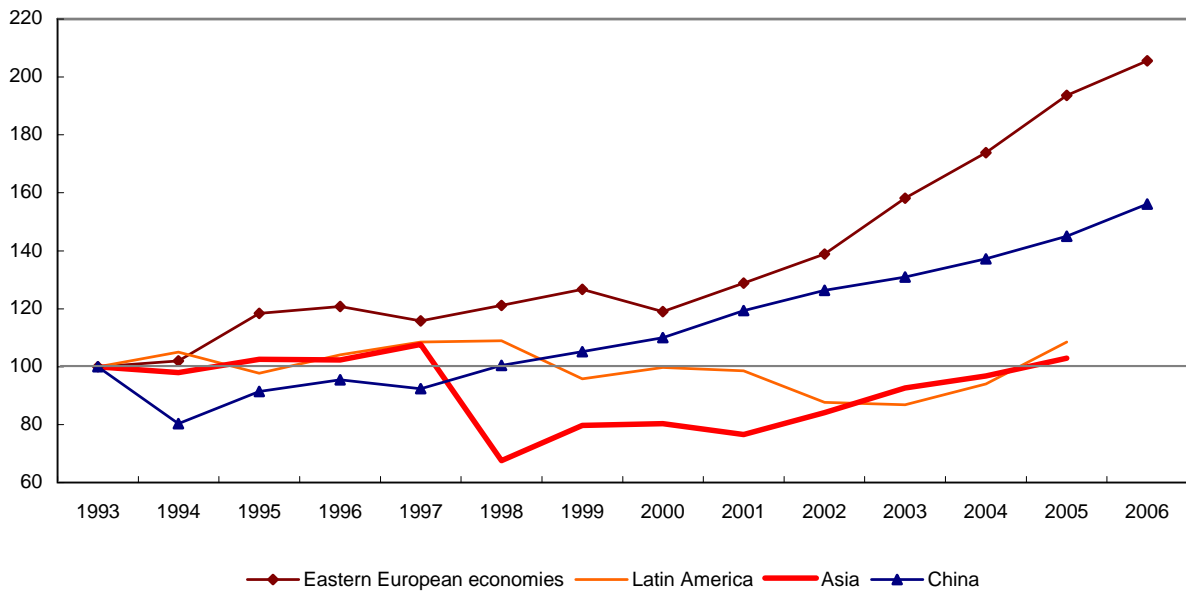
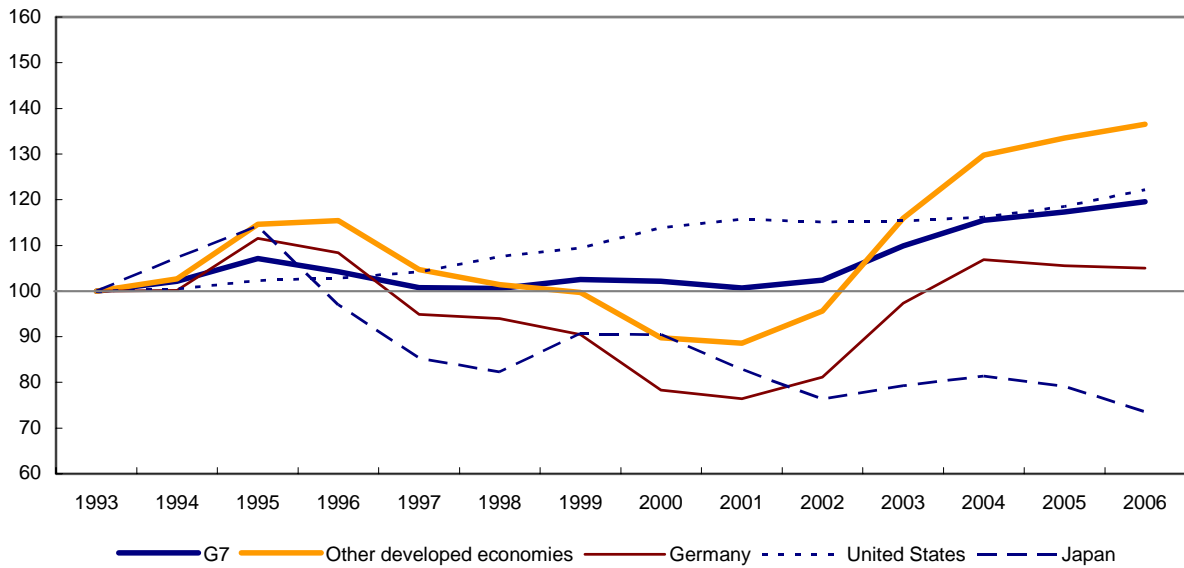


Chart 8
Current account balance as per cent of GDP, 1995–2006



Source: UNCTAD secretariat calculations, based on data from IMF.

Chart 9
Unit labour costs, 1993–2006
(US dollars, 1993 = 100)



Source: UNCTAD secretariat calculations, based on ILO, Key Indicators of the Labour Market (KILM); OECD; and Economist Intelligence Unit.

Note: Unit labour costs: whole economy excl. Slovakia and Taiwan Province of China (industry), and the United States (non-agriculture).

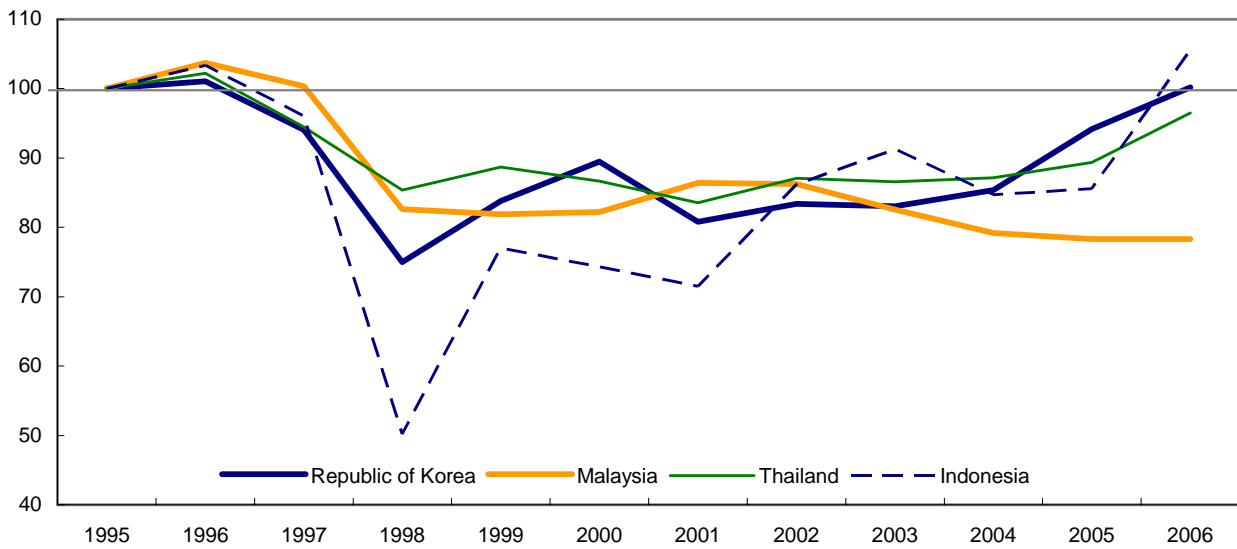
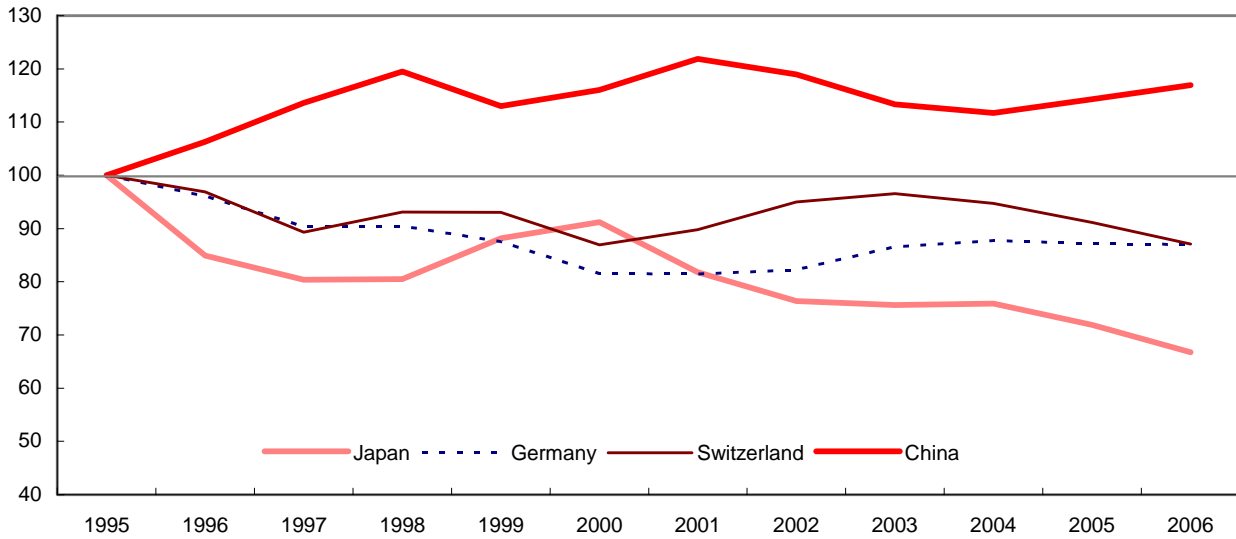
Eastern European economies refer to Czech Republic, Estonia, Hungary, Lithuania, Poland, Slovakia and Slovenia.

Asia refers to Indonesia, the Philippines, the Republic of Korea, Singapore, Taiwan Province of China, and Thailand.

Latin America refers to Argentina, Brazil, Chile, Colombia, Ecuador, Mexico and Peru.

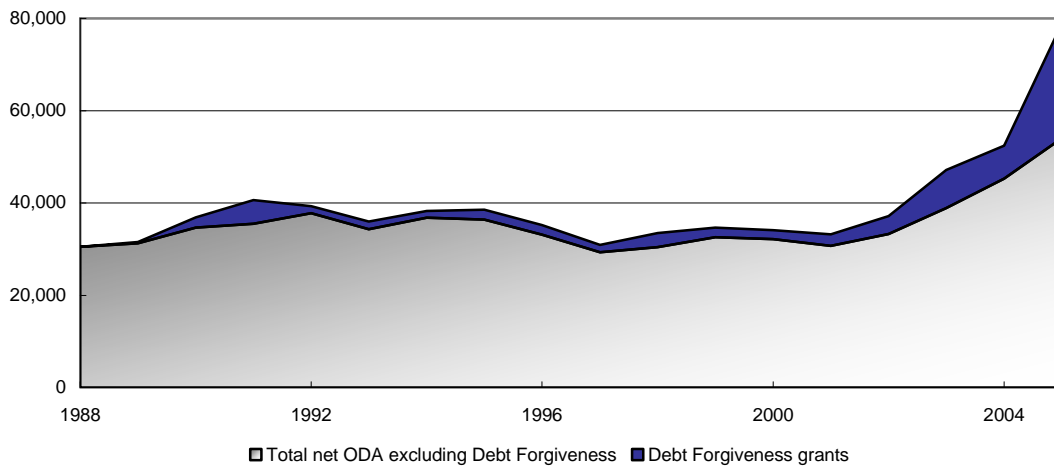
Developed economies refer to Australia, Austria, Belgium, Cyprus, Denmark, Finland, Greece, Iceland, Ireland, Israel, the Netherlands, New Zealand, Norway, Portugal, Spain, Sweden and Switzerland.

Chart 10
Real effective exchange rates, 1995–2006
(1995 = 100)



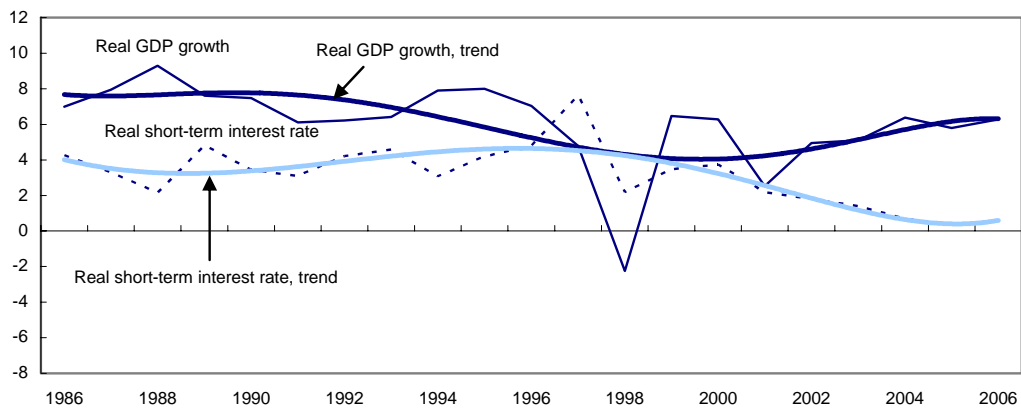
Source: JP Morgan; and data for Germany from IMF, *IFS* database.

Chart 11
Official Development Assistance from DAC donors 1988–2005
(Million US\$)

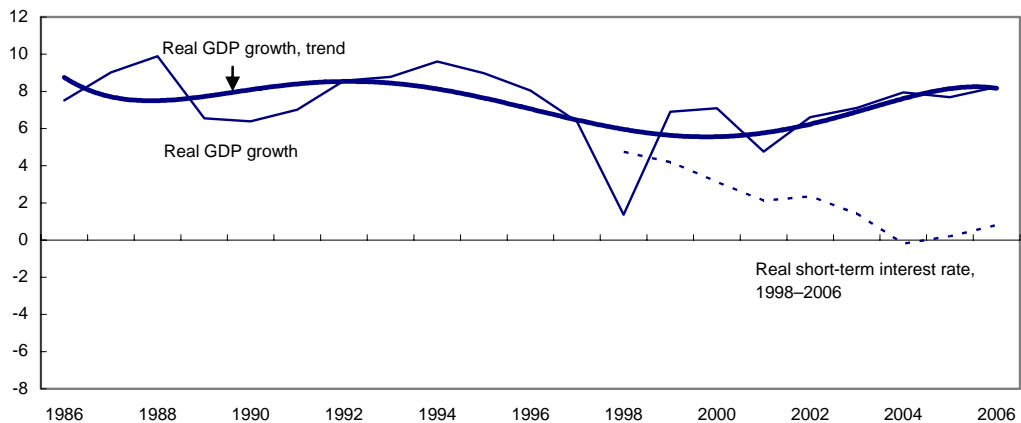


Source: OECD, *Development Assistance Committee Database* online.

Chart 12
Real short-term interest rate and real GDP growth, 1986–2006
(per cent)
South and South-East Asia



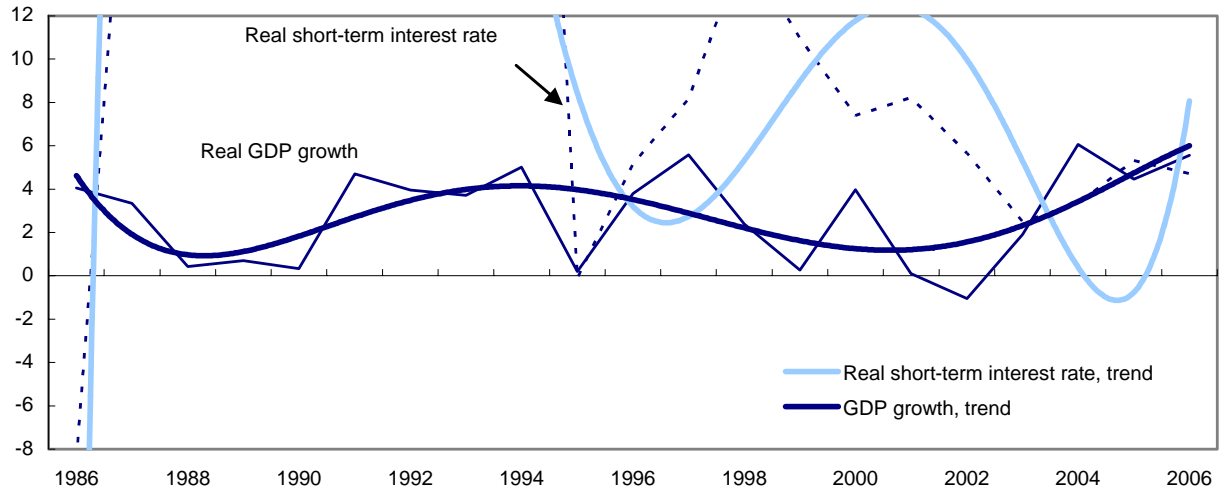
South and South-East Asia, including China



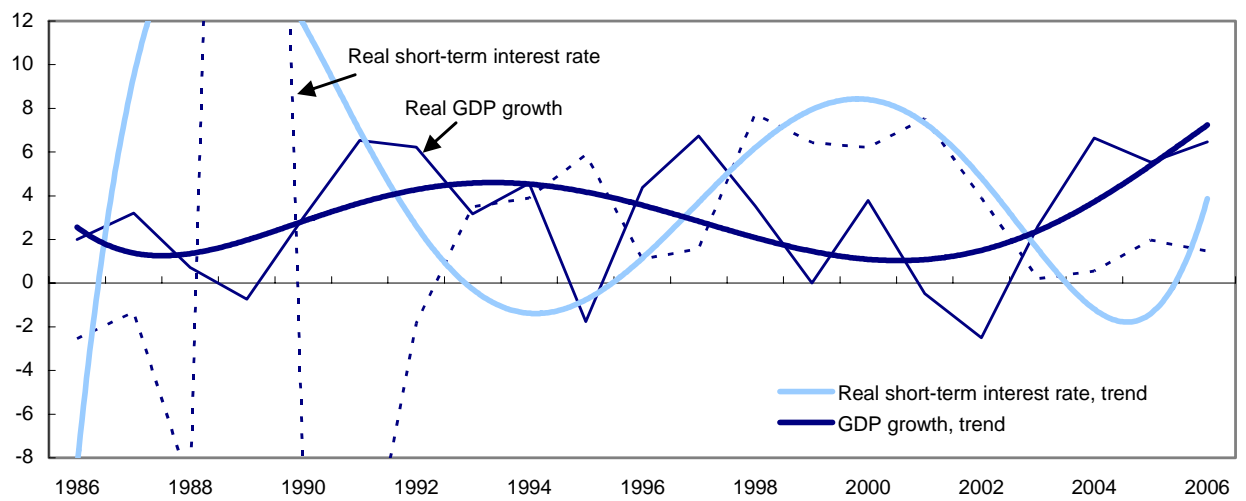
Source: OECD, IMF, World Bank and Datastream.

Note: South and South-East Asia: Bangladesh, India, Indonesia, Malaysia, the Philippines, the Republic of Korea, Singapore, Taiwan Province of China, and Thailand. Trend: polynom 5 grades. Real short-term interest rates are GDP weighted.

Chart 13
Real short-term interest rate and real GDP growth, 1986–2006
(per cent)
Latin America



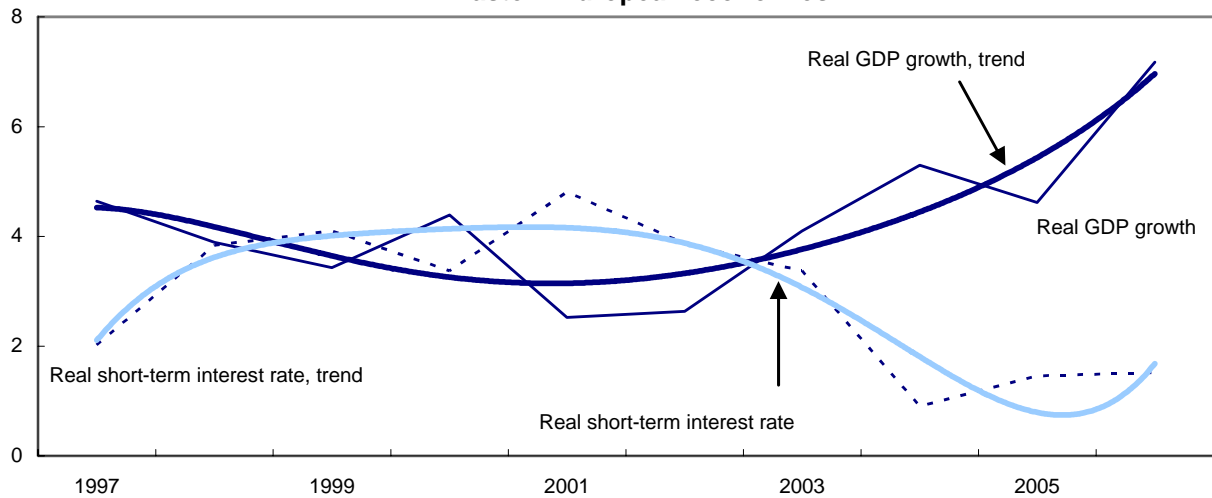
Latin America, excluding Brazil



Source: OECD, IMF, World Bank and Datastream.

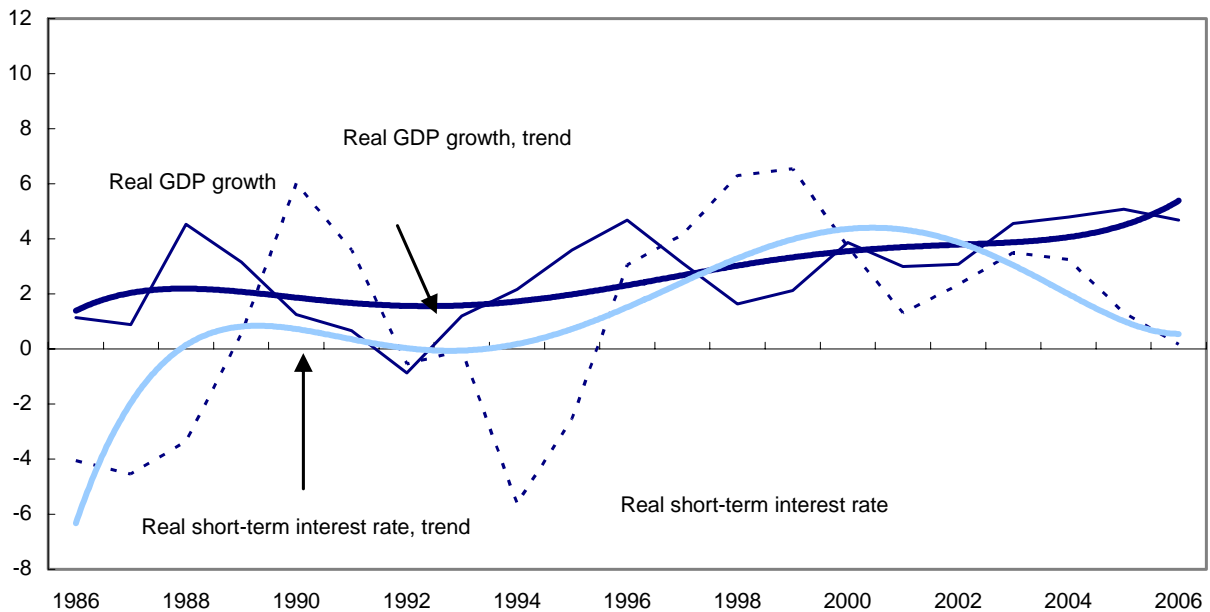
Note: Latin America: Argentina, Brazil, Chile, Colombia, Costa Rica, Mexico, Peru, Uruguay and Venezuela.
Trend: polynom 5 grades. Real short-term interest rates are GDP weighted.

Chart 14
Real short-term interest rate and real GDP growth, 1997–2006
(per cent)
Eastern European economies



Source: Eastern European Economies: Bulgaria, Czech Republic, Estonia, Hungary, Latvia, Lithuania, Poland, Slovak Republic and Slovenia. Trend: polynom 5 grades.
Note: IMF, and World Bank. Real short-term interest rates are GDP weighted.

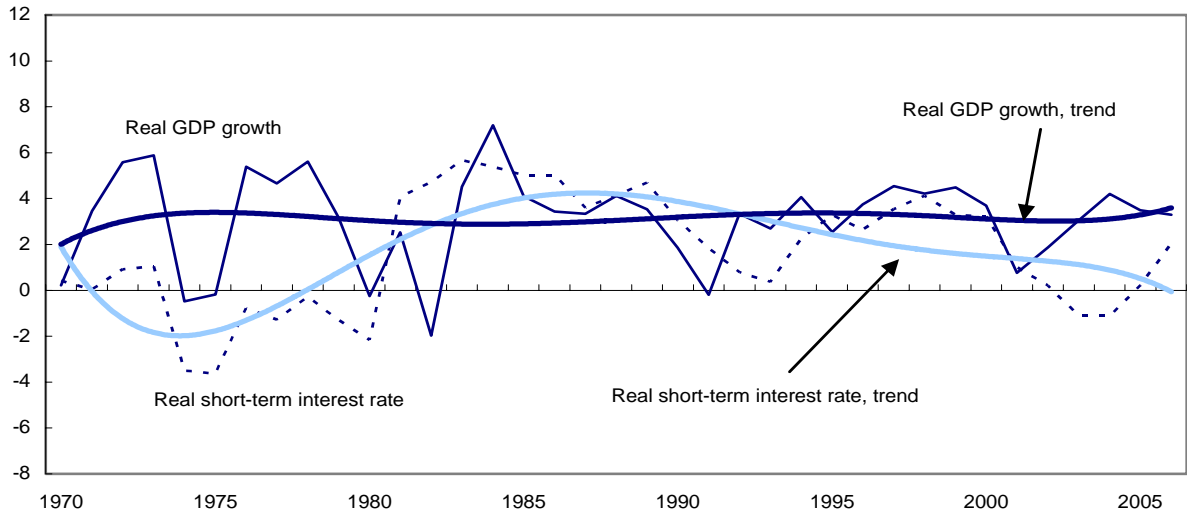
Chart 15
Real short-term interest rate and real GDP growth, 1986–2006
(per cent)
Sub-Saharan Africa



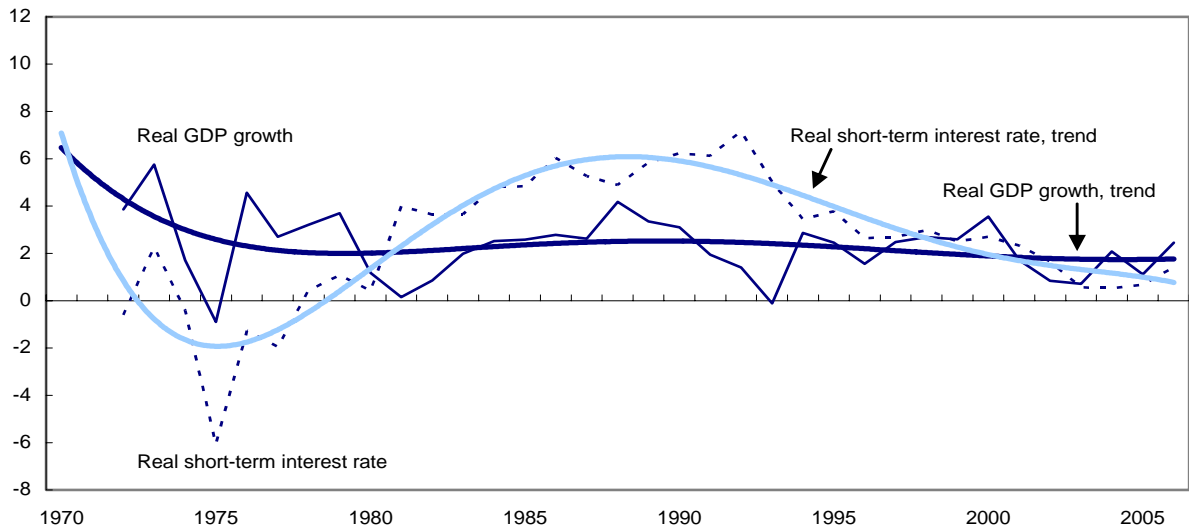
Source: OECD, IMF, World Bank and Datastream.

Note: Sub-Saharan Africa: Burkinga Faso, Côte d'Ivoire, Mauritius, Niger, Senegal, South Africa, Togo, Cameroon, Central African Republica, Chad, Republic of Congo, Gabon, Lesotho, Malawi, Nigeria, Sierra Leona, and Uganda. Trend: polynom 5 grades. Real short-term interest rates are GDP weighted.

Chart 16
Real short-term interest rate and real GDP growth, 1970–2006
(per cent)
United States



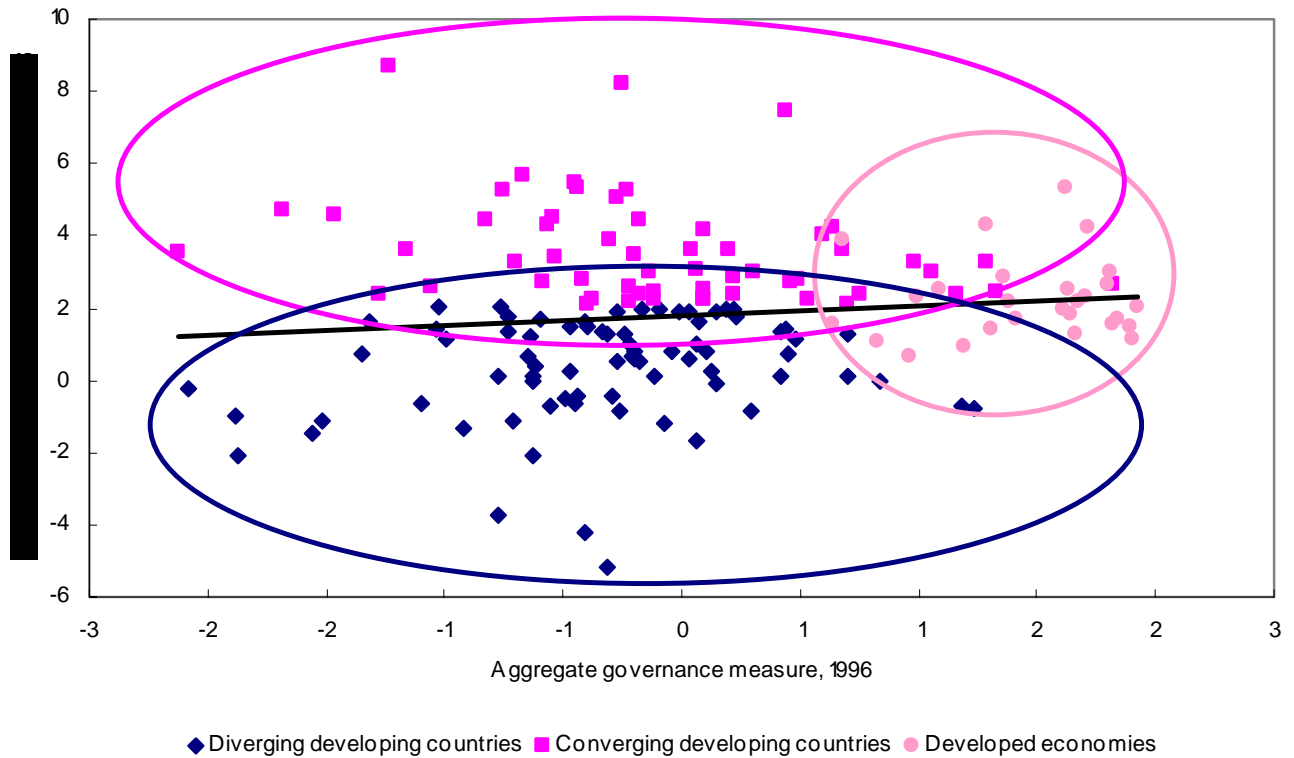
European Union 6



Source: Interest rates: AMECO; OECD. GDP: WDI.

Note: Trend: polynom 5 grades.

Chart 17
Governance and per capita income growth,
selected groups of economies, 1996–2006



Source: UNCTAD secretariat calculations, based on data from Kaufmann, Kraay and Mastruzzi, 2005; and UNCTAD GlobStat database.

Note: The aggregate governance measure is the unweighted average of the six measures provided by Kaufmann, Kraay and Mastruzzi, 2005. The group of developing economies is separated into converging and diverging developing economies depending on whether or not their average rate of real per capita growth during the period 1996–2006 exceeded the median rate of growth in developed countries during that period.

Table 1
Real gross domestic product

	<i>Annual average growth rate</i>			
	<i>1995–2000</i>	<i>2000–2005</i>	<i>1995–2005</i>	<i>2005–2006</i>
WORLD	3.2%	2.8%	2.9%	4.0%
DEVELOPED ECONOMIES	3.0%	2.0%	2.5%	2.9%
G7	2.9%	1.9%	2.3%	2.8%
Canada	4.3%	2.8%	3.6%	2.7%
France	2.9%	1.5%	2.3%	2.0%
Germany	2.0%	0.7%	1.4%	2.7%
Italy	1.9%	0.6%	1.4%	1.9%
Japan	0.5%	1.4%	0.9%	2.2%
United Kingdom	3.2%	2.4%	2.8%	2.7%
United States	4.2%	2.6%	3.2%	3.3%
Developed economies less G7	3.7%	2.3%	3.0%	3.7%
Andorra	1.5%	7.1%	5.1%	7.2%
Australia	4.1%	3.2%	3.6%	2.7%
Austria	2.9%	1.5%	2.2%	3.2%
Belgium	–	–	–	3.0%
Belgium-Luxembourg	2.9%	1.6%	2.4%	–
Bermuda	3.6%	3.2%	3.3%	2.5%
Cyprus	3.9%	3.0%	3.6%	3.8%
Czech Republic	0.9%	3.5%	2.2%	6.1%
Denmark	2.8%	1.2%	1.9%	3.3%
Estonia	5.5%	7.3%	6.2%	11.4%
Finland	4.7%	2.4%	3.4%	5.5%
Greece	3.5%	4.4%	4.1%	4.2%
Hungary	4.2%	4.1%	4.3%	3.9%
Iceland	4.8%	3.7%	4.0%	2.9%
Ireland	9.8%	5.1%	7.5%	6.0%
Israel	4.2%	1.7%	2.8%	5.1%
Latvia	5.4%	7.7%	6.5%	11.9%
Lithuania	4.4%	7.7%	5.7%	7.5%
Luxembourg	–	–	–	5.8%
Malta	4.9%	0.4%	2.6%	2.5%
Netherlands	3.8%	0.7%	2.3%	2.9%
New Zealand	2.5%	3.7%	3.2%	1.5%
Norway	3.5%	2.0%	2.6%	2.9%
Poland	5.1%	3.1%	3.7%	5.8%
Portugal	4.2%	0.5%	2.4%	1.3%
San Marino	5.5%	2.3%	4.0%	0.0%
Slovakia	3.6%	4.9%	3.9%	8.2%
Slovenia	4.3%	3.6%	3.9%	5.2%
Spain	4.2%	3.1%	3.8%	3.9%
Sweden	3.3%	2.3%	2.8%	4.4%
Switzerland	2.0%	0.9%	1.5%	2.7%
DEVELOPING ECONOMIES	4.2%	5.2%	4.5%	6.9%
Developing economies less China	3.4%	4.2%	3.6%	5.9%
<i>Developing economies: Africa</i>	3.3%	4.7%	3.8%	5.5%
<i>Eastern Africa</i>	3.6%	3.4%	3.3%	5.8%
Burundi	-0.4%	2.7%	1.1%	5.1%
Comoros	1.8%	2.2%	2.1%	–
Djibouti	0.8%	2.9%	1.8%	4.5%
Eritrea	1.5%	2.7%	1.1%	2.0%
Ethiopia	4.3%	3.9%	4.2%	10.6%
Kenya	2.1%	3.1%	2.5%	6.0%
Madagascar	3.9%	2.2%	2.9%	4.7%

	Annual average growth rate			
	1995–2000	2000–2005	1995–2005	2005–2006
Malawi	3.7%	2.9%	2.3%	8.5%
Mauritius	5.6%	3.7%	4.9%	3.7%
Mozambique	8.7%	8.6%	8.4%	8.5%
Rwanda	10.1%	4.8%	7.2%	4.2%
Seychelles	6.9%	-2.5%	1.5%	4.5%
Somalia	1.8%	2.9%	2.6%	–
Uganda	6.7%	5.7%	6.1%	5.4%
United Republic of Tanzania	4.0%	6.9%	5.5%	6.9%
Zambia	2.2%	4.7%	3.4%	6.0%
Zimbabwe	-0.2%	-4.9%	-3.3%	-4.8%
<i>Middle Africa</i>	<i>3.2%</i>	<i>6.1%</i>	<i>4.2%</i>	<i>6.5%</i>
Angola	6.3%	9.2%	6.8%	15.3%
Cameroon	4.9%	4.4%	4.6%	3.5%
Central African Republic	2.6%	-0.1%	1.4%	3.5%
Chad	2.9%	15.7%	8.0%	1.3%
Congo	1.8%	4.1%	3.2%	6.4%
Dem. Rep. of the Congo	-3.8%	4.4%	-0.6%	5.1%
Equatorial Guinea	35.3%	22.9%	29.4%	1.0%
Gabon	-0.4%	1.4%	-0.1%	1.0%
Sao Tome and Principe	2.1%	4.2%	3.2%	8.0%
<i>Northern Africa</i>	<i>3.5%</i>	<i>5.1%</i>	<i>4.1%</i>	<i>5.9%</i>
Algeria	3.2%	5.1%	3.9%	2.7%
Egypt	5.0%	4.3%	4.5%	6.8%
Libyan Arab Jamahiriya	1.2%	6.3%	3.1%	5.6%
Morocco	3.2%	4.2%	3.5%	7.3%
Sudan	2.9%	6.7%	5.5%	12.2%
Tunisia	5.5%	4.5%	4.9%	5.3%
<i>Southern Africa</i>	<i>2.6%</i>	<i>3.7%</i>	<i>3.2%</i>	<i>4.9%</i>
Botswana	6.0%	5.5%	5.9%	4.2%
Lesotho	2.2%	2.5%	2.1%	5.6%
Namibia	3.5%	4.6%	4.0%	4.6%
South Africa	2.5%	3.6%	3.1%	5.0%
Swaziland	3.4%	2.3%	2.7%	2.1%
<i>Western Africa</i>	<i>3.8%</i>	<i>5.1%</i>	<i>4.2%</i>	<i>4.7%</i>
Benin	4.9%	4.2%	4.7%	4.1%
Burkina Faso	5.2%	6.3%	4.7%	6.4%
Cape Verde	8.6%	5.2%	7.0%	5.8%
Côte d'Ivoire	3.6%	0.5%	1.3%	1.4%
Gambia	4.6%	4.3%	4.4%	6.5%
Ghana	4.4%	5.0%	4.6%	6.2%
Guinea	4.4%	2.9%	3.6%	2.8%
Guinea-Bissau	-2.7%	-0.2%	-1.0%	2.7%
Liberia	38.0%	-6.5%	12.6%	9.7%
Mali	5.5%	6.0%	6.1%	4.6%
Mauritania	4.4%	5.1%	4.7%	11.7%
Niger	4.8%	4.1%	4.1%	3.4%
Nigeria	2.9%	6.6%	4.6%	5.3%
Senegal	5.4%	4.7%	5.1%	3.3%
Sierra Leone	-5.2%	13.7%	5.4%	7.4%
Togo	4.2%	2.5%	2.6%	1.8%
<i>Developing economies: America</i>	<i>3.0%</i>	<i>2.4%</i>	<i>2.3%</i>	<i>5.5%</i>
<i>Caribbean</i>	<i>4.6%</i>	<i>3.8%</i>	<i>4.1%</i>	<i>9.4%</i>
Anguilla	6.4%	3.9%	4.3%	3.5%
Antigua and Barbuda	4.4%	4.3%	3.8%	8.0%
Aruba	4.4%	0.9%	2.2%	3.2%
Bahamas	4.7%	1.8%	2.9%	4.0%

	Annual average growth rate			
	1995–2000	2000–2005	1995–2005	2005–2006
Barbados	3.5%	1.5%	1.9%	3.5%
British Virgin Islands	10.8%	1.4%	5.9%	9.2%
Cayman Islands	6.1%	1.6%	3.2%	1.4%
Cuba	4.0%	4.7%	4.2%	11.8%
Dominica	2.1%	0.9%	0.7%	4.1%
Dominican Republic	8.0%	2.8%	5.4%	–
Grenada	6.6%	0.6%	3.3%	2.1%
Haiti	2.1%	-0.8%	0.6%	2.2%
Jamaica	-0.2%	1.4%	0.7%	2.7%
Montserrat	-13.4%	0.4%	-6.1%	-0.7%
Netherlands Antilles	-1.1%	1.0%	-0.3%	0.9%
Saint Kitts and Nevis	4.2%	2.8%	3.2%	4.6%
Saint Lucia	2.3%	2.6%	1.5%	4.2%
Saint Vincent and the Grenadines	3.6%	3.7%	3.3%	4.1%
Trinidad and Tobago	7.7%	7.9%	7.7%	12.0%
Turks and Caicos Islands	8.5%	8.2%	7.6%	13.9%
<i>Central America</i>	5.3%	2.0%	3.4%	5.0%
Belize	4.1%	5.6%	5.1%	5.0%
Costa Rica	5.7%	4.0%	4.4%	7.9%
El Salvador	3.3%	1.9%	2.5%	4.2%
Guatemala	4.1%	2.5%	3.2%	4.6%
Honduras	2.8%	3.6%	3.1%	5.5%
Mexico	5.4%	1.9%	3.4%	4.8%
Nicaragua	5.0%	3.0%	3.8%	3.7%
Panama	5.0%	4.2%	4.0%	8.1%
<i>South America</i>	2.0%	2.5%	1.8%	5.5%
Argentina	2.7%	2.2%	0.7%	8.5%
Bolivia	3.5%	2.7%	2.8%	4.5%
Brazil	2.0%	2.3%	2.1%	3.7%
Chile	3.8%	4.2%	3.6%	4.0%
Colombia	0.6%	3.2%	1.7%	6.8%
Ecuador	0.7%	4.5%	2.5%	4.2%
Guyana	2.5%	0.3%	1.2%	4.8%
Paraguay	0.1%	2.6%	0.8%	4.0%
Peru	2.3%	4.0%	2.8%	8.0%
Suriname	2.0%	5.0%	3.2%	5.8%
Uruguay	2.2%	0.9%	0.1%	7.0%
Venezuela (Bolivarian Republic of)	0.6%	1.3%	0.4%	10.3%
Developing economies: Asia	4.9%	6.3%	5.5%	7.6%
<i>Eastern Asia</i>	6.2%	7.1%	6.6%	8.4%
China	8.5%	9.6%	8.8%	10.7%
China, Hong Kong SAR	2.6%	3.8%	3.3%	6.8%
China, Macao SAR	-1.1%	12.9%	5.3%	2.5%
China, Taiwan Province of	5.6%	3.4%	4.1%	4.6%
Korea, Dem. People's Republic of	-0.7%	1.4%	1.0%	0.9%
Korea, Republic of	3.5%	4.6%	4.5%	5.0%
Mongolia	3.0%	5.9%	3.8%	8.4%
<i>Southern Asia</i>	5.0%	6.5%	5.5%	8.1%
Afghanistan	-0.9%	13.3%	1.1%	8.0%
Bangladesh	5.3%	5.5%	5.3%	6.7%
Bhutan	6.4%	7.9%	7.5%	13.7%
India	5.8%	6.7%	5.9%	9.2%
Iran (Islamic Republic of)	3.2%	6.9%	5.2%	5.3%
Maldives	8.7%	6.3%	6.9%	16.1%
Nepal	4.6%	2.6%	3.8%	1.9%
Pakistan	3.0%	4.8%	3.6%	6.2%
Sri Lanka	5.1%	4.3%	4.2%	7.5%

	Annual average growth rate			
	1995–2000	2000–2005	1995–2005	2005–2006
<i>South-Eastern Asia</i>	1.4%	5.0%	3.3%	5.9%
Brunei Darussalam	0.9%	2.9%	2.1%	3.8%
Cambodia	7.3%	6.5%	7.1%	9.5%
Indonesia	-0.6%	4.7%	2.2%	5.5%
Lao People's Dem. Rep.	6.1%	6.3%	6.1%	7.6%
Malaysia	3.7%	4.8%	4.1%	–
Myanmar	8.1%	9.6%	9.8%	7.0%
Philippines	3.3%	4.7%	3.9%	5.4%
Singapore	5.7%	4.2%	4.6%	7.9%
Thailand	-0.7%	5.4%	2.5%	5.0%
Timor-Leste	-6.1%	-0.2%	-2.4%	-1.6%
Viet Nam	6.7%	7.5%	6.9%	8.2%
<i>Western Asia</i>	4.0%	4.4%	3.6%	5.6%
Bahrain	3.4%	5.9%	4.8%	7.7%
Iraq	17.5%	-6.5%	3.8%	2.6%
Jordan	3.2%	5.6%	4.4%	6.0%
Kuwait	0.2%	6.5%	3.1%	5.0%
Lebanon	2.5%	2.2%	2.1%	0.0%
Palestinian territory	7.4%	1.4%	2.5%	4.9%
Oman	3.2%	4.0%	3.8%	5.9%
Qatar	9.9%	7.5%	8.0%	8.8%
Saudi Arabia	2.3%	4.1%	2.8%	4.6%
Syrian Arab Republic	3.5%	3.3%	3.1%	3.0%
Turkey	3.4%	5.2%	3.2%	5.5%
United Arab Emirates	5.9%	6.4%	6.1%	9.7%
Yemen	6.5%	3.9%	5.3%	3.8%
<i>Developing economies: Oceania</i>	2.2%	2.3%	2.3%	2.9%
<i>Melanesia</i>	1.9%	1.9%	1.9%	2.8%
<i>Micronesia</i>	-1.6%	1.5%	0.2%	1.7%
<i>Polynesia</i>	3.4%	3.5%	3.5%	3.2%
Cook Islands	1.7%	4.4%	4.1%	-1.0%
Fiji	2.2%	2.6%	2.3%	3.2%
French Polynesia	3.5%	3.5%	3.5%	3.4%
Kiribati	2.1%	2.5%	1.2%	5.8%
Marshall Islands	-4.0%	1.7%	-0.8%	0.8%
Micronesia (Federated States of)	-2.1%	1.1%	0.2%	1.4%
Nauru	-3.7%	0.3%	-1.2%	0.0%
New Caledonia	0.2%	0.3%	0.4%	0.2%
Palau, Pacific Islands (former)	1.2%	2.0%	1.3%	2.0%
Papua New Guinea	2.8%	2.5%	2.8%	3.7%
Samoa	3.1%	3.2%	3.5%	2.3%
Solomon Islands	-1.9%	1.3%	-2.3%	4.8%
Tonga	1.7%	2.4%	2.4%	1.9%
Tuvalu	3.6%	5.9%	3.8%	4.8%
Vanuatu	2.8%	0.1%	0.7%	5.5%
ECONOMIES IN TRANSITION	1.4%	6.2%	4.3%	7.1%
<i>Economies in transition: Asia</i>	3.7%	8.4%	6.3%	11.5%
Armenia	5.0%	12.3%	8.5%	13.4%
Azerbaijan	9.5%	12.4%	10.7%	31.0%
Georgia	5.6%	7.5%	5.7%	9.0%
Kazakhstan	1.9%	10.1%	6.8%	10.6%
Kyrgyzstan	5.4%	4.0%	4.6%	2.7%
Tajikistan	1.1%	9.7%	6.3%	7.0%
Turkmenistan	4.3%	4.0%	4.6%	9.0%
Uzbekistan	4.1%	5.2%	4.5%	7.2%

	Annual average growth rate			
	1995–2000	2000–2005	1995–2005	2005–2006
<i>Economies in transition: Europe</i>	1.2%	6.0%	4.1%	6.7%
Albania	4.6%	5.8%	5.8%	5.0%
Belarus	6.7%	7.5%	6.6%	9.9%
Bosnia and Herzegovina	22.3%	1.9%	9.5%	6.0%
Bulgaria	-0.4%	5.0%	2.9%	6.2%
Croatia	3.2%	4.3%	3.6%	–
Moldova	-2.7%	7.1%	2.4%	4.0%
Romania	-2.1%	5.8%	2.1%	7.7%
Russian Federation	1.2%	6.2%	4.4%	6.7%
Serbia and Montenegro	-2.0%	4.9%	0.9%	5.4%
The Former Yugoslav Republic of Macedonia	3.0%	1.2%	1.8%	4.0%
Ukraine	-1.9%	8.1%	3.8%	7.1%

Source: UNCTAD secretariat calculations, based on data from UN DESA Statistics Division; and IMF, *World Economic Outlook*.

Table 2
Current account

	Current account as percentage of GDP											
	1995	1996	1997	1998	1999	2000	2001	2002	2003	2004	2005	2006
WORLD	-0.2	-0.2	0.0	-0.3	-0.4	-0.6	-0.5	-0.5	-0.2	-0.1	-0.1	0.0
DEVELOPED ECONOMIES	0.2	0.1	0.2	-0.3	-0.8	-1.3	-1.1	-1.2	-1.1	-1.2	-1.7	-2.0
G7	0.0	-0.1	0.0	-0.3	-1.0	-1.6	-1.4	-1.5	-1.6	-1.6	-2.2	-2.4
Canada	-0.8	0.6	-1.3	-1.3	0.3	2.8	2.3	1.7	1.2	2.2	2.3	1.7
France	1.1	1.5	2.7	2.6	2.9	1.4	1.6	1.0	0.4	-0.3	-1.6	-2.1
Germany	-1.2	-0.6	-0.5	-0.7	-1.3	-1.7	0.0	2.0	1.9	4.3	4.6	5.0
Italy	2.2	2.9	2.6	1.5	0.5	-0.6	-0.1	-0.7	-1.3	-0.9	-1.6	-2.3
Japan	2.1	1.4	2.3	3.1	2.6	2.6	2.1	2.9	3.2	3.8	3.6	3.9
United Kingdom	-1.2	-0.9	-0.1	-0.4	-2.4	-2.6	-2.2	-1.6	-1.4	-1.7	-2.4	-3.0
United States	-1.5	-1.6	-1.7	-2.4	-3.2	-4.2	-3.8	-4.5	-4.8	-5.7	-6.3	-6.4
Developed economies less G7	1.3	1.0	1.2	0.1	0.1	0.2	0.5	0.6	1.0	0.7	0.1	-0.2
Austria	-2.6	-2.3	-3.1	-2.4	-3.2	-2.6	-1.9	0.3	-0.2	0.2	1.2	1.8
Australia	-5.0	-3.6	-2.8	-4.7	-5.1	-3.7	-1.9	-3.7	-5.2	-5.9	-5.8	-5.4
Belgium	–	–	–	–	–	–	–	4.7	4.1	3.5	2.5	2.5
Belgium-Luxembourg	5.9	5.5	5.9	5.4	8.1	4.8	3.8	–	–	–	–	–
Cyprus	-2.2	-5.1	-4.8	3.1	-1.8	-5.4	-3.3	-3.8	-2.2	-5.1	-5.7	-6.2
Czech Republic	-2.5	-6.7	-6.4	-2.2	-2.5	-4.8	-5.4	-5.8	-6.4	-6.0	-2.6	-4.2
Denmark	0.7	1.4	0.6	-0.9	1.9	1.4	3.1	2.5	3.4	3.1	3.6	2.0
Estonia	-3.6	-8.6	-11.4	-8.7	-4.4	-5.6	-5.4	-11.0	-12.1	-13.0	-11.3	-14.8
Finland	4.1	4.0	5.5	5.6	6.0	8.8	9.9	9.5	6.6	7.9	5.0	5.6
Greece	-1.0	-2.6	-2.5	-4.8	-6.7	-8.6	-8.0	-7.1	-7.1	-6.4	-8.1	-12.2
Hungary	-3.6	-3.9	-4.4	-7.2	-7.8	-8.5	-6.1	-7.1	-8.1	-8.5	-6.8	-7.0
Iceland	0.7	-1.8	-1.8	-6.8	-6.8	-10.3	-4.4	1.6	-4.8	-9.9	-16.6	-26.7
Ireland	3.0	3.4	3.2	0.8	0.2	-0.4	-0.6	-1.0	0.0	-0.6	-2.6	-4.1
Israel	-5.3	-5.1	-3.5	-1.3	-1.4	-1.0	-0.6	-0.5	1.6	2.6	2.9	5.2
Latvia	-0.3	-3.8	-4.7	-9.0	-9.0	-4.9	-7.6	-6.7	-8.3	-13.0	-13.2	-22.1
Lithuania	-10.7	-5.0	-7.9	-11.7	-11.0	-5.9	-4.7	-5.2	-6.9	-7.7	-7.4	-12.6
Luxembourg	–	–	–	–	–	–	–	11.7	7.5	11.8	11.8	11.8
Malta	-11.1	-11.9	-6.3	-6.1	-3.5	-13.4	-4.8	1.5	-4.8	-8.3	-10.7	-11.4
Netherlands	6.0	5.0	6.4	3.2	3.8	1.9	2.4	2.5	5.5	8.9	6.4	7.2
New Zealand	-4.9	-5.7	-6.3	-3.8	-6.1	-5.1	-2.7	-4.0	-4.4	-6.6	-8.9	-8.7
Norway	3.6	6.9	6.3	-0.3	5.6	15.2	16.2	12.7	12.4	12.9	15.8	16.4
Poland	0.6	-2.1	-3.7	-4.1	-7.6	-6.0	-2.9	-2.6	-2.2	-4.4	-1.8	-2.2
Portugal	-0.1	-3.5	-5.8	-7.1	-8.5	-10.3	-9.9	-8.1	-6.2	-7.8	-9.8	-9.5
Slovakia	2.0	-10.1	-9.2	-9.6	-4.8	-3.3	-8.3	-8.1	-1.1	-3.7	-8.8	-8.2
Slovenia	-1.5	0.3	0.3	-0.7	-4.1	-3.3	0.2	1.1	-0.8	-2.8	-2.0	-2.3
Spain	0.0	-0.2	-0.1	-1.2	-2.9	-4.0	-3.9	-3.3	-3.5	-5.3	-7.4	-8.8
Sweden	3.4	3.5	4.1	3.9	4.2	4.1	4.4	5.1	7.4	6.8	7.1	7.4
Switzerland	6.8	7.2	9.6	9.6	11.0	12.3	7.9	8.2	13.2	13.9	16.6	18.5
DEVELOPING ECONOMIES	-1.6	-1.1	-0.7	-0.3	0.6	1.5	1.2	1.9	3.0	3.3	4.7	5.2
Developing economies less China	-1.8	-1.4	-1.5	-1.0	0.4	1.4	1.1	1.7	3.0	3.1	3.8	3.9
Developing economies: Africa	-2.5	-0.7	-0.6	-3.9	-2.1	2.9	0.8	-1.1	0.7	1.4	3.7	4.2
<i>Eastern Africa</i>	<i>-4.9</i>	<i>-3.4</i>	<i>-5.2</i>	<i>-6.8</i>	<i>-6.7</i>	<i>-5.3</i>	<i>-4.8</i>	<i>-4.7</i>	<i>-4.2</i>	<i>-4.4</i>	<i>-6.6</i>	<i>-6.3</i>
Burundi	1.1	-5.1	-0.1	-6.5	-4.9	-8.6	-4.7	-3.5	-4.5	-7.9	-9.8	-13.0
Comoros	-14.2	-12.6	-19.8	-8.4	-6.7	2.0	3.2	-1.6	-3.1	-2.7	-3.4	-5.6

Current account as percentage of GDP

	1995	1996	1997	1998	1999	2000	2001	2002	2003	2004	2005	2006
Djibouti	-2.7	-3.8	-5.9	-8.0	-4.3	-9.8	-3.5	-1.5	3.4	-1.4	1.1	-8.9
Eritrea	3.0	-7.1	1.9	-23.7	-17.9	0.5	4.2	7.5	6.1	3.9	0.4	-1.8
Ethiopia	3.5	1.1	-3.1	-1.7	-8.3	-5.2	-3.7	-5.7	-2.7	-6.2	-10.5	-14.2
Kenya	-4.3	-1.6	-3.4	-3.9	-1.8	-2.2	-3.1	2.2	-0.2	-1.4	-3.0	-3.3
Madagascar	-9.7	-5.0	-5.5	-7.5	-5.6	-5.6	-1.3	-6.2	-4.9	-9.1	-10.6	-9.1
Malawi	-10.0	-10.9	-17.6	-0.4	-8.3	-5.3	-6.8	-17.2	-7.9	-10.1	-15.7	-6.9
Mauritius	-4.9	-0.5	0.4	-2.8	-1.5	-1.5	3.4	5.4	2.2	0.8	-3.4	-5.2
Mozambique	-21.7	-17.7	-12.5	-14.4	-22.1	-17.7	-19.4	-19.3	-15.1	-8.6	-10.9	-10.4
Rwanda	-3.1	-6.7	-9.4	-9.5	-7.8	-5.2	-6.0	-7.0	-7.8	-3.0	-3.3	-8.2
Seychelles	-8.7	-13.2	-10.7	-16.4	-19.9	-7.3	-23.5	-16.3	6.4	-0.3	-31.5	-23.7
Uganda	-1.2	-6.6	-3.8	-7.8	-9.4	-7.3	-3.8	-4.8	-5.6	-1.0	-2.0	-3.9
United Republic of Tanzania	-13.2	-2.2	-5.1	-10.7	-9.7	-5.2	-4.9	-6.7	-4.6	-3.8	-5.0	-8.3
Zambia	-4.2	-3.7	-6.1	-16.7	-13.7	-18.2	-19.9	-15.7	-14.9	-11.8	-10.0	-0.4
Zimbabwe	-2.8	-1.1	-8.0	-4.7	2.5	0.6	-0.7	-3.2	-6.2	-12.8	-23.3	-8.1
<i>Middle Africa</i>	-4.5	-3.7	-4.4	-12.9	-8.2	3.6	-8.4	-7.5	-6.0	-1.3	5.4	6.5
Angola	-11.3	-4.5	-11.5	-28.8	-27.5	8.7	-14.8	-2.8	-5.2	3.5	14.3	11.2
Cameroon	-0.8	-3.9	-2.8	-2.3	-3.7	-1.5	-3.5	-5.1	-1.8	-3.8	-3.4	-0.5
Central African Republic	-7.8	-3.5	-3.2	-6.4	-1.7	-3.2	-2.6	-3.6	-5.0	-4.7	-2.9	-3.4
Chad	-8.4	-9.8	-11.5	-8.3	-11.6	-15.4	-33.9	-101.3	-47.4	-4.8	1.3	2.2
Congo	-38.9	-33.0	-13.0	-20.6	-17.2	7.9	-5.6	0.6	1.0	1.9	11.8	18.9
Dem. Rep. of the Congo	0.3	-0.6	-3.4	-6.9	-2.0	-3.8	-4.8	-3.2	-1.8	-3.3	-9.8	-7.4
Equatorial Guinea	-73.9	-125.7	-26.4	-89.3	-29.8	-15.9	-46.7	-12.9	-39.1	-25.2	-15.9	-6.5
Gabon	9.4	15.6	10.0	-13.8	8.5	20.0	11.3	7.1	9.7	9.1	20.5	19.7
Sao Tome and Principe	-59.4	-53.5	-31.9	-29.4	-25.6	-30.2	-25.1	-24.3	-22.0	-23.3	-30.3	-61.4
<i>Northern Africa</i>	-1.6	0.3	1.9	-2.7	0.3	6.5	4.1	2.0	6.1	7.1	11.3	12.2
Algeria	-5.3	2.7	7.2	-1.9	0.0	16.7	12.8	7.7	12.9	13.1	20.7	24.4
Egypt	0.6	-0.2	0.1	-2.7	-1.8	-1.2	0.0	0.7	2.5	4.1	2.9	0.7
Libyan Arab Jamahiriya	7.8	5.3	9.3	-1.2	15.6	33.9	15.0	3.4	22.2	26.4	46.6	54.4
Morocco	-3.6	0.1	-0.3	-0.4	-0.5	-1.4	4.8	4.1	3.6	1.9	1.7	3.9
Sudan	-10.6	-16.5	-14.3	-17.5	-17.6	-15.9	-16.2	-10.1	-8.5	-7.1	-11.8	-16.3
Tunisia	-4.3	-2.4	-3.1	-3.4	-2.1	-4.2	-4.2	-3.5	-2.9	-2.0	-1.0	-2.8
<i>Southern Africa</i>	-1.5	-0.9	-1.1	-1.7	0.0	0.4	0.6	1.0	-0.6	-2.6	-2.8	-5.0
Botswana	6.6	11.6	14.9	4.3	13.3	11.2	12.2	3.9	6.3	3.4	17.7	17.2
Lesotho	-35.7	-30.2	-30.6	-24.6	-22.8	-18.3	-13.1	-19.9	-11.5	-3.2	-3.4	7.6
Namibia	5.0	3.9	1.7	2.4	6.9	10.5	1.6	4.4	5.1	9.3	7.1	16.1
South Africa	-1.7	-1.2	-1.5	-1.8	-0.5	-0.1	0.3	0.8	-1.1	-3.2	-3.8	-6.5
Swaziland	-2.2	-3.9	-0.2	-7.0	-2.5	-5.4	-4.5	4.9	6.5	3.1	1.6	0.7
<i>Western Africa</i>	-4.1	0.0	-1.0	-5.4	-6.2	2.6	0.0	-5.6	-2.6	0.5	2.5	4.8
Benin	-6.1	-3.9	-7.0	-5.4	-7.3	-7.8	-6.4	-8.5	-8.4	-7.2	-6.2	-6.4
Burkina Faso	-3.5	-7.3	-7.4	-6.2	-10.6	-13.3	-12.0	-10.9	-9.4	-10.9	-12.2	-10.8
Cape Verde	-11.0	-6.9	-6.1	-11.0	-13.7	-10.9	-10.7	-11.1	-11.2	-14.2	-3.3	-4.4
Côte d'Ivoire	-5.2	-2.0	-1.8	-2.7	-1.4	-2.7	-0.6	6.6	2.1	1.5	-0.1	1.2
Gambia	-4.2	-13.5	-3.7	-2.4	-2.8	-3.1	-2.6	-2.7	-4.9	-12.3	-19.4	-13.8
Ghana	-2.4	-3.1	-14.4	-5.0	-11.6	-8.4	-5.3	0.5	1.7	-2.7	-7.2	-8.5
Guinea	-6.9	-8.1	-6.6	-8.2	-6.6	-6.4	-2.7	-4.5	-3.6	-5.6	-4.3	-3.9
Guinea-Bissau	-19.0	-17.8	-9.7	-14.0	-13.4	-5.6	-22.1	-10.8	-2.9	2.9	-3.7	-5.7
Liberia	-	-	-	-	-	-16.4	-14.2	3.4	-10.8	-2.6	-1.4	-10.2
Mali	-1.7	-9.4	-6.6	-6.7	-8.5	-10.0	-10.4	-3.1	-6.4	-8.6	-9.3	-7.7
Mauritania	0.7	-0.3	-3.0	-1.8	-3.1	-10.6	-13.6	3.6	-14.8	-38.3	-52.5	-1.5

Current account as percentage of GDP

	1995	1996	1997	1998	1999	2000	2001	2002	2003	2004	2005	2006
Niger	-8.9	-5.8	-7.8	-7.2	-6.9	-6.7	-5.1	-6.9	-6.1	-7.5	-7.8	-7.9
Nigeria	-3.4	4.3	3.7	-5.8	-6.0	7.9	3.4	-8.2	-2.0	4.4	8.0	10.6
Senegal	-5.3	-4.3	-4.2	-4.2	-5.2	-7.0	-4.6	-6.0	-6.6	-6.4	-8.4	-12.5
Sierra Leone	-9.4	-12.5	-0.5	-2.5	-10.9	-15.9	-14.8	-4.4	-7.0	-4.9	-8.0	-5.2
Togo	-5.7	-9.1	-15.0	-9.9	-8.1	-11.6	-12.7	-8.9	-8.5	-8.9	-10.7	-11.7
Developing economies: America	-2.2	-2.1	-3.3	-4.4	-3.1	-2.4	-2.8	-0.9	0.4	1.0	1.4	1.7
<i>Caribbean</i>	<i>-0.6</i>	<i>-1.4</i>	<i>-2.9</i>	<i>-3.3</i>	<i>-1.8</i>	<i>-2.1</i>	<i>-2.5</i>	<i>-2.7</i>	<i>0.0</i>	<i>0.9</i>	<i>0.4</i>	<i>1.4</i>
Antigua and Barbuda	-4.7	-18.9	-8.1	-6.1	-3.1	-3.3	-8.2	-10.9	-13.4	-9.5	-14.8	-20.6
Bahamas	-4.3	-7.5	-17.3	-23.3	-5.1	-10.4	-11.6	-7.8	-8.6	-5.4	-8.8	-10.9
Barbados	2.4	3.6	-2.2	-2.6	-5.9	-5.7	-4.3	-6.8	-6.3	-12.4	-12.9	-8.9
Dominica	-18.7	-20.7	-16.3	-8.5	-17.2	-19.7	-18.7	-13.9	-13.2	-17.3	-27.6	-21.5
Dominican Republic	-1.5	-1.6	-1.1	-2.1	-2.5	-5.1	-3.5	-3.7	6.1	6.0	-1.5	-2.4
Grenada	-9.0	-19.5	-24.3	-23.5	-14.2	-21.5	-26.6	-31.9	-32.5	-12.4	-28.2	-26.8
Haiti	-1.0	-1.4	-0.5	0.3	-0.7	-1.1	-1.9	-1.4	-1.6	-1.3	0.7	1.4
Jamaica	-3.9	-4.1	-3.3	-2.2	-3.7	-4.6	-10.4	-9.8	-9.0	-5.8	-10.5	-10.0
Saint Kitts and Nevis	-19.6	-28.5	-23.3	-16.3	-22.3	-21.0	-32.1	-38.5	-34.5	-25.2	-24.9	-27.4
Saint Lucia	-4.7	-9.9	-13.0	-9.1	-16.0	-13.7	-15.8	-14.9	-19.8	-12.7	-24.2	-16.4
Saint Vincent and the Grenadines	-16.3	-11.8	-28.6	-29.9	-20.6	-7.2	-10.4	-11.5	-20.8	-25.3	-24.1	-24.6
Trinidad and Tobago	5.5	1.8	-10.7	-10.7	0.5	6.6	5.9	1.6	10.1	12.7	24.3	30.8
<i>Central America</i>	<i>-1.2</i>	<i>-1.2</i>	<i>-2.2</i>	<i>-4.0</i>	<i>-3.3</i>	<i>-3.5</i>	<i>-3.1</i>	<i>-2.5</i>	<i>-1.8</i>	<i>-1.5</i>	<i>-1.1</i>	<i>-0.7</i>
Belize	-1.6	-1.1	-3.5	-6.0	-10.1	-20.3	-23.0	-20.4	-18.4	-14.7	-14.4	-8.5
Costa Rica	-3.2	-2.3	-3.6	-3.5	-3.8	-4.3	-4.4	-5.6	-5.5	-4.3	-4.8	-4.9
El Salvador	-2.6	-2.0	-0.9	-0.8	-1.9	-3.3	-1.1	-2.8	-4.7	-4.0	-4.6	-4.8
Guatemala	-4.1	-2.8	-3.5	-5.3	-5.5	-5.4	-6.0	-5.3	-4.2	-4.5	-4.4	-4.4
Honduras	-3.6	-3.8	-3.1	-2.4	-4.4	-4.0	-4.0	-3.1	-3.9	-5.8	-0.4	-1.2
Mexico	-0.6	-0.8	-1.9	-3.8	-2.9	-3.2	-2.8	-2.2	-1.4	-1.0	-0.6	-0.2
Nicaragua	-24.5	-24.9	-24.9	-19.3	-24.9	-20.3	-19.3	-17.7	-15.7	-13.9	-14.2	-14.2
Panama	-5.1	-2.1	-5.0	-9.3	-10.1	-5.9	-1.5	-0.7	-4.5	-7.5	-5.1	-4.3
<i>South America</i>	<i>-2.5</i>	<i>-2.4</i>	<i>-3.6</i>	<i>-4.6</i>	<i>-3.1</i>	<i>-1.8</i>	<i>-2.6</i>	<i>0.5</i>	<i>2.1</i>	<i>2.6</i>	<i>2.9</i>	<i>3.0</i>
Argentina	-2.0	-2.5	-4.1	-4.8	-4.2	-3.1	-1.4	8.5	6.2	2.1	1.9	2.4
Bolivia	-5.0	-4.5	-7.0	-7.8	-5.9	-5.3	-3.4	-4.1	1.1	3.8	6.4	10.9
Brazil	-2.6	-3.0	-3.8	-4.2	-4.7	-4.0	-4.6	-1.7	0.8	1.9	1.8	1.4
Chile	-1.9	-4.1	-4.4	-4.9	0.1	-1.2	-1.6	-0.9	-1.3	1.7	0.6	4.1
Colombia	-5.0	-4.8	-5.4	-4.9	0.8	0.9	-1.3	-1.7	-1.2	-1.0	-1.6	-2.2
Ecuador	-3.6	-0.7	-3.0	-9.3	4.6	5.3	-3.2	-4.8	-0.6	-0.9	1.9	5.0
Guyana	-18.2	-7.7	-14.1	-13.8	-11.4	-15.3	-18.7	-15.1	-12.0	-8.9	-19.8	-29.2
Paraguay	-1.0	-3.7	-7.4	-2.0	-2.3	-2.3	-4.1	1.8	2.3	2.0	-0.3	-1.5
Peru	-7.7	-6.1	-5.1	-6.4	-3.4	-2.8	-2.1	-1.9	-1.5	0.0	1.3	2.7
Suriname	6.7	-1.3	-7.7	-16.8	-22.2	-4.4	-17.5	-6.3	-12.2	-4.7	-12.8	5.9
Uruguay	-1.1	-1.1	-1.3	-2.1	-2.4	-2.8	-2.9	3.1	-0.5	0.3	0.0	-2.4
Venezuela (Bolivarian Republic of)	2.9	13.2	4.3	-4.9	2.2	10.1	1.6	8.2	14.1	14.1	19.3	16.2
Developing economies: Asia	-1.1	-0.7	0.6	2.7	2.9	3.3	3.1	3.4	4.3	4.4	6.1	6.7
<i>Eastern Asia</i>	<i>-0.6</i>	<i>-0.5</i>	<i>1.5</i>	<i>4.4</i>	<i>3.0</i>	<i>2.3</i>	<i>2.5</i>	<i>3.4</i>	<i>4.0</i>	<i>4.5</i>	<i>6.4</i>	<i>7.7</i>
China	0.2	0.9	4.1	3.3	1.6	1.9	1.5	2.7	3.1	4.0	8.1	10.3
China, Hong Kong SAR	-6.3	-2.5	-4.4	1.5	6.3	4.1	5.9	7.6	10.4	9.5	11.7	10.5
China, Taiwan Province of	2.0	3.8	2.4	1.2	2.7	2.8	6.3	8.7	9.8	5.7	4.6	7.1
Korea, Republic of	-1.7	-4.1	-1.6	11.7	5.5	2.4	1.7	1.0	2.0	4.1	1.9	0.7
Mongolia	2.1	-3.1	7.2	-7.8	-6.6	-5.7	-7.6	-9.7	-7.8	1.7	1.6	6.9
<i>Southern Asia</i>	<i>-1.0</i>	<i>-1.1</i>	<i>-0.8</i>	<i>-1.7</i>	<i>0.1</i>	<i>0.8</i>	<i>1.0</i>	<i>1.7</i>	<i>1.5</i>	<i>0.3</i>	<i>0.4</i>	<i>-0.8</i>
Afghanistan	-	-	-	-	-	-	-	-3.4	3.0	2.0	0.6	-1.9
Bangladesh	-2.2	-2.3	-1.5	-1.0	-0.8	-1.4	-0.8	0.3	-0.4	-1.1	-0.2	0.9

Current account as percentage of GDP

	1995	1996	1997	1998	1999	2000	2001	2002	2003	2004	2005	2006
Bhutan	3.4	14.5	5.0	10.6	2.2	-9.6	-5.3	-8.9	-10.8	-27.3	-3.1	-0.5
India	-1.5	-1.6	-0.7	-1.6	-0.7	-1.0	0.3	1.4	1.5	0.1	-0.9	-2.1
Iran (Islamic Republic of)	2.9	4.3	2.0	-1.9	5.8	11.1	4.9	2.5	0.6	1.1	6.5	5.9
Maldives	-4.5	-1.6	-6.1	-4.1	-13.4	-8.2	-9.4	-5.6	-4.6	-17.1	-35.6	-37.7
Nepal	-2.4	-5.5	-0.8	-1.1	4.3	3.2	4.9	4.6	2.5	3.0	2.2	2.4
Pakistan	-2.9	-5.6	-5.0	-2.4	-2.6	-0.3	0.5	3.8	4.9	1.9	-1.4	-3.9
Sri Lanka	-5.9	-4.7	-2.5	-1.4	-3.5	-6.4	-1.1	-1.4	-0.4	-3.2	-2.8	-4.0
<i>South-Eastern Asia</i>	-2.5	-2.3	-0.4	9.9	7.9	6.3	5.6	5.2	6.9	5.6	5.5	7.9
Brunei Darussalam	44.4	40.0	39.3	46.6	36.8	67.5	69.0	58.1	68.1	68.2	85.0	89.1
Cambodia	-5.2	-7.2	1.1	-5.8	-5.0	-2.8	-1.2	-2.5	-3.9	-2.5	-5.0	-5.5
Indonesia	-3.1	-2.9	-1.6	3.8	3.7	4.8	4.2	3.9	3.4	0.6	0.1	2.7
Lao People's Dem. Rep.	-7.0	-12.6	-10.6	-4.7	-4.1	-10.6	-8.3	-7.2	-8.2	-14.3	-20.1	-13.5
Malaysia	-9.7	-4.4	-5.9	13.2	15.9	9.4	8.3	8.4	12.7	12.6	15.2	15.8
Myanmar	-2.6	-6.2	-5.4	-15.6	-7.6	-1.0	-2.1	0.1	-1.0	2.5	4.5	4.6
Philippines	-2.7	-4.7	-5.3	2.3	-3.8	-3.0	-2.5	-0.5	0.4	1.9	2.0	2.9
Singapore	17.1	15.0	15.5	22.2	17.4	11.6	14.0	13.7	24.1	20.0	24.5	27.4
Thailand	-7.9	-7.9	-2.1	12.8	10.2	7.6	4.4	3.7	3.3	1.7	-4.4	1.6
Timor-Leste	-	-	-	-	2.2	-60.4	-52.7	-37.3	-25.3	30.4	82.4	114.8
Viet Nam	-12.8	-9.9	-6.2	-3.9	4.5	2.3	1.6	-1.9	-4.9	-3.4	0.4	0.3
<i>Western Asia</i>	-1.0	1.3	0.7	-3.8	0.6	6.3	5.8	3.8	6.0	8.0	12.2	11.4
Bahrain	4.1	4.3	-0.5	-12.6	-0.3	10.6	3.0	-0.4	2.3	4.0	12.0	18.1
Jordan	-3.8	-3.2	0.4	0.3	5.0	0.7	-0.1	5.6	11.6	0.0	-18.0	-16.2
Kuwait	18.9	22.6	25.9	8.5	16.8	38.9	23.9	11.2	20.4	32.6	44.1	46.9
Lebanon	-9.8	-10.1	-31.9	-29.7	-19.1	-17.4	-19.5	-14.5	-13.5	-16.2	-11.9	-6.9
Oman	-5.9	1.3	-1.2	-22.3	-2.9	15.5	9.7	6.9	3.9	1.2	8.8	8.6
Qatar	-27.3	-26.2	-25.0	-21.5	6.8	25.9	23.4	19.4	24.3	23.9	25.4	11.7
Saudi Arabia	-4.2	0.4	0.2	-9.0	0.3	7.6	5.1	6.3	13.1	20.8	28.9	27.0
Syrian Arab Republic	1.5	-1.5	2.3	0.5	1.5	5.2	5.7	7.6	5.2	3.2	0.8	-1.3
Turkey	-0.3	-1.1	-1.1	1.0	-0.7	-4.9	2.3	-0.8	-3.4	-5.2	-6.3	-8.0
United Arab Emirates	0.3	9.1	10.1	1.8	1.6	17.2	9.4	5.0	8.6	9.9	15.4	15.8
Yemen	1.9	2.0	1.1	-2.5	2.3	13.1	5.1	4.8	-0.1	1.9	1.6	3.5
<i>Developing economies: Oceania</i>	5.5	2.2	-1.7	0.4	0.3	1.3	0.9	-0.6	0.1	-2.0	-2.3	-2.1
<i>Melanesia</i>	7.9	3.1	-2.3	0.3	0.3	1.9	1.3	-1.1	0.1	-3.0	-3.2	-2.8
<i>Micronesia</i>	0.2	-1.2	2.3	3.4	1.8	-0.2	1.9	0.9	1.3	-0.3	-3.7	-3.7
<i>Polynesia</i>	-0.2	0.0	-0.3	0.1	0.1	-0.2	-0.4	0.1	-0.2	0.2	0.0	-0.6
Fiji	-1.0	3.1	1.7	-0.3	-3.7	-5.7	-3.3	-1.6	-4.6	-16.3	-15.9	-19.2
Kiribati	2.4	-13.3	25.1	36.6	17.6	-2.1	21.4	10.0	12.2	-3.0	-30.7	-30.0
Papua New Guinea	18.3	5.6	-5.4	0.9	2.6	7.8	5.8	-0.8	3.8	1.6	2.9	5.6
Samoa	5.0	4.9	-3.7	9.4	1.7	0.9	0.0	-1.1	-0.9	0.5	2.0	-5.3
Solomon Islands	3.6	3.0	-5.4	-1.4	3.7	-9.5	-10.5	-5.8	-2.3	2.9	-23.7	-22.4
Tonga	-11.6	-6.2	-1.2	-11.8	-0.7	-6.7	-10.0	4.9	-3.1	4.2	-4.7	-7.6
Vanuatu	-2.1	-2.4	-0.8	2.4	-4.8	2.0	2.1	-9.4	-10.9	-7.7	-11.3	-9.0
ECONOMIES IN TRANSITION	0.2	0.2	-1.8	-2.7	5.1	10.1	5.4	4.1	3.6	5.0	5.7	4.8
<i>Economies in transition: Asia</i>	-1.9	-7.7	-7.3	-9.3	-4.4	0.9	-3.5	-2.9	-2.7	-2.1	1.6	5.0
Armenia	-16.9	-18.2	-18.7	-22.1	-16.6	-14.5	-9.4	-6.2	-6.8	-4.6	-4.0	-5.1
Azerbaijan	-10.3	-25.9	-23.1	-30.7	-13.1	-3.5	-0.9	-12.3	-27.8	-29.8	1.3	15.7
Georgia	-12.8	-12.5	-13.1	-12.8	-10.0	-7.9	-6.4	-5.9	-7.3	-8.2	-5.3	-9.3
Kazakhstan	-1.0	-3.5	-3.5	-5.4	-0.2	3.0	-5.4	-4.2	-0.9	0.8	-1.3	-1.4
Kyrgyzstan	-16.0	-23.0	-7.8	-22.2	-14.7	-4.3	-1.6	-5.2	-4.4	-3.5	-2.3	-16.9
Tajikistan	-8.3	-7.9	-4.9	-7.3	-0.9	-1.8	-4.9	-3.5	-1.3	-4.0	-2.5	-2.5
Turkmenistan	-24.5	0.1	-21.6	-32.7	-14.8	9.9	2.6	12.9	6.4	1.6	15.0	45.2
Uzbekistan	8.0	-7.0	-3.8	-0.7	-1.0	1.8	-1.2	1.2	8.7	10.1	15.7	21.4

Current account as percentage of GDP

	1995	1996	1997	1998	1999	2000	2001	2002	2003	2004	2005	2006
<i>Economies in transition: Europe</i>	0.3	0.9	-1.2	-1.9	6.5	11.2	6.4	4.8	4.2	5.7	6.1	4.8
Albania	-2.3	-5.1	-9.2	-3.2	2.2	-3.6	-3.6	-7.1	-5.1	-3.9	-6.4	-5.8
Belarus	-3.3	-3.6	-6.1	-6.7	-1.6	-3.2	-3.2	-2.1	-2.4	-5.2	1.6	-4.2
Bosnia and Herzegovina	–	–	–	-9.2	-9.7	-20.5	-23.2	-21.1	-23.0	-21.5	-23.9	-12.7
Bulgaria	-0.2	0.2	4.1	-0.5	-5.0	-5.6	-5.6	-2.4	-5.5	-5.8	-11.4	-16.1
Croatia	-7.5	-4.8	-12.4	-6.7	-7.0	-2.6	-3.7	-8.4	-6.3	-5.6	-6.7	-8.5
Moldova	-4.8	-11.3	-14.3	-19.7	-5.8	-7.6	-1.7	-4.0	-6.6	-2.0	-8.3	-8.6
Romania	-4.5	-6.7	-5.4	-7.1	-4.1	-3.7	-5.5	-3.3	-5.8	-8.4	-8.7	-10.3
Russian Federation	1.7	2.8	0.0	0.1	12.6	18.0	11.1	8.4	8.2	9.9	10.9	9.7
Serbia and Montenegro	–	–	–	-2.6	-3.7	0.3	-2.6	-7.6	-7.5	-10.4	-8.5	-12.3
The Former Yugoslav Republic of Macedonia	-6.1	-7.5	-8.0	-8.7	-2.7	-1.9	-7.2	-9.4	-3.3	-7.7	-1.4	0.4
Ukraine	-2.4	-2.7	-2.7	-3.1	5.3	4.7	3.7	7.5	5.8	10.6	3.1	-1.8

Source: UNCTAD secretariat calculations, based on data from IMF, *IFS* and *World Economic Outlook*.

Table 3

Trade in merchandise: Total exports

Grouping	Percentage of world				Millions of US dollars	Annual average growth rate		
	1995	2000	2005	2006	2006	1995-2000	2000-2006	1995-2006
WORLD	100.0	100.0	100.0	100.0	11,982,932	3.7%	12.3%	7.5%
DEVELOPED ECONOMIES	69.8	65.6	60.3	59.1	7,085,021	2.8%	10.2%	5.9%
G7	48.7	45.7	38.8	38.1	4,559,584	2.8%	8.7%	5.0%
Developed economies less G7	21.1	20.0	21.4	21.1	2,525,436	2.9%	13.3%	7.8%
<i>Developed economies: America</i>	15.0	16.4	12.1	12.0	1,442,551	5.6%	5.9%	4.5%
<i>Developed economies: Asia</i>	8.9	7.9	6.1	5.8	690,989	1.5%	7.4%	3.9%
<i>Developed economies: Europe</i>	44.5	40.1	40.8	40.1	4,805,422	2.1%	12.1%	6.7%
<i>Developed economies: Oceania</i>	1.3	1.2	1.2	1.2	146,058	1.0%	12.2%	6.3%
<i>Developed economies: Asia and Oceania</i>	10.2	9.1	7.3	7.0	837,047	1.4%	8.1%	4.3%
DEVELOPING ECONOMIES	27.6	31.7	35.9	36.8	4,408,951	5.8%	15.6%	10.2%
Developing economies less China	24.7	27.9	28.6	28.7	3,439,862	5.2%	13.3%	8.7%
<i>Developing economies: Africa</i>	2.1	2.3	2.9	2.8	332,801	3.8%	17.2%	10.3%
Developing economies: Eastern Africa	0.2	0.2	0.2	0.2	18,914	-0.7%	11.7%	5.4%
Developing economies: Middle Africa	0.2	0.3	0.5	0.5	60,985	4.7%	27.0%	15.3%
Developing economies: Northern Africa	0.7	0.8	1.1	1.0	124,934	4.7%	17.8%	11.7%
Developing economies: Southern Africa	0.5	0.5	0.6	0.5	62,275	4.1%	12.5%	7.7%
Developing economies: Western Africa	0.4	0.5	0.6	0.5	65,693	2.9%	16.3%	9.4%
Africa less South Africa	1.5	1.8	2.4	2.3	279,631	5.0%	18.3%	11.4%
Northern Africa less Sudan	0.7	0.8	1.0	1.0	119,864	4.4%	17.6%	11.4%
Sub-Saharan Africa	1.4	1.5	1.8	1.8	212,937	3.4%	17.0%	9.8%
Sub-Saharan Africa less South Africa	0.9	1.0	1.3	1.3	159,767	5.4%	18.8%	11.5%
<i>Developing economies: America</i>	4.4	5.6	5.4	5.7	679,988	8.1%	12.0%	8.9%
Developing economies: Caribbean	0.3	0.3	0.2	0.3	30,947	6.3%	8.9%	6.9%
Developing economies: Central America	1.7	2.8	2.2	2.2	268,540	14.2%	7.3%	9.1%
Developing economies: South America	2.5	2.5	3.0	3.2	380,500	3.2%	16.7%	9.1%
Latin America	4.2	5.3	5.2	5.4	649,041	8.2%	12.2%	9.1%
South America less Brazil	1.6	1.7	1.9	2.0	243,030	3.7%	16.0%	8.6%
Central America and Greater Caribbean Islands less Puerto Rico	1.8	2.9	2.3	2.3	279,461	13.6%	7.2%	8.7%
Central America and Greater Caribbean Islands less Mexico and Puerto Rico	0.3	0.3	0.2	0.2	29,169	7.1%	5.7%	4.3%
<i>Developing economies: Asia</i>	21.0	23.8	27.6	28.3	3,389,475	5.5%	16.2%	10.5%
Developing economies: Eastern Asia	10.9	12.0	14.7	15.4	1,847,814	5.4%	17.6%	11.1%
Developing economies: Southern Asia	1.3	1.4	1.8	1.9	222,570	5.2%	17.8%	11.4%
Developing economies: South-Eastern Asia	6.2	6.7	6.2	6.3	759,071	4.5%	11.6%	7.4%
Developing economies: Western Asia	2.6	3.7	4.8	4.7	560,020	7.9%	18.5%	13.5%
Eastern, Southern and South-Eastern Asia	18.4	20.1	22.8	23.6	2,829,455	5.1%	15.8%	10.0%
Eastern and South-Eastern Asia less China	14.2	14.8	13.7	13.7	1,637,785	4.0%	11.2%	7.0%
Southern Asia less India	0.7	0.8	0.9	0.8	101,683	5.1%	15.1%	10.1%
<i>Developing economies: Oceania</i>	0.1	0.1	0.1	0.1	6,688	-3.7%	11.2%	2.9%

Grouping	Percentage of world				Millions of US dollars	Annual average growth rate		
	1995	2000	2005	2006	2006	1995-2000	2000-2006	1995-2006
Least developed countries (LDCs)	0.5	0.6	0.8	0.8	99,227	6.6%	19.6%	13.1%
Developing economies less LDCs	27.1	31.2	35.1	36.0	4,309,724	5.8%	15.5%	10.1%
Least developed countries: Africa and Haiti	0.3	0.3	0.6	0.6	68,270	4.0%	24.3%	14.0%
Least developed countries: Asia	0.2	0.2	0.2	0.3	30,443	11.3%	11.9%	11.7%
Least developed countries: Islands	0.0	0.0	0.0	0.0	514	-4.7%	13.2%	2.5%
Landlocked developing countries (LLDCs)	0.5	0.5	0.7	0.8	90,877	5.2%	20.6%	11.8%
Small island developing States (SIDS)	0.2	0.2	0.2	0.2	25,174	1.8%	14.4%	7.6%
Heavily indebted poor countries (HIPCs)	0.5	0.4	0.5	0.5	60,891	1.2%	16.1%	8.2%
High-income countries	15.3	17.3	17.2	17.2	2,059,630	5.0%	12.8%	8.4%
Middle-income countries	6.2	6.4	7.1	7.0	841,746	4.0%	14.5%	8.8%
Low-income countries	6.1	8.1	11.6	12.6	1,507,576	9.2%	21.3%	14.8%
Major petroleum exporters	4.6	6.3	7.6	7.5	898,025	6.8%	17.0%	12.1%
Major petroleum exporters: Africa	0.8	1.1	1.5	1.4	173,739	5.7%	20.4%	13.5%
Major petroleum exporters: America	0.4	0.6	0.6	0.7	80,654	6.4%	15.4%	10.6%
Major petroleum exporters: Asia	3.4	4.6	5.5	5.4	643,632	7.1%	16.4%	12.0%
Non-major petroleum exporters in developing economies	22.9	25.4	28.4	29.3	3,510,927	5.5%	15.2%	9.8%
Major exporters of manufactured goods	19.4	21.8	24.5	25.4	3,040,004	5.8%	15.5%	10.1%
Major exporters of manufactured goods: America	2.4	3.4	3.2	3.2	387,762	10.8%	10.5%	9.5%
Major exporters of manufactured goods: Asia	17.0	18.4	21.3	22.1	2,652,242	5.0%	16.3%	10.1%
Non-major exporters of manufactured goods in developing economies	8.2	9.9	11.4	11.4	1,368,947	5.7%	15.9%	10.5%
Non-major petroleum and manufactured goods exporters in developing economies	3.5	3.6	3.9	3.9	470,923	3.9%	13.9%	8.1%
Emerging economies	12.6	14.0	13.3	13.6	1,625,810	5.2%	12.1%	7.9%
Emerging economies: America	3.3	4.3	4.1	4.3	516,370	9.0%	11.8%	9.3%
Emerging economies: Asia	9.4	9.7	9.2	9.3	1,109,439	3.8%	12.2%	7.3%
Newly industrialized economies	14.0	14.4	13.2	13.2	1,582,572	3.8%	11.1%	6.8%
Newly industrialized economies: 1st tier	10.2	10.2	9.6	9.5	1,143,398	3.0%	11.6%	6.7%
Newly industrialized economies: 2nd tier	3.7	4.2	3.6	3.7	439,174	5.7%	9.8%	7.0%
ECONOMIES IN TRANSITION	2.6	2.6	3.8	4.1	488,960	1.6%	21.3%	11.9%
<i>Economies in transition in Asia</i>	<i>0.2</i>	<i>0.3</i>	<i>0.4</i>	<i>0.5</i>	<i>58,973</i>	<i>4.0%</i>	<i>24.0%</i>	<i>13.8%</i>
<i>Economies in transition in Europe</i>	<i>2.4</i>	<i>2.4</i>	<i>3.4</i>	<i>3.6</i>	<i>429,986</i>	<i>1.4%</i>	<i>21.0%</i>	<i>11.7%</i>
TRADE GROUPS (1)								
<i>Africa</i>								
CEPGL	0.0	0.0	0.0	0.0	2,359	-14.0%	20.0%	3.4%
COMESA	0.3	0.4	0.5	0.6	68,407	4.1%	20.7%	11.8%
ECCAS	0.2	0.3	0.5	0.5	61,154	4.6%	26.9%	15.2%
ECOWAS	0.4	0.5	0.6	0.5	64,976	3.1%	16.3%	9.5%
MRU	0.0	0.0	0.0	0.0	1,267	-7.9%	4.8%	-2.4%
SADC	0.8	0.8	0.9	0.9	108,245	3.6%	15.8%	9.1%
CEMAC	0.1	0.1	0.2	0.2	27,637	4.1%	25.4%	14.1%
UEMOA	0.1	0.1	0.1	0.1	13,478	0.4%	13.5%	6.2%
UMA	0.6	0.7	0.9	0.9	106,828	4.3%	17.1%	11.1%

Grouping	Percentage of world				Millions of US dollars	Annual average growth rate		
	1995	2000	2005	2006	2006	1995-2000	2000-2006	1995-2006
America								
ANCOM	0.8	0.9	1.0	1.1	129,634	4.6%	16.3%	9.6%
CACM	0.2	0.2	0.1	0.1	16,685	9.0%	6.7%	5.1%
CARICOM	0.1	0.1	0.1	0.2	19,972	5.9%	16.9%	10.1%
FTAA	19.4	21.9	17.5	17.6	2,114,845	6.2%	7.6%	5.7%
LAIA	4.0	5.1	5.0	5.3	631,761	8.2%	12.4%	9.2%
MERCOSUR	1.4	1.3	1.6	1.6	190,081	2.5%	15.7%	8.5%
NAFTA	16.6	19.0	14.2	14.1	1,692,403	6.6%	6.1%	5.1%
OECS	0.0	0.0	0.0	0.0	277	2.0%	-1.7%	-0.1%
Asia								
APTA	6.0	7.4	11.1	12.0	1,435,813	7.8%	22.4%	14.8%
ASEAN	6.2	6.7	6.2	6.3	759,071	4.5%	11.6%	7.4%
ECO	1.2	1.3	1.8	1.8	220,955	4.3%	20.3%	12.3%
ASEAN plus China, Japan and Korea	20.1	20.6	22.0	22.5	2,698,871	4.1%	14.6%	8.9%
GCC	2.0	2.7	3.7	3.5	421,704	6.1%	19.2%	13.4%
SAARC	0.9	1.0	1.3	1.3	157,716	5.3%	17.5%	11.0%
Europe								
EFTA	2.4	2.2	2.2	2.2	266,742	1.6%	11.8%	6.8%
EU 25	42.1	37.9	38.6	37.9	4,538,050	2.2%	12.1%	6.7%
Euro Zone	33.3	29.4	29.9	29.0	3,480,738	1.8%	11.9%	6.6%
Oceania								
MSG	0.1	0.0	0.0	0.0	4,883	-6.1%	12.3%	2.4%
INTERREGIONAL GROUPS								
ACP	1.7	1.8	2.1	2.1	246,421	3.4%	16.2%	9.2%
APEC	45.5	48.3	44.9	45.6	5,464,719	4.7%	11.3%	7.2%
BSEC	2.8	2.8	4.0	4.2	501,379	1.7%	20.8%	11.7%
CIS	2.2	2.3	3.3	3.5	420,107	1.7%	21.4%	12.0%

Sources:

- UN, *Yearbook of International Trade Statistics*
- UN, *Monthly Bulletin of Statistics*
- UN, Economic Commission for Europe
- IMF, *International Financial Statistics*
- IMF, Direction of Trade Statistics
- World Trade Organization
- Eastern Caribbean Central Bank
- National sources and UNCTAD secretariat estimates

Notes:

(1) See end of table 4.

Table 4

Trade in services: Total exports

Grouping	Percentage of world				Millions of US dollars	Annual average growth rate		
	1995	2000	2005	2006	2006	1995-2000	2000-2006	1995-2006
WORLD	100.0	100.0	100.0	100.0	2,735,658	3.9%	11.4%	7.1%
DEVELOPED ECONOMIES	75.3	75.1	73.6	72.7	1,987,600	4.1%	10.9%	7.0%
G7	49.6	48.8	44.3	43.2	1,182,628	3.7%	9.2%	5.7%
Developed economies less G7	25.7	26.3	29.3	29.4	804,973	4.9%	13.6%	9.1%
Developed economies: America	19.7	22.0	17.3	17.3	472,843	6.3%	6.5%	5.2%
Developed economies: Asia	5.9	5.5	5.1	4.9	134,868	1.5%	10.6%	5.5%
Developed economies: Europe	48.0	46.1	49.7	49.0	1,340,828	3.6%	12.7%	7.8%
Developed economies: Oceania	1.7	1.5	1.5	1.4	39,062	0.8%	11.0%	5.7%
Developed economies: Asia and Oceania	7.6	7.0	6.6	6.4	173,929	1.3%	10.7%	5.5%
DEVELOPING ECONOMIES	23.0	23.1	23.8	24.5	669,748	3.4%	12.4%	7.2%
Developing economies less China	21.5	21.1	20.8	21.3	583,372	3.0%	11.5%	6.5%
Developing economies: Africa	2.2	2.2	2.4	2.4	65,203	3.2%	13.7%	8.1%
Developing economies: Eastern Africa	0.4	0.3	0.3	0.3	8,708	2.4%	10.1%	6.2%
Developing economies: Middle Africa	0.1	0.1	0.1	0.1	1,681	4.8%	2.3%	4.5%
Developing economies: Northern Africa	1.1	1.1	1.2	1.2	31,976	2.9%	12.9%	7.4%
Developing economies: Southern Africa	0.4	0.4	0.5	0.5	13,406	1.6%	18.6%	8.7%
Developing economies: Western Africa	0.2	0.3	0.3	0.3	9,431	8.2%	16.9%	13.4%
Africa less South Africa	1.9	1.8	2.0	2.0	53,569	3.5%	12.7%	8.0%
Northern Africa less Sudan	1.1	1.1	1.2	1.2	31,856	3.0%	12.8%	7.5%
Sub-Saharan Africa	1.1	1.1	1.2	1.2	33,346	3.4%	14.5%	8.7%
Sub-Saharan Africa less South Africa	0.7	0.7	0.8	0.8	21,713	4.3%	12.4%	8.8%
Developing economies: America	3.7	4.1	3.4	3.4	93,787	6.1%	7.9%	5.9%
Developing economies: Caribbean	0.9	1.0	0.8	0.8	21,381	7.1%	5.9%	5.4%
Developing economies: Central America	1.1	1.3	1.0	1.0	27,004	7.1%	5.9%	5.8%
Developing economies: South America	1.7	1.7	1.6	1.7	45,402	4.8%	10.3%	6.3%
Latin America	2.8	3.0	2.6	2.6	72,406	5.7%	8.5%	6.1%
South America less Brazil	1.2	1.1	0.9	0.9	25,403	2.2%	8.1%	3.6%
Central America and Greater Caribbean Islands less Puerto Rico	1.5	1.8	1.4	1.4	38,052	7.7%	5.9%	5.9%
Central America and Greater Caribbean Islands less Mexico and Puerto Rico	0.7	0.9	0.8	0.8	21,733	9.5%	7.5%	7.5%
Developing economies: Asia	17.0	16.8	17.9	18.6	509,425	2.9%	13.2%	7.4%
Developing economies: Eastern Asia	7.6	8.2	8.7	9.0	247,362	4.5%	13.1%	8.8%
Developing economies: Southern Asia	0.9	1.4	2.8	3.2	87,172	14.5%	27.0%	18.9%
Developing economies: South-Eastern Asia	5.7	4.5	4.6	4.7	128,294	-3.3%	12.4%	4.6%
Developing economies: Western Asia	2.8	2.7	1.8	1.7	46,597	5.8%	3.2%	1.1%
Eastern, Southern and South-Eastern Asia	14.2	14.1	16.1	16.9	462,828	2.3%	14.7%	8.4%
Eastern and South-Eastern Asia less China	11.7	10.7	10.3	10.6	289,280	0.2%	11.1%	5.7%
Southern Asia less India	0.4	0.4	0.6	0.5	14,429	1.5%	19.3%	11.7%
Developing economies: Oceania	0.1	0.1	0.1	0.0	1,333	-4.7%	8.0%	0.3%
Least developed countries (LDCs)	0.5	0.5	0.5	0.5	12,574	2.8%	10.1%	6.2%
Developing economies less LDCs	22.5	22.6	23.3	24.0	657,173	3.4%	12.4%	7.3%
Least developed countries: Africa and Haiti	0.3	0.3	0.3	0.3	7,546	1.6%	11.6%	7.2%
Least developed countries: Asia	0.2	0.2	0.1	0.1	3,944	3.9%	8.2%	4.6%
Least developed countries: Islands	0.0	0.0	0.0	0.0	1,084	6.2%	7.5%	5.8%
Landlocked developing countries (LLDCs)	0.4	0.4	0.5	0.5	13,871	5.7%	14.8%	9.3%
Small island developing States (SIDS)	0.6	0.6	0.5	0.5	13,533	4.1%	6.7%	4.5%
Heavily indebted poor countries (HIPCs)	0.5	0.5	0.5	0.5	12,573	3.7%	10.2%	6.7%

Grouping	Percentage of world				Millions of US dollars	Annual average growth rate		
	1995	2000	2005	2006		2006	1995-2000	2000-2006
High-income countries	10.7	10.7	10.0	10.2	279,778	3.1%	10.4%	6.6%
Middle-income countries	7.0	6.9	6.6	6.6	179,770	3.4%	10.9%	6.1%
Low-income countries	5.3	5.5	7.2	7.7	210,199	4.1%	17.3%	9.6%
Major petroleum exporters	2.4	2.2	1.9	2.0	53,385	3.4%	8.1%	4.2%
Major petroleum exporters: Africa	0.1	0.2	0.3	0.3	7,934	12.1%	16.3%	15.1%
Major petroleum exporters: America	0.3	0.2	0.2	0.2	4,503	-0.3%	4.8%	1.7%
Major petroleum exporters: Asia	2.0	1.8	1.5	1.5	40,947	3.1%	7.3%	3.2%
Non-major petroleum exporters in developing economies	20.6	20.9	21.8	22.5	616,363	3.4%	12.8%	7.5%
Major exporters of manufactures	15.3	15.7	16.8	17.5	478,496	3.4%	13.5%	7.9%
Major exporters of manufactures: America	1.3	1.5	1.3	1.3	36,317	7.8%	8.5%	7.3%
Major exporters of manufactures: Asia	14.0	14.2	15.5	16.2	442,179	3.0%	13.9%	7.9%
Non-major exporters of manufactures in developing economies	7.7	7.4	7.0	7.0	191,252	3.5%	10.0%	5.8%
Non-major petroleum and manufactures exporters in developing economies	5.3	5.2	5.1	5.0	137,867	3.5%	10.9%	6.5%
Emerging economies	9.2	9.2	8.4	8.7	237,463	2.9%	10.3%	6.2%
Emerging economies: America	2.0	2.2	1.9	1.9	53,089	6.6%	8.8%	6.5%
Emerging economies: Asia	7.3	7.0	6.5	6.7	184,374	1.8%	10.7%	6.2%
Newly industrialized economies	11.2	10.2	9.7	9.9	271,513	0.1%	10.8%	5.5%
Newly industrialized economies: 1st tier	7.9	7.8	7.4	7.6	209,108	2.6%	10.9%	6.8%
Newly industrialized economies: 2nd tier	3.3	2.4	2.3	2.3	62,406	-6.1%	10.5%	2.1%
ECONOMIES IN TRANSITION	1.7	1.8	2.6	2.9	78,311	2.2%	20.3%	11.1%
<i>Economies in transition in Asia</i>	<i>0.1</i>	<i>0.2</i>	<i>0.2</i>	<i>0.3</i>	<i>7,035</i>	<i>14.1%</i>	<i>18.2%</i>	<i>15.2%</i>
<i>Economies in transition in Europe</i>	<i>1.6</i>	<i>1.6</i>	<i>2.4</i>	<i>2.6</i>	<i>71,275</i>	<i>1.3%</i>	<i>20.5%</i>	<i>10.8%</i>
TRADE GROUPS (1)								
Africa								
CEPGL	0.0	0.0	0.0	0.0	381	-3.2%	21.0%	10.9%
COMESA	1.0	0.9	0.9	0.9	24,093	1.8%	10.8%	5.7%
ECCAS	0.1	0.1	0.1	0.1	1,866	5.2%	3.4%	5.2%
ECOWAS	0.2	0.3	0.3	0.3	9,365	8.2%	17.0%	13.5%
MRU	0.0	0.0	0.0	0.0	175	-11.2%	6.1%	-0.1%
SADC	0.7	0.6	0.7	0.7	17,914	2.0%	14.6%	7.3%
CEMAC	0.1	0.1	0.0	0.0	1,262	6.1%	1.3%	4.1%
UEMOA	0.1	0.1	0.1	0.1	2,642	-2.0%	13.9%	6.0%
UMA	0.4	0.5	0.6	0.6	15,688	4.9%	15.2%	9.9%
America								
ANCOM	0.4	0.4	0.3	0.3	8,460	0.9%	6.5%	2.7%
CACM	0.2	0.3	0.2	0.2	6,635	12.4%	8.5%	10.0%
CARICOM	0.5	0.5	0.4	0.4	10,397	5.4%	6.5%	4.7%
FTAA	23.1	25.7	20.4	20.4	559,106	6.3%	6.8%	5.3%
LAIA	2.6	2.8	2.4	2.4	65,233	5.6%	8.2%	5.7%
MERCOSUR	1.0	1.1	1.0	1.1	29,089	7.0%	11.0%	7.5%
NAFTA	20.5	22.9	17.9	17.9	489,162	6.3%	6.4%	5.2%
OECS	0.1	0.1	0.1	0.1	1,599	5.6%	4.7%	3.3%
Asia								
APTA	4.1	5.2	7.2	7.8	214,156	9.3%	19.3%	13.4%
ASEAN	5.7	4.5	4.6	4.7	128,294	-3.3%	12.4%	4.6%
ECO	1.5	1.6	1.6	1.5	40,745	6.5%	12.6%	7.2%
ASEAN plus China, Japan and Korea	14.3	13.0	13.8	14.0	382,843	0.4%	13.3%	6.7%
GCC	0.4	0.5	0.5	0.6	15,233	9.8%	12.1%	9.2%
SAARC	0.9	1.4	2.5	2.9	79,307	14.3%	26.3%	18.2%

Grouping	Percentage of world				Millions of US dollars	Annual average growth rate		
	1995	2000	2005	2006		2006	1995-2000	2000-2006
Europe								
EFTA	3.3	3.2	3.1	3.1	84,834	3.4%	11.5%	6.9%
EU 25	44.8	43.0	46.5	45.9	1,255,887	3.6%	12.7%	7.9%
Euro Zone	33.1	29.8	32.4	31.9	872,131	2.3%	12.7%	7.4%
Oceania								
MSG	0.1	0.1	0.0	0.0	1,201	-4.9%	7.5%	0.0%
INTERREGIONAL GROUPS								
ACP	1.9	2.0	2.0	1.9	53,203	4.8%	11.1%	7.3%
APEC	41.6	42.3	38.1	38.3	1,046,875	3.5%	9.4%	5.9%
BSEC	3.3	3.7	4.3	4.3	116,683	6.1%	15.0%	9.4%
CIS	1.2	1.1	1.7	1.8	49,780	-0.9%	20.1%	9.3%

Source: UNCTAD secretariat calculations based on IMF *Balance of Payments Statistics* on CD-ROM and other international and national sources.

Note:

(1) CEPGL	Economic Community of the Great Lakes Countries
COMESA	Common Market for Eastern and Southern Africa
ECCAS	Economic Community of Central African States
ECOWAS	Economic Community of West African States
MRU	Mano River Union
SADC	Southern African Development Community
CEMAC	Economic and Monetary Community of Central Africa
UEMOA	West African Economic and Monetary Union
UMA	Arab Maghreb Union
ANCOM	Andean Community
CACM	Central American Common Market
CARICOM	Caribbean Community and Common Market
FTAA	Free Trade Area of the Americas
LAIA	Latin American Integration Association
MERCOSUR	Mercado Común Sudamericano
NAFTA	North American Free Trade Agreement
OECS	Organization of Eastern Caribbean States
APTA	Asia-Pacific Trade Agreement (Former Bangkok Agreement)
ASEAN	Association of South-East Asian Nations
ECO	Economic Cooperation Organization
GCC	Gulf Cooperation Council
SAARC	South Asian Association for Regional Cooperation
EFTA	European Free Trade Association
EU	European Union
MSG	Melanesian Spearhead Group
ACP	African, Caribbean and Pacific Group of States
APEC	Asia-Pacific Economic Cooperation
BSEC	Black Sea Economic Cooperation
CIS	Commonwealth of Independent States

Table 5
Direct investment in reporting economy (FDI inward)

	<i>FDI Inward</i>										
	<i>(Per 1000 GDP)</i>										
	1995	1996	1997	1998	1999	2000	2001	2002	2003	2004	2005
WORLD	11.5	13.0	16.3	23.9	35.7	44.5	26.5	18.9	15.2	17.2	20.6
DEVELOPED ECONOMIES	9.4	10.2	12.5	22.0	35.4	46.6	25.0	17.4	12.6	12.9	16.7
G7	6.6	7.7	9.9	17.2	25.2	36.4	16.3	11.5	7.3	8.5	15.4
Developed economies less G7	24.2	22.7	26.0	47.6	90.3	106.1	74.3	48.4	37.9	32.8	22.5
DEVELOPING ECONOMIES	20.5	23.7	29.5	31.3	37.2	38.2	32.1	24.1	23.3	30.4	32.2
Developing economies less China	15.8	19.6	26.2	28.2	36.5	38.3	30.5	20.2	20.1	29.2	31.1
Developing economies: Africa	10.6	10.6	19.0	16.3	21.6	16.0	34.5	22.6	27.0	21.1	32.4
Eastern Africa	12.0	10.3	18.7	26.2	26.4	22.7	22.9	22.3	28.3	24.8	18.7
Middle Africa	12.1	2.3	6.8	50.8	96.2	35.3	101.7	79.5	128.1	72.5	59.0
Northern Africa	6.1	6.8	12.2	13.2	15.0	13.7	22.1	16.5	21.2	20.1	36.8
Southern Africa	9.5	6.9	25.1	6.0	11.8	8.8	56.5	12.1	7.1	6.6	27.6
Western Africa	22.3	29.4	30.2	21.4	25.1	20.8	20.5	27.0	26.6	22.0	25.7
Developing economies: America	17.2	24.9	36.1	41.5	57.1	48.2	40.2	30.4	24.3	41.4	36.2
Caribbean	7.4	48.1	123.3	202.6	217.6	216.2	113.6	44.6	37.7	257.1	195.8
Central America	30.6	26.6	32.5	33.7	28.9	30.1	42.0	27.5	22.5	27.9	23.9
South America	14.3	23.3	32.9	35.7	58.9	45.6	33.3	31.2	24.3	31.4	29.9
Developing economies: Asia	23.6	25.0	27.6	27.8	29.9	36.7	27.8	21.9	22.4	27.7	30.7
Eastern Asia	28.2	30.4	32.3	37.2	40.3	55.4	36.7	28.9	28.2	36.1	35.7
Southern Asia	4.4	4.9	8.1	5.8	4.6	6.5	8.7	9.4	6.8	7.0	8.0
South-Eastern Asia	41.6	40.5	48.1	46.6	51.5	39.6	34.1	24.5	27.8	32.3	42.1
Western Asia	5.6	8.3	8.0	6.9	3.3	5.6	12.8	8.9	16.4	21.0	31.8
Developing economies: Oceania	43.8	41.3	24.5	24.1	29.6	19.5	8.6	8.7	21.2	37.0	19.7
ECONOMIES IN TRANSITION	7.8	10.6	19.6	21.9	27.4	20.5	22.7	22.5	33.9	41.8	33.1
Economies in transition: Asia	35.7	43.6	59.5	57.0	50.6	38.9	71.7	83.5	96.4	107.5	41.7
Economies in transition: Europe	5.6	7.7	15.9	17.6	23.9	18.2	17.4	16.2	27.8	35.6	32.3

Source: UNCTAD secretariat calculations, based on data from UNCTAD, *World Investment Report*, and UN/DESA Statistics Division.

Table 6
Aid to GNI ratio, developing economies
(Percentage)

	1970–1979	1980–1989	1990–1999	1990–1995	1996–2000	2000–2005
DEVELOPING ECONOMIES	1.23	1.06	0.81	0.96	0.64	0.71
Developing economies: Asia	1.25	0.77	0.52	0.64	0.38	0.44
Developing economies: Africa	2.87	3.61	4.22	5.28	2.93	3.35
Developing economies: America	0.31	0.39	0.32	0.37	0.25	0.26
ECONOMIES IN TRANSITION	0.70	0.51	1.13	1.23
<i>Memo item:</i> Heavily indebted poor countries (HIPC)	5.61	8.35	10.57	12.27	8.48	9.73

Source: OECD, *Development Assistance Committee Database* online; and United Nations Statistics Division.

Table 7

**Official Development Assistance from all donors to developing countries Total,
Economies in transition; Heavily Indebted Poor Countries - Disbursements**
(Current US \$ in millions)

	1990	1995	2000	2001	2002	2003	2004	2005
Developing Countries less Economies in Transition								
Official Development Assistance	55322.9	55639.4	45887.9	47631.2	54698.2	66094.6	74957.9	101987.7
Bilateral Grants and grant-like flows	42792.5	42996.6	38086.3	39610.5	46121.7	61650.8	71626.4	96252.9
of which: Technical Co-operation	13648.6	16412.7	13504.6	14214.5	16009.7	19138.0	19487.0	20854.2
Total Development Food/Emergency aid	2531.2	4005.4	4408.6	4613.9	5375.5	7975.1	9963.4	10905.9
Debt Forgiveness Grants	2191.1	2148.6	2166.0	2758.7	4190.8	8551.1	7488.7	25266.3
Other Grants (residual)	24421.6	20430.0	18007.1	18023.4	20545.7	25986.7	34687.3	39226.4
Bilateral Loans	12530.4	12642.8	7801.6	8020.7	8576.5	4443.7	3331.5	5734.9
HIPC Countries								
Official Development Assistance	17828.7	19504.9	14646.0	16435.0	20730.3	26648.8	28462.2	29804.5
Bilateral Grants and grant-like flows	13914.5	13897.3	11138.0	12374.1	15982.5	22285.1	26227.5	26956.0
of which: Technical Co-operation	3586.2	4062.6	3089.4	3292.9	3712.2	4351.6	4575.0	5493.5
Total Development Food/Emergency aid	803.6	1488.8	1177.8	1558.6	2158.7	2914.1	3571.5	4458.1
Debt Forgiveness Grants	1994.8	1393.4	1592.5	2148.5	3712.9	7125.5	6823.2	5350.6
Other Grants (residual)	7530.0	6952.5	5278.2	5374.1	6398.7	7893.9	11257.8	11653.8
Bilateral Loans	3914.1	5607.6	3508.1	4060.9	4747.8	4363.7	2234.7	2848.6
Developing less Economies in Transition & less HIPC								
Official Development Assistance	37494.2	36134.5	31241.9	31196.2	33967.9	39445.8	46495.6	72183.2
Bilateral Grants and grant-like flows	28878.0	29099.4	26948.4	27236.4	30139.2	39365.7	45398.9	69296.9
of which: Technical Co-operation	10062.4	12350.1	10415.2	10921.6	12297.5	14786.3	14912.0	15360.7
Total Development Food/Emergency aid	1727.6	2516.6	3230.8	3055.3	3216.8	5061.0	6392.0	6447.8
Debt Forgiveness Grants	196.3	755.2	573.5	610.2	477.9	1425.6	665.4	19915.7
Other Grants (residual)	16891.6	13477.5	12728.9	12649.3	14147.0	18092.8	23429.5	27572.7
Bilateral Loans	8616.2	7035.2	4293.5	3959.8	3828.7	80.0	1096.7	2886.3
Economies in Transition								
Official Development Assistance	977.9	5547.8	7460.7	7163.5	8834.2	7577.3	8373.5	5267.5
Bilateral Grants and grant-like flows	195.7	4495.1	6178.6	5985.5	7808.5	6542.0	7216.8	4558.1
of which: Technical Co-operation	170.5	1390.1	1990.2	2443.5	3320.9	3020.8	2946.8	1859.7
Total Development Food/Emergency aid	0.3	1077.2	1341.6	761.7	609.8	609.8	793.1	508.6
Debt Forgiveness Grants	0.0	0.0	130.1	4.3	1468.2	240.2	35.0	212.1
Other Grants (residual)	25.0	2027.8	2716.8	2776.1	2409.6	2671.3	3441.9	1977.7
Bilateral Loans	782.2	1052.7	1282.0	1177.9	1025.7	1035.3	1156.8	709.4

Source: UNCTAD secretariat calculations, based on data from OECD, Development Assistance Committee Database online.