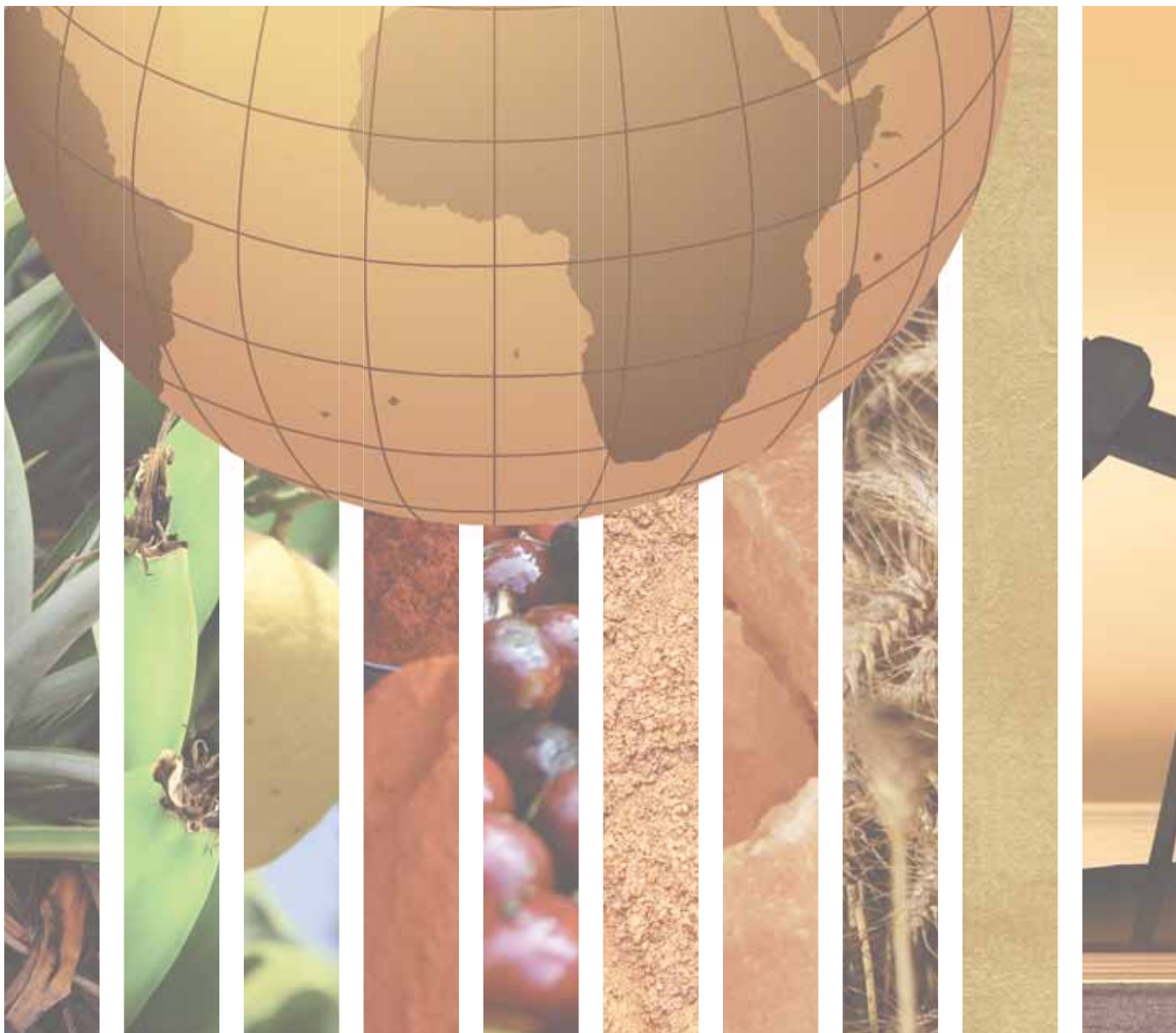


WESTERN ASIA





BAHRAIN		IRAQ	
GENERAL INFORMATION		GENERAL INFORMATION	
Total area (square kilometres), 2009	760	Total area (square kilometres), 2009	435,240
Agricultural area (as a percentage of total area), 2009	10	Agricultural area (as a percentage of total area), 2009	20
Population (1,000 inhabitants), 2010	1,262	Population (1,000 inhabitants), 2010	31,672
Labour force (1,000 workers), 2010	627	Labour force (1,000 workers), 2010	7,929
Women in labour force (as a percentage of total labour force), 2010	18	Women in labour force (as a percentage of total labour force), 2010	18
Labour force in agriculture (as a percentage of total labour force), 2010	1	Labour force in agriculture (as a percentage of total labour force), 2010	5
Women in agriculture (as a percentage of labour force in agriculture), 2010	–	Women in agriculture (as a percentage of labour force in agriculture), 2010	51
Gross Domestic Product (GDP) (in millions of US\$), 2010	22,661	Gross Domestic Product (GDP) (in millions of US\$), 2010	32,172
GDP by economic activity (as a percentage of GDP), 2009 (agriculture / industry / services)	-/41/59	GDP by economic activity (as a percentage of GDP), 2009 (agriculture / industry / services)	5/61/34
COMMODITY EXPORT DEPENDENCE		COMMODITY EXPORT DEPENDENCE	
Commodity exports (in millions of US\$ and as a percentage of merchandise exports), 2009-2010	9,228 (74%)	Commodity exports (in millions of US\$ and as a percentage of merchandise exports), 2009-2010	45,192 (99%)
Commodity exports (as a percentage of GDP), 2009-2010	44	Commodity exports (as a percentage of GDP), 2009-2010	n.r.
Exports by commodity groups (as a percentage of total commodity exports), 2009-2010		Exports by commodity groups (as a percentage of total commodity exports), 2009-2010	
All food items	6	All food items	–
Agricultural raw materials	–	Agricultural raw materials	–
Fuels	49	Fuels	99
Ores, metals, precious stones and non-monetary gold	45	Ores, metals, precious stones and non-monetary gold	1
Three leading commodity exports (as a percentage of commodity exports), 2009-2010	81	Three leading commodity exports (as a percentage of commodity exports), 2009-2010	99
(334) Petroleum oils or bituminous minerals > 70 % oil	40	(333) Petroleum oils, oils from bitumin. materials, crude	98
(684) Aluminium	30	(334) Petroleum oils or bituminous minerals > 70 % oil	0.8
(281) Iron ore and concentrates	11	(971) Gold, non-monetary (excluding gold ores and concentrates)	0.4
Leading destination markets for commodity exports (as a percentage of commodity exports), 2009-2010	40	Leading destination markets for commodity exports (as a percentage of commodity exports), 2009-2010	83
Japan, EU (27), India, Saudi Arabia, Republic of Korea	10/9/8/8/5	United States, EU (27), India, China, Republic of Korea	26/21/17/10/9
Export concentration ratio	(2000) 0.4215 (2010) 0.3273	Export concentration ratio	(2000) 0.9665 (2010) 0.9719
Membership in international commodity bodies	–	Membership in international commodity bodies	IIOC
FOOD SECURITY		FOOD SECURITY	
Commodity import value (in millions of US\$ and as a percentage of merchandise import value), 2009-2010	2,332 (24%)	Commodity import value (in millions of US\$ and as a percentage of merchandise import value), 2009-2010	12,384 (31%)
Net food imports (in millions of US\$), 2010	900	Net food imports (in millions of US\$), 2010	11,164
MDG 1.1: Percentage of population below 1US\$ (PPP) per day, 1990/92 and 2007/09	n.a.	MDG 1.1: Percentage of population below 1US\$ (PPP) per day, 1990/92 and 2007/09	n.a. - 4
MDG 1.9: Percentage of the population undernourished, 1991 and 2007	n.a.	MDG 1.9: Percentage of the population undernourished, 1991 and 2007	n.a.



JORDAN		KUWAIT	
GENERAL INFORMATION		GENERAL INFORMATION	
Total area (square kilometres), 2009	89,320	Total area (square kilometres), 2009	17,820
Agricultural area (as a percentage of total area), 2009	11	Agricultural area (as a percentage of total area), 2009	8
Population (1,000 inhabitants), 2010	6,187	Population (1,000 inhabitants), 2010	2,737
Labour force (1,000 workers), 2010	1,803	Labour force (1,000 workers), 2010	1,385
Women in labour force (as a percentage of total labour force), 2010	17	Women in labour force (as a percentage of total labour force), 2010	24
Labour force in agriculture (as a percentage of total labour force), 2010	6	Labour force in agriculture (as a percentage of total labour force), 2010	1
Women in agriculture (as a percentage of labour force in agriculture), 2010	61	Women in agriculture (as a percentage of labour force in agriculture), 2010	–
Gross Domestic Product (GDP) (in millions of US\$), 2010	27,543	Gross Domestic Product (GDP) (in millions of US\$), 2010	131,300
GDP by economic activity (as a percentage of GDP), 2009 (agriculture / industry / services)	3/30/67	GDP by economic activity (as a percentage of GDP), 2009 (agriculture / industry / services)	-/52/48
COMMODITY EXPORT DEPENDENCE		COMMODITY EXPORT DEPENDENCE	
Commodity exports (in millions of US\$ and as a percentage of merchandise exports), 2009-2010	1,785 (27%)	Commodity exports (in millions of US\$ and as a percentage of merchandise exports), 2009-2010	53,822 (91%)
Commodity exports (as a percentage of GDP), 2009-2010	7	Commodity exports (as a percentage of GDP), 2009-2010	45
Exports by commodity groups (as a percentage of total commodity exports), 2009-2010		Exports by commodity groups (as a percentage of total commodity exports), 2009-2010	
All food items	55	All food items	–
Agricultural raw materials	1	Agricultural raw materials	–
Fuels	3	Fuels	99
Ores, metals, precious stones and non-monetary gold	41	Ores, metals, precious stones and non-monetary gold	1
Three leading commodity exports (as a percentage of commodity exports), 2009-2010	55	Three leading commodity exports (as a percentage of commodity exports), 2009-2010	99
(272) Crude fertilizers (excluding those of division 56)	24	(333) Petroleum oils, oils from bitumin. materials, crude	78
(054) Vegetables	21	(334) Petroleum oils or bituminous minerals > 70 % oil	17
(971) Gold, non-monetary (excluding gold ores and concentrates)	10	(342) Liquefied propane and butane	4
Leading destination markets for commodity exports (as a percentage of commodity exports), 2009-2010	57	Leading destination markets for commodity exports (as a percentage of commodity exports), 2009-2010	69
Iraq, India, United Arab Emirates, Syrian Arab Republic, Lebanon	21/15/8/7/6	Japan, Republic of Korea, India, United States, China	19/16/16/9/9
Export concentration ratio	(2000) 0.1601 (2010) 0.1765	Export concentration ratio	(2000) 0.6440 (2010) 0.7106
Membership in international commodity bodies	IOOC	Membership in international commodity bodies	–
FOOD SECURITY		FOOD SECURITY	
Commodity import value (in millions of US\$ and as a percentage of merchandise import value), 2009-2010	5,930 (41%)	Commodity import value (in millions of US\$ and as a percentage of merchandise import value), 2009-2010	4,422 (21%)
Net food imports (in millions of US\$), 2010	1,437	Net food imports (in millions of US\$), 2010	3,625
MDG 1.1: Percentage of population below 1US\$ (PPP) per day, 1990/92 and 2007/09	3 - 0.4	MDG 1.1: Percentage of population below 1US\$ (PPP) per day, 1990/92 and 2007/09	n.a.
MDG 1.9: Percentage of the population undernourished, 1991 and 2007	5 - 5	MDG 1.9: Percentage of the population undernourished, 1991 and 2007	20 - 5



LEBANON		OCCUPIED PALESTINIAN TERRITORY	
GENERAL INFORMATION		GENERAL INFORMATION	
Total area (square kilometres), 2009	10,450	Total area (square kilometres), 2009	6,020
Agricultural area (as a percentage of total area), 2009	66	Agricultural area (as a percentage of total area), 2009	61
Population (1,000 inhabitants), 2010	4,228	Population (1,000 inhabitants), 2010	4,039
Labour force (1,000 workers), 2010	1,551	Labour force (1,000 workers), 2010	1,380
Women in labour force (as a percentage of total labour force), 2010	26	Women in labour force (as a percentage of total labour force), 2010	26
Labour force in agriculture (as a percentage of total labour force), 2010	2	Labour force in agriculture (as a percentage of total labour force), 2010	8
Women in agriculture (as a percentage of labour force in agriculture), 2010	32	Women in agriculture (as a percentage of labour force in agriculture), 2010	73
Gross Domestic Product (GDP) (in millions of US\$), 2010	38,801	Gross Domestic Product (GDP) (in millions of US\$), 2009	5,848
GDP by economic activity (as a percentage of GDP), 2009 (agriculture / industry / services)	6/18/76	GDP by economic activity (as a percentage of GDP), 2009 (agriculture / industry / services)	7/25/68
COMMODITY EXPORT DEPENDENCE		COMMODITY EXPORT DEPENDENCE	
Commodity exports (in millions of US\$ and as a percentage of merchandise exports), 2009-2010	1,756 (39%)	Commodity exports (in millions of US\$ and as a percentage of merchandise exports), 2009-2010	186 (35%)
Commodity exports (as a percentage of GDP), 2009-2010	5	Commodity exports (as a percentage of GDP), 2008-2009	3
Exports by commodity groups (as a percentage of total commodity exports), 2009-2010		Exports by commodity groups (as a percentage of total commodity exports), 2009-2010	
All food items	44	All food items	68
Agricultural raw materials	4	Agricultural raw materials	3
Fuels	1	Fuels	3
Ores, metals, precious stones and non-monetary gold	50	Ores, metals, precious stones and non-monetary gold	26
Three leading commodity exports (as a percentage of commodity exports), 2009-2010	43	Three leading commodity exports (as a percentage of commodity exports), 2009-2010	37
(971) Gold, non-monetary (excluding gold ores and concentrates)	22	(421) Fixed vegetable fats & oils, crude, refined, fractio.	16
(667) Pearls, precious & semi-precious stones	12	(273) Stone, sand and gravel	12
(282) Ferrous waste, scrap; remelting ingots, iron, steel	9	(122) Tobacco, manufactured	9
Leading destination markets for commodity exports (as a percentage of commodity exports), 2009-2010	65	Leading destination markets for commodity exports (as a percentage of commodity exports), 2009-2010	96
Switzerland, Syrian Arab Republic, EU (27), United Arab Emirates, Turkey	22/14/13/9/7	Israel, Jordan, EU (27), United States	84/7/3/2
Export concentration ratio	(2000) 0.1255 (2010) 0.1023	Export concentration ratio	(2000) 0.1799 (2010) 0.2427
Membership in international commodity bodies	IOOC	Membership in international commodity bodies	–
FOOD SECURITY		FOOD SECURITY	
Commodity import value (in millions of US\$ and as a percentage of merchandise import value), 2009-2010	6,642 (39%)	Commodity import value (in millions of US\$ and as a percentage of merchandise import value), 2009-2010	1,930 (49%)
Net food imports (in millions of US\$), 2010	1,997	Net food imports (in millions of US\$), 2010	984
MDG 1.1: Percentage of population below 1US\$ (PPP) per day, 1990/92 and 2007/09	n.a.	MDG 1.1: Percentage of population below 1US\$ (PPP) per day, 1990/92 and 2007/09	n.a.
MDG 1.9: Percentage of the population undernourished, 1991 and 2007	5 - 5	MDG 1.9: Percentage of the population undernourished, 1991 and 2007	n.a.



OMAN		QATAR	
GENERAL INFORMATION		GENERAL INFORMATION	
Total area (square kilometres), 2009	309,500	Total area (square kilometres), 2009	11,590
Agricultural area (as a percentage of total area), 2009	6	Agricultural area (as a percentage of total area), 2009	6
Population (1,000 inhabitants), 2010	2,782	Population (1,000 inhabitants), 2010	1,759
Labour force (1,000 workers), 2010	1,100	Labour force (1,000 workers), 2010	1,140
Women in labour force (as a percentage of total labour force), 2010	19	Women in labour force (as a percentage of total labour force), 2010	11
Labour force in agriculture (as a percentage of total labour force), 2010	29	Labour force in agriculture (as a percentage of total labour force), 2010	1
Women in agriculture (as a percentage of labour force in agriculture), 2010	7	Women in agriculture (as a percentage of labour force in agriculture), 2010	–
Gross Domestic Product (GDP) (in millions of US\$), 2010	63,748	Gross Domestic Product (GDP) (in millions of US\$), 2010	129,486
GDP by economic activity (as a percentage of GDP), 2009 (agriculture / industry / services)	1/63/36	GDP by economic activity (as a percentage of GDP), 2009 (agriculture / industry / services)	-/61/39
COMMODITY EXPORT DEPENDENCE		COMMODITY EXPORT DEPENDENCE	
Commodity exports (in millions of US\$ and as a percentage of merchandise exports), 2009-2010	24,805 (80%)	Commodity exports (in millions of US\$ and as a percentage of merchandise exports), 2009-2010	54,655 (91%)
Commodity exports (as a percentage of GDP), 2009-2010	42	Commodity exports (as a percentage of GDP), 2009-2010	48
Exports by commodity groups (as a percentage of total commodity exports), 2009-2010		Exports by commodity groups (as a percentage of total commodity exports), 2009-2010	
All food items	5	All food items	–
Agricultural raw materials	–	Agricultural raw materials	–
Fuels	83	Fuels	99
Ores, metals, precious stones and non-monetary gold	12	Ores, metals, precious stones and non-monetary gold	1
Three leading commodity exports (as a percentage of commodity exports), 2009-2010	83	Three leading commodity exports (as a percentage of commodity exports), 2009-2010	89
(333) Petroleum oils, oils from bitumin. materials, crude	64	(333) Petroleum oils, oils from bitumin. materials, crude	48
(343) Natural gas, whether or not liquefied	10	(343) Natural gas, whether or not liquefied	34
(684) Aluminium	9	(342) Liquefied propane and butane	7
Leading destination markets for commodity exports (as a percentage of commodity exports), 2009-2010	80	Leading destination markets for commodity exports (as a percentage of commodity exports), 2009-2010	86
China, Japan, Republic of Korea, Thailand, United Arab Emirates	32/17/15/10/6	Japan, Republic of Korea, EU (27), Singapore, India	38/17/13/10/8
Export concentration ratio	(2000) 0.8021 (2010) 0.4336	Export concentration ratio	(2000) 0.6043 (2010) 0.4923
Membership in international commodity bodies	–	Membership in international commodity bodies	–
FOOD SECURITY		FOOD SECURITY	
Commodity import value (in millions of US\$ and as a percentage of merchandise import value), 2009-2010	4,029 (23%)	Commodity import value (in millions of US\$ and as a percentage of merchandise import value), 2009-2010	2,466 (11%)
Net food imports (in millions of US\$), 2010	584	Net food imports (in millions of US\$), 2010	1,536
MDG 1.1: Percentage of population below 1US\$ (PPP) per day, 1990/92 and 2007/09	n.a.	MDG 1.1: Percentage of population below 1US\$ (PPP) per day, 1990/92 and 2007/09	n.a.
MDG 1.9: Percentage of the population undernourished, 1991 and 2007	n.a.	MDG 1.9: Percentage of the population undernourished, 1991 and 2007	n.a.



SAUDI ARABIA		SYRIAN ARAB REPUBLIC	
GENERAL INFORMATION		GENERAL INFORMATION	
Total area (square kilometres), 2009	2,149,690	Total area (square kilometres), 2009	185,180
Agricultural area (as a percentage of total area), 2009	81	Agricultural area (as a percentage of total area), 2009	75
Population (1,000 inhabitants), 2010	27,448	Population (1,000 inhabitants), 2010	20,411
Labour force (1,000 workers), 2010	10,087	Labour force (1,000 workers), 2010	6,689
Women in labour force (as a percentage of total labour force), 2010	16	Women in labour force (as a percentage of total labour force), 2010	22
Labour force in agriculture (as a percentage of total labour force), 2010	5	Labour force in agriculture (as a percentage of total labour force), 2010	20
Women in agriculture (as a percentage of labour force in agriculture), 2010	6	Women in agriculture (as a percentage of labour force in agriculture), 2010	61
Gross Domestic Product (GDP) (in millions of US\$), 2010	435,331	Gross Domestic Product (GDP) (in millions of US\$), 2010	59,403
GDP by economic activity (as a percentage of GDP), 2009 (agriculture / industry / services)	3/59/38	GDP by economic activity (as a percentage of GDP), 2009 (agriculture / industry / services)	21/34/45
COMMODITY EXPORT DEPENDENCE		COMMODITY EXPORT DEPENDENCE	
Commodity exports (in millions of US\$ and as a percentage of merchandise exports), 2009-2010	184,207 (86%)	Commodity exports (in millions of US\$ and as a percentage of merchandise exports), 2009-2010	7,720 (67%)
Commodity exports (as a percentage of GDP), 2009-2010	46	Commodity exports (as a percentage of GDP), 2009-2010	14
Exports by commodity groups (as a percentage of total commodity exports), 2009-2010		Exports by commodity groups (as a percentage of total commodity exports), 2009-2010	
All food items	1	All food items	39
Agricultural raw materials	–	Agricultural raw materials	2
Fuels	98	Fuels	53
Ores, metals, precious stones and non-monetary gold	1	Ores, metals, precious stones and non-monetary gold	6
Three leading commodity exports (as a percentage of commodity exports), 2009-2010	97	Three leading commodity exports (as a percentage of commodity exports), 2009-2010	61
(333) Petroleum oils, oils from bitumin. materials, crude	86	(333) Petroleum oils, oils from bitumin. materials, crude	41
(334) Petroleum oils or bituminous minerals > 70 % oil	8	(334) Petroleum oils or bituminous minerals > 70 % oil	11
(342) Liquefied propane and butane	3	(111) Non-alcoholic beverages, n.e.s.	9
Leading destination markets for commodity exports (as a percentage of commodity exports), 2009-2010	65	Leading destination markets for commodity exports (as a percentage of commodity exports), 2009-2010	80
Taiwan Province of China, Japan, United States, China, Republic of Korea	16/15/13/11/10	EU (27), Iraq, Lebanon, Saudi Arabia, Turkey	42/21/9/4/4
Export concentration ratio	(2000) 0.7224 (2010) 0.7377	Export concentration ratio	(2000) 0.6208 (2010) 0.2640
Membership in international commodity bodies	IGC	Membership in international commodity bodies	ICAC, IOOC
FOOD SECURITY		FOOD SECURITY	
Commodity import value (in millions of US\$ and as a percentage of merchandise import value), 2009-2010	18,568 (24%)	Commodity import value (in millions of US\$ and as a percentage of merchandise import value), 2009-2010	6,849 (40%)
Net food imports (in millions of US\$), 2010	13,350	Net food imports (in millions of US\$), 2010	- 585
MDG 1.1: Percentage of population below 1US\$ (PPP) per day, 1990/92 and 2007/09	n.a.	MDG 1.1: Percentage of population below 1US\$ (PPP) per day, 1990/92 and 2007/09	n.a. - 2
MDG 1.9: Percentage of the population undernourished, 1991 and 2007	5 - 5	MDG 1.9: Percentage of the population undernourished, 1991 and 2007	5 - 5



UNITED ARAB EMIRATES		TURKEY	
GENERAL INFORMATION		GENERAL INFORMATION	
Total area (square kilometres), 2009	83,600	Total area (square kilometres), 2009	783,560
Agricultural area (as a percentage of total area), 2009	7	Agricultural area (as a percentage of total area), 2009	50
Population (1,000 inhabitants), 2010	7,512	Population (1,000 inhabitants), 2010	72,752
Labour force (1,000 workers), 2010	4,741	Labour force (1,000 workers), 2010	24,847
Women in labour force (as a percentage of total labour force), 2010	14	Women in labour force (as a percentage of total labour force), 2010	26
Labour force in agriculture (as a percentage of total labour force), 2010	3	Labour force in agriculture (as a percentage of total labour force), 2010	32
Women in agriculture (as a percentage of labour force in agriculture), 2010	–	Women in agriculture (as a percentage of labour force in agriculture), 2010	53
Gross Domestic Product (GDP) (in millions of US\$), 2010	277,970	Gross Domestic Product (GDP) (in millions of US\$), 2010	747,420
GDP by economic activity (as a percentage of GDP), 2009 (agriculture / industry / services)	1/55/44	GDP by economic activity (as a percentage of GDP), 2009 (agriculture / industry / services)	9/25/66
COMMODITY EXPORT DEPENDENCE		COMMODITY EXPORT DEPENDENCE	
Commodity exports (in millions of US\$ and as a percentage of merchandise exports), 2009-2010	137,789 (75%)	Commodity exports (in millions of US\$ and as a percentage of merchandise exports), 2009-2010	23,206 (22%)
Commodity exports (as a percentage of GDP), 2009-2010	52	Commodity exports (as a percentage of GDP), 2009-2010	3
Exports by commodity groups (as a percentage of total commodity exports), 2009-2010		Exports by commodity groups (as a percentage of total commodity exports), 2009-2010	
All food items	5	All food items	48
Agricultural raw materials	–	Agricultural raw materials	2
Fuels	66	Fuels	18
Ores, metals, precious stones and non-monetary gold	29	Ores, metals, precious stones and non-monetary gold	32
Three leading commodity exports (as a percentage of commodity exports), 2009-2010	71	Three leading commodity exports (as a percentage of commodity exports), 2009-2010	44
(333) Petroleum oils, oils from bitumin. materials, crude	49	(334) Petroleum oils or bituminous minerals > 70 % oil	16
(667) Pearls, precious & semi-precious stones	11	(971) Gold, non-monetary (excluding gold ores and concentrates)	14
(971) Gold, non-monetary (excluding gold ores and concentrates)	11	(057) Fruits and nuts (excluding oil nuts), fresh or dried	14
Leading destination markets for commodity exports (as a percentage of commodity exports), 2009-2010	67	Leading destination markets for commodity exports (as a percentage of commodity exports), 2009-2010	62
Japan, India, Republic of Korea, Thailand, EU (27)	27/20/8/8/4	EU (27), Switzerland, Iraq, China, Russian Federation	32/11/8/6/5
Export concentration ratio	(2000) 0.5463 (2010) 0.3198	Export concentration ratio	(2000) 0.0981 (2010) 0.0744
Membership in international commodity bodies	ISO	Membership in international commodity bodies	ICO, IGC, ICAC, IOOC, ISO
FOOD SECURITY		FOOD SECURITY	
Commodity import value (in millions of US\$ and as a percentage of merchandise import value), 2009-2010	51,500 (31%)	Commodity import value (in millions of US\$ and as a percentage of merchandise import value), 2009-2010	48,810 (32%)
Net food imports (in millions of US\$), 2010	7,807	Net food imports (in millions of US\$), 2010	- 4,465
MDG 1.1: Percentage of population below 1US\$ (PPP) per day, 1990/92 and 2007/09	n.a.	MDG 1.1: Percentage of population below 1US\$ (PPP) per day, 1990/92 and 2007/09	2 - 3
MDG 1.9: Percentage of the population undernourished, 1991 and 2007	5 - 5	MDG 1.9: Percentage of the population undernourished, 1991 and 2007	5 - 5


YEMEN
GENERAL INFORMATION

Total area (square kilometres), 2009	527,970
Agricultural area (as a percentage of total area), 2009	44
Population (1,000 inhabitants), 2010	24,053
Labour force (1,000 workers), 2010	5,958
Women in labour force (as a percentage of total labour force), 2010	25
Labour force in agriculture (as a percentage of total labour force), 2010	39
Women in agriculture (as a percentage of labour force in agriculture), 2010	40
Gross Domestic Product (GDP) (in millions of US\$), 2010	33,459
GDP by economic activity (as a percentage of GDP), 2009 (agriculture / industry / services)	10/42/48

COMMODITY EXPORT DEPENDENCE

Commodity exports (in millions of US\$ and as a percentage of merchandise exports), 2009-2010	7,158 (97%)
Commodity exports (as a percentage of GDP), 2009-2010	24
Exports by commodity groups (as a percentage of total commodity exports), 2009-2010	
All food items	6
Agricultural raw materials	–
Fuels	93
Ores, metals, precious stones and non-monetary gold	1
Three leading commodity exports (as a percentage of commodity exports), 2009-2010	95
(333) Petroleum oils, oils from bitumin. materials, crude	84
(334) Petroleum oils or bituminous minerals > 70 % oil	8
(03) Fishery products	3
Leading destination markets for commodity exports (as a percentage of commodity exports), 2009-2010	77
China, Thailand, India, United Arab Emirates, South Africa	27/20/18/6/6
Export concentration ratio	(2000) 0.8942 (2010) 0.7951
Membership in international commodity bodies	ICO

FOOD SECURITY

Commodity import value (in millions of US\$ and as a percentage of merchandise import value), 2009-2010	4,764 (51%)
Net food imports (in millions of US\$), 2010	2,347
MDG 1.1: Percentage of population below 1US\$ (PPP) per day, 1990/92 and 2007/09	5 - 18
MDG 1.9: Percentage of the population undernourished, 1991 and 2007	30 - 30