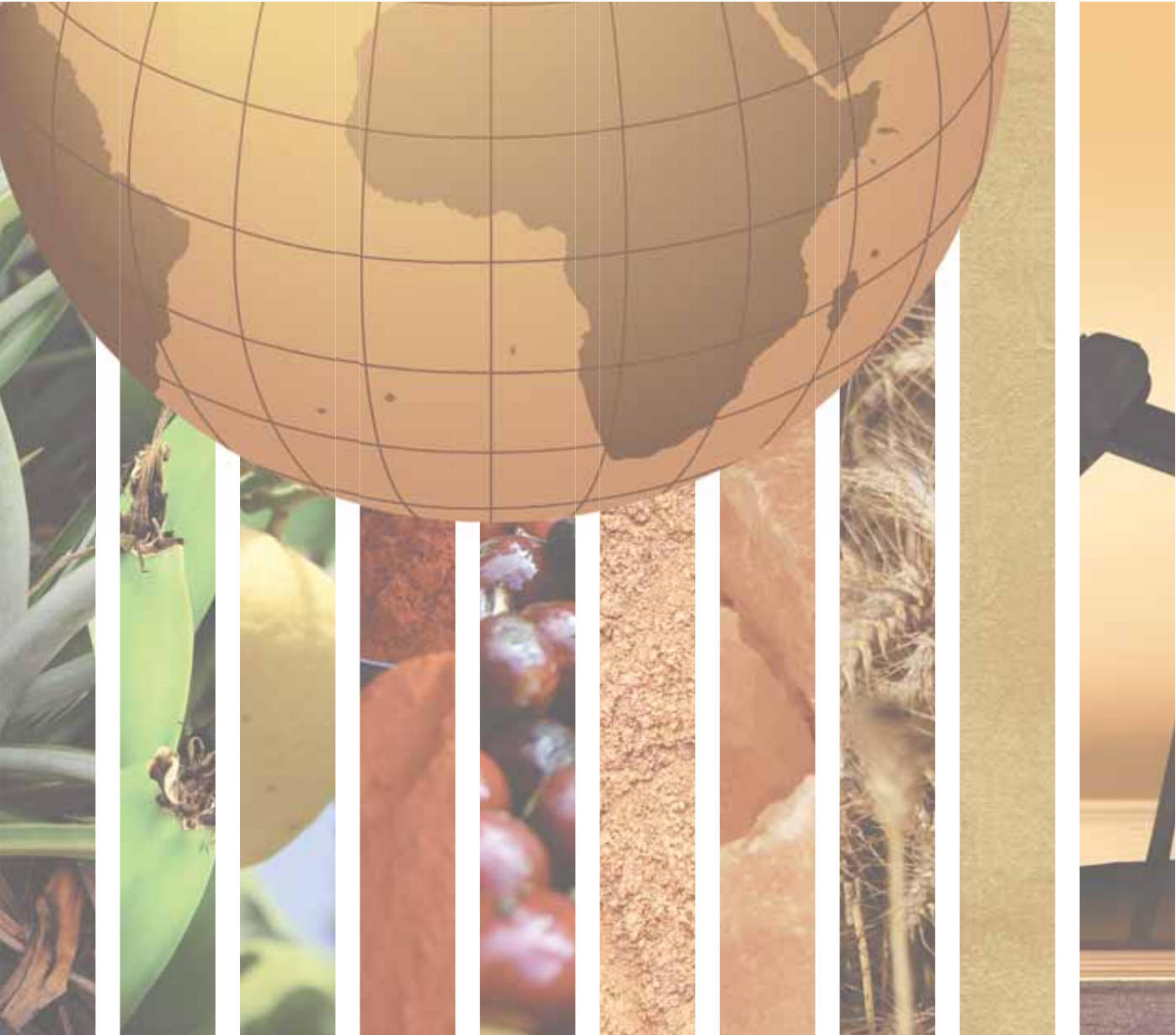


EAST AFRICA





BURUNDI		COMOROS	
GENERAL INFORMATION		GENERAL INFORMATION	
Total area (square kilometres), 2009	27,830	Total area (square kilometres), 2009	1,860
Agricultural area (as a percentage of total area), 2009	77	Agricultural area (as a percentage of total area), 2009	83
Population (1,000 inhabitants), 2010	8,383	Population (1,000 inhabitants), 2010	735
Labour force (1,000 workers), 2010	4,192	Labour force (1,000 workers), 2010	320
Women in labour force (as a percentage of total labour force), 2010	51	Women in labour force (as a percentage of total labour force), 2010	43
Labour force in agriculture (as a percentage of total labour force), 2010	89	Labour force in agriculture (as a percentage of total labour force), 2010	69
Women in agriculture (as a percentage of labour force in agriculture), 2010	56	Women in agriculture (as a percentage of labour force in agriculture), 2010	52
Gross Domestic Product (GDP) (in millions of US\$), 2010	1,400	Gross Domestic Product (GDP) (in millions of US\$), 2010	536
GDP by economic activity (as a percentage of GDP), 2009 (agriculture / industry / services)	45/15/40	GDP by economic activity (as a percentage of GDP), 2009 (agriculture / industry / services)	48/10/41
COMMODITY EXPORT DEPENDENCE		COMMODITY EXPORT DEPENDENCE	
Commodity exports (in millions of US\$ and as a percentage of merchandise exports), 2009-2010	74 (91%)	Commodity exports (in millions of US\$ and as a percentage of merchandise exports), 2009-2010	4 (29%)
Commodity exports (as a percentage of GDP), 2009-2010	6	Commodity exports (as a percentage of GDP), 2009-2010	1
Exports by commodity groups (as a percentage of total commodity exports), 2009-2010		Exports by commodity groups (as a percentage of total commodity exports), 2009-2010	
All food items	79	All food items	95
Agricultural raw materials	5	Agricultural raw materials	2
Fuels	2	Fuels	–
Ores, metals, precious stones and non-monetary gold	15	Ores, metals, precious stones and non-monetary gold	4
Three leading commodity exports (as a percentage of commodity exports), 2009-2010	83	Three leading commodity exports (as a percentage of commodity exports), 2009-2010	96
(071) Coffee and coffee substitutes	61	(075) Spices	92
(074) Tea and mate	12	(971) Gold, non-monetary (excluding gold ores and concentrates)	2
(971) Gold, non-monetary (excluding gold ores and concentrates)	10	(03) Fishery products	2
Leading destination markets for commodity exports (as a percentage of commodity exports), 2009-2010	77	Leading destination markets for commodity exports (as a percentage of commodity exports), 2009-2010	91
EU (27), Switzerland, United Arab Emirates, Kenya, Pakistan	43/13/9/6/6	EU (27), Singapore, India, United States, United Arab Emirates	41/25/16/6/3
Export concentration ratio	(2000) 0.6928 (2010) 0.5385	Export concentration ratio	(2000) 0.7597 (2010) 0.5061
Membership in international commodity bodies	ICO, INBAR	Membership in international commodity bodies	–
FOOD SECURITY		FOOD SECURITY	
Commodity import value (in millions of US\$ and as a percentage of merchandise import value), 2009-2010	99 (22%)	Commodity import value (in millions of US\$ and as a percentage of merchandise import value), 2009-2010	70 (40%)
Net food imports (in millions of US\$), 2010	- 5	Net food imports (in millions of US\$), 2010	60
MDG 1.1: Percentage of population below 1US\$ (PPP) per day, 1990/92 and 2007/09	84 - 81	MDG 1.1: Percentage of population below 1US\$ (PPP) per day, 1990/92 and 2007/09	n.a. - 46
MDG 1.9: Percentage of the population undernourished, 1991 and 2007	44 - 62	MDG 1.9: Percentage of the population undernourished, 1991 and 2007	38 - 47



DJIBOUTI		ERITREA	
GENERAL INFORMATION		GENERAL INFORMATION	
Total area (square kilometres), 2009	23,200	Total area (square kilometres), 2009	117,600
Agricultural area (as a percentage of total area), 2009	73	Agricultural area (as a percentage of total area), 2009	65
Population (1,000 inhabitants), 2010	889	Population (1,000 inhabitants), 2010	5,254
Labour force (1,000 workers), 2010	385	Labour force (1,000 workers), 2010	2,098
Women in labour force (as a percentage of total labour force), 2010	43	Women in labour force (as a percentage of total labour force), 2010	41
Labour force in agriculture (as a percentage of total labour force), 2010	74	Labour force in agriculture (as a percentage of total labour force), 2010	74
Women in agriculture (as a percentage of labour force in agriculture), 2010	46	Women in agriculture (as a percentage of labour force in agriculture), 2010	44
Gross Domestic Product (GDP) (in millions of US\$), 2010	1,010	Gross Domestic Product (GDP) (in millions of US\$), 2010	2,136
GDP by economic activity (as a percentage of GDP), 2009 (agriculture / industry / services)	4/18/78	GDP by economic activity (as a percentage of GDP), 2009 (agriculture / industry / services)	24/19/57
COMMODITY EXPORT DEPENDENCE		COMMODITY EXPORT DEPENDENCE	
Commodity exports (in millions of US\$ and as a percentage of merchandise exports), 2009-2010	60 (85%)	Commodity exports (in millions of US\$ and as a percentage of merchandise exports), 2009-2010	5 (46%)
Commodity exports (as a percentage of GDP), 2009-2010	6	Commodity exports (as a percentage of GDP), 2009-2010	0.2
Exports by commodity groups (as a percentage of total commodity exports), 2009-2010		Exports by commodity groups (as a percentage of total commodity exports), 2009-2010	
All food items	75	All food items	71
Agricultural raw materials	2	Agricultural raw materials	25
Fuels	8	Fuels	–
Ores, metals, precious stones and non-monetary gold	14	Ores, metals, precious stones and non-monetary gold	4
Three leading commodity exports (as a percentage of commodity exports), 2009-2010	55	Three leading commodity exports (as a percentage of commodity exports), 2009-2010	43
(022) Milk, cream and milk products (excluding butter, cheese)	24	(001) Live animals other than animals of division 03	19
(001) Live animals other than animals of division 03	23	(03) Fishery products	14
(971) Gold, non-monetary (excluding gold ores and concentrates)	8	(211) Hides and skins (except furskins), raw	10
Leading destination markets for commodity exports (as a percentage of commodity exports), 2009-2010	78	Leading destination markets for commodity exports (as a percentage of commodity exports), 2009-2010	81
Somalia, Ethiopia, Egypt, Yemen, United Arab Emirates	33/14/13/9/9	EU (27), Saudi Arabia, Sudan, China, Turkey	27/22/19/9/4
Export concentration ratio	(2000) 0.1159 (2010) 0.1750	Export concentration ratio	(2000) 0.1959 (2010) 0.1275
Membership in international commodity bodies	–	Membership in international commodity bodies	–
FOOD SECURITY		FOOD SECURITY	
Commodity import value (in millions of US\$ and as a percentage of merchandise import value), 2009-2010	152 (35%)	Commodity import value (in millions of US\$ and as a percentage of merchandise import value), 2009-2010	262 (42%)
Net food imports (in millions of US\$), 2010	82	Net food imports (in millions of US\$), 2010	230
MDG 1.1: Percentage of population below 1US\$ (PPP) per day, 1990/92 and 2007/09	5 - 19	MDG 1.1: Percentage of population below 1US\$ (PPP) per day, 1990/92 and 2007/09	n.a.
MDG 1.9: Percentage of the population undernourished, 1991 and 2007	60 - 26	MDG 1.9: Percentage of the population undernourished, 1991 and 2007	67 - 65



ETHIOPIA		KENYA	
GENERAL INFORMATION		GENERAL INFORMATION	
Total area (square kilometres), 2009	1,104,300	Total area (square kilometres), 2009	580,370
Agricultural area (as a percentage of total area), 2009	32	Agricultural area (as a percentage of total area), 2009	47
Population (1,000 inhabitants), 2010	82,950	Population (1,000 inhabitants), 2010	40,513
Labour force (1,000 workers), 2010	40,930	Labour force (1,000 workers), 2010	18,724
Women in labour force (as a percentage of total labour force), 2010	48	Women in labour force (as a percentage of total labour force), 2010	46
Labour force in agriculture (as a percentage of total labour force), 2010	77	Labour force in agriculture (as a percentage of total labour force), 2010	71
Women in agriculture (as a percentage of labour force in agriculture), 2010	46	Women in agriculture (as a percentage of labour force in agriculture), 2010	49
Gross Domestic Product (GDP) (in millions of US\$), 2010	26,680	Gross Domestic Product (GDP) (in millions of US\$), 2010	32,152
GDP by economic activity (as a percentage of GDP), 2009 (agriculture / industry / services)	47/13/41	GDP by economic activity (as a percentage of GDP), 2009 (agriculture / industry / services)	27/18/54
COMMODITY EXPORT DEPENDENCE		COMMODITY EXPORT DEPENDENCE	
Commodity exports (in millions of US\$ and as a percentage of merchandise exports), 2009-2010	1,892 (90%)	Commodity exports (in millions of US\$ and as a percentage of merchandise exports), 2009-2010	3,110 (65%)
Commodity exports (as a percentage of GDP), 2009-2010	7	Commodity exports (as a percentage of GDP), 2009-2010	10
Exports by commodity groups (as a percentage of total commodity exports), 2009-2010		Exports by commodity groups (as a percentage of total commodity exports), 2009-2010	
All food items	81	All food items	65
Agricultural raw materials	10	Agricultural raw materials	22
Fuels	–	Fuels	7
Ores, metals, precious stones and non-monetary gold	9	Ores, metals, precious stones and non-monetary gold	6
Three leading commodity exports (as a percentage of commodity exports), 2009-2010	67	Three leading commodity exports (as a percentage of commodity exports), 2009-2010	57
(071) Coffee and coffee substitutes	30	(074) Tea and mate	27
(054) Vegetables	19	(292) Crude vegetable materials, n.e.s.	21
(222) Oil seeds and oleaginous fruits (excluding flour)	18	(054) Vegetables	9
Leading destination markets for commodity exports (as a percentage of commodity exports), 2009-2010	64	Leading destination markets for commodity exports (as a percentage of commodity exports), 2009-2010	65
EU (27), China, Somalia, Saudi Arabia, Switzerland	29/12/10/7/6	EU (27), Egypt, Uganda, Pakistan, United Republic of Tanzania	44/7/5/5/4
Export concentration ratio	(2000) 0.5038 (2010) 0.3479	Export concentration ratio	(2000) 0.2641 (2010) 0.1890
Membership in international commodity bodies	INBAR, ICO, ISO	Membership in international commodity bodies	INBAR, ICO, IGC, ICAC, ISO
FOOD SECURITY		FOOD SECURITY	
Commodity import value (in millions of US\$ and as a percentage of merchandise import value), 2009-2010	2,644 (30%)	Commodity import value (in millions of US\$ and as a percentage of merchandise import value), 2009-2010	4,134 (37%)
Net food imports (in millions of US\$), 2010	- 822	Net food imports (in millions of US\$), 2010	- 629
MDG 1.1: Percentage of population below 1US\$ (PPP) per day, 1990/92 and 2007/09	61 - 39	MDG 1.1: Percentage of population below 1US\$ (PPP) per day, 1990/92 and 2007/09	38 - 20
MDG 1.9: Percentage of the population undernourished, 1991 and 2007	69 - 41	MDG 1.9: Percentage of the population undernourished, 1991 and 2007	33 - 33



MADAGASCAR		MALAWI	
GENERAL INFORMATION		GENERAL INFORMATION	
Total area (square kilometres), 2009	587,040	Total area (square kilometres), 2009	118,480
Agricultural area (as a percentage of total area), 2009	70	Agricultural area (as a percentage of total area), 2009	47
Population (1,000 inhabitants), 2010	20,714	Population (1,000 inhabitants), 2010	14,901
Labour force (1,000 workers), 2010	10,344	Labour force (1,000 workers), 2010	6,213
Women in labour force (as a percentage of total labour force), 2010	49	Women in labour force (as a percentage of total labour force), 2010	49
Labour force in agriculture (as a percentage of total labour force), 2010	70	Labour force in agriculture (as a percentage of total labour force), 2010	79
Women in agriculture (as a percentage of labour force in agriculture), 2010	53	Women in agriculture (as a percentage of labour force in agriculture), 2010	59
Gross Domestic Product (GDP) (in millions of US\$), 2010	8,790	Gross Domestic Product (GDP) (in millions of US\$), 2010	5,196
GDP by economic activity (as a percentage of GDP), 2009 (agriculture / industry / services)	27/20/54	GDP by economic activity (as a percentage of GDP), 2009 (agriculture / industry / services)	29/16/55
COMMODITY EXPORT DEPENDENCE		COMMODITY EXPORT DEPENDENCE	
Commodity exports (in millions of US\$ and as a percentage of merchandise exports), 2009-2010	532 (50%)	Commodity exports (in millions of US\$ and as a percentage of merchandise exports), 2009-2010	1,011 (90%)
Commodity exports (as a percentage of GDP), 2009-2010	6	Commodity exports (as a percentage of GDP), 2009-2010	20
Exports by commodity groups (as a percentage of total commodity exports), 2009-2010		Exports by commodity groups (as a percentage of total commodity exports), 2009-2010	
All food items	64	All food items	93
Agricultural raw materials	11	Agricultural raw materials	4
Fuels	6	Fuels	-
Ores, metals, precious stones and non-monetary gold	19	Ores, metals, precious stones and non-monetary gold	3
Three leading commodity exports (as a percentage of commodity exports), 2009-2010	57	Three leading commodity exports (as a percentage of commodity exports), 2009-2010	80
(03) Fishery products	26	(121) Tobacco, unmanufactured; tobacco refuse	65
(075) Spices	20	(074) Tea and mate	8
(287) Ores and concentrates of base metals, n.e.s.	11	(061) Sugar, molasses and honey	7
Leading destination markets for commodity exports (as a percentage of commodity exports), 2009-2010	80	Leading destination markets for commodity exports (as a percentage of commodity exports), 2009-2010	65
EU (27), China, Canada, Singapore, United States	52/15/5/4/4	EU (27), Egypt, South Africa, Canada, United States	40/8/7/6/4
Export concentration ratio	(2000) 0.2554 (2010) 0.2046	Export concentration ratio	(2000) 0.5812 (2010) 0.5375
Membership in international commodity bodies	INBAR	Membership in international commodity bodies	ISO
FOOD SECURITY		FOOD SECURITY	
Commodity import value (in millions of US\$ and as a percentage of merchandise import value), 2009-2010	710 (25%)	Commodity import value (in millions of US\$ and as a percentage of merchandise import value), 2009-2010	514 (25%)
Net food imports (in millions of US\$), 2010	48	Net food imports (in millions of US\$), 2010	- 516
MDG 1.1: Percentage of population below 1US\$ (PPP) per day, 1990/92 and 2007/09	73 - 68	MDG 1.1: Percentage of population below 1US\$ (PPP) per day, 1990/92 and 2007/09	83 - 74
MDG 1.9: Percentage of the population undernourished, 1991 and 2007	21 - 25	MDG 1.9: Percentage of the population undernourished, 1991 and 2007	43 - 27



MAURITIUS		MAYOTTE	
GENERAL INFORMATION		GENERAL INFORMATION	
Total area (square kilometres), 2009	2,040	Total area (square kilometres), 2009	380
Agricultural area (as a percentage of total area), 2009	48	Agricultural area (as a percentage of total area), 2009	53
Population (1,000 inhabitants), 2010	1,299	Population (1,000 inhabitants), 2010	204
Labour force (1,000 workers), 2010	590	Labour force (1,000 workers), 2010	89
Women in labour force (as a percentage of total labour force), 2010	37	Women in labour force (as a percentage of total labour force), 2010	44
Labour force in agriculture (as a percentage of total labour force), 2010	8	Labour force in agriculture (as a percentage of total labour force), 2010	70
Women in agriculture (as a percentage of labour force in agriculture), 2010	25	Women in agriculture (as a percentage of labour force in agriculture), 2010	52
Gross Domestic Product (GDP) (in millions of US\$), 2010	9,512	Gross Domestic Product (GDP) (in millions of US\$), 2010	n.a.
GDP by economic activity (as a percentage of GDP), 2009 (agriculture / industry / services)	4/27/69	GDP by economic activity (as a percentage of GDP), 2009 (agriculture / industry / services)	n.a.
COMMODITY EXPORT DEPENDENCE		COMMODITY EXPORT DEPENDENCE	
Commodity exports (in millions of US\$ and as a percentage of merchandise exports), 2009-2010	729 (40%)	Commodity exports (in millions of US\$ and as a percentage of merchandise exports), 2009-2010	1 (17%)
Commodity exports (as a percentage of GDP), 2009-2010	8	Commodity exports (as a percentage of GDP), 2009-2010	n.a.
Exports by commodity groups (as a percentage of total commodity exports), 2009-2010		Exports by commodity groups (as a percentage of total commodity exports), 2009-2010	
All food items	89	All food items	76
Agricultural raw materials	3	Agricultural raw materials	–
Fuels	–	Fuels	3
Ores, metals, precious stones and non-monetary gold	8	Ores, metals, precious stones and non-monetary gold	21
Three leading commodity exports (as a percentage of commodity exports), 2009-2010	81	Three leading commodity exports (as a percentage of commodity exports), 2009-2010	80
(03) Fishery products	40	(03) Fishery products	57
(061) Sugar, molasses and honey	35	(288) Non-ferrous base metal waste and scrap, n.e.s.	14
(667) Pearls, precious & semi-precious stones	6	(111) Non-alcoholic beverages, n.e.s.	9
Leading destination markets for commodity exports (as a percentage of commodity exports), 2009-2010	88	Leading destination markets for commodity exports (as a percentage of commodity exports), 2009-2010	99
EU (27), United States, Madagascar, Japan, South Africa	75/6/5/1/1	EU (27), Indonesia, Comoros, India, Singapore	69/13/10/6/1
Export concentration ratio	(2000) 0.3345 (2010) 0.2347	Export concentration ratio	(2000) 0.4433 (2010) 0.2559
Membership in international commodity bodies	ISO	Membership in international commodity bodies	—
FOOD SECURITY		FOOD SECURITY	
Commodity import value (in millions of US\$ and as a percentage of merchandise import value), 2009-2010	1,784 (44%)	Commodity import value (in millions of US\$ and as a percentage of merchandise import value), 2009-2010	146 (29%)
Net food imports (in millions of US\$), 2010	239	Net food imports (in millions of US\$), 2010	106
MDG 1.1: Percentage of population below 1US\$ (PPP) per day, 1990/92 and 2007/09	n.a.	MDG 1.1: Percentage of population below 1US\$ (PPP) per day, 1990/92 and 2007/09	n.a.
MDG 1.9: Percentage of the population undernourished, 1991 and 2007	7 - 5	MDG 1.9: Percentage of the population undernourished, 1991 and 2007	n.a.



MOZAMBIQUE		RWANDA	
GENERAL INFORMATION		GENERAL INFORMATION	
Total area (square kilometres), 2009	799,380	Total area (square kilometres), 2009	26,340
Agricultural area (as a percentage of total area), 2009	62	Agricultural area (as a percentage of total area), 2009	76
Population (1,000 inhabitants), 2010	23,391	Population (1,000 inhabitants), 2010	10,624
Labour force (1,000 workers), 2010	10,772	Labour force (1,000 workers), 2010	4,879
Women in labour force (as a percentage of total labour force), 2010	56	Women in labour force (as a percentage of total labour force), 2010	52
Labour force in agriculture (as a percentage of total labour force), 2010	81	Labour force in agriculture (as a percentage of total labour force), 2010	89
Women in agriculture (as a percentage of labour force in agriculture), 2010	65	Women in agriculture (as a percentage of labour force in agriculture), 2010	56
Gross Domestic Product (GDP) (in millions of US\$), 2010	9,159	Gross Domestic Product (GDP) (in millions of US\$), 2010	5,645
GDP by economic activity (as a percentage of GDP), 2009 (agriculture / industry / services)	28/25/47	GDP by economic activity (as a percentage of GDP), 2009 (agriculture / industry / services)	36/15/49
COMMODITY EXPORT DEPENDENCE		COMMODITY EXPORT DEPENDENCE	
Commodity exports (in millions of US\$ and as a percentage of merchandise exports), 2009-2010	1,835 (93%)	Commodity exports (in millions of US\$ and as a percentage of merchandise exports), 2009-2010	212 (88%)
Commodity exports (as a percentage of GDP), 2009-2010	20	Commodity exports (as a percentage of GDP), 2009-2010	4
Exports by commodity groups (as a percentage of total commodity exports), 2009-2010		Exports by commodity groups (as a percentage of total commodity exports), 2009-2010	
All food items	22	All food items	70
Agricultural raw materials	5	Agricultural raw materials	1
Fuels	21	Fuels	1
Ores, metals, precious stones and non-monetary gold	52	Ores, metals, precious stones and non-monetary gold	29
Three leading commodity exports (as a percentage of commodity exports), 2009-2010	63	Three leading commodity exports (as a percentage of commodity exports), 2009-2010	83
(684) Aluminium	46	(074) Tea and mate	30
(351) Electric current	11	(287) Ores and concentrates of base metals, n.e.s.	28
(121) Tobacco, unmanufactured; tobacco refuse	6	(071) Coffee and coffee substitutes	25
Leading destination markets for commodity exports (as a percentage of commodity exports), 2009-2010	87	Leading destination markets for commodity exports (as a percentage of commodity exports), 2009-2010	77
EU (27), South Africa, China, Zimbabwe, India	55/19/7/3/3	Kenya, EU (27), China, Democratic Republic of the Congo, United States	35/16/10/10/6
Export concentration ratio	(2000) 0.3021 (2010) 0.4840	Export concentration ratio	(2000) 0.4354 (2010) 0.3582
Membership in international commodity bodies	INBAR, ICAC, ISO	Membership in international commodity bodies	INBAR
FOOD SECURITY		FOOD SECURITY	
Commodity import value (in millions of US\$ and as a percentage of merchandise import value), 2009-2010	1,253 (38%)	Commodity import value (in millions of US\$ and as a percentage of merchandise import value), 2009-2010	360 (26%)
Net food imports (in millions of US\$), 2010	149	Net food imports (in millions of US\$), 2010	70
MDG 1.1: Percentage of population below 1US\$ (PPP) per day, 1990/92 and 2007/09	81 - 60	MDG 1.1: Percentage of population below 1US\$ (PPP) per day, 1990/92 and 2007/09	77 - 77
MDG 1.9: Percentage of the population undernourished, 1991 and 2007	59 - 38	MDG 1.9: Percentage of the population undernourished, 1991 and 2007	44 - 32



SEYCHELLES		SOMALIA	
GENERAL INFORMATION		GENERAL INFORMATION	
Total area (square kilometres), 2009	460	Total area (square kilometres), 2009	637,660
Agricultural area (as a percentage of total area), 2009	7	Agricultural area (as a percentage of total area), 2009	69
Population (1,000 inhabitants), 2010	87	Population (1,000 inhabitants), 2010	9,331
Labour force (1,000 workers), 2010	40	Labour force (1,000 workers), 2010	3,719
Women in labour force (as a percentage of total labour force), 2010	48	Women in labour force (as a percentage of total labour force), 2010	39
Labour force in agriculture (as a percentage of total labour force), 2010	75	Labour force in agriculture (as a percentage of total labour force), 2010	66
Women in agriculture (as a percentage of labour force in agriculture), 2010	50	Women in agriculture (as a percentage of labour force in agriculture), 2010	46
Gross Domestic Product (GDP) (in millions of US\$), 2010	935	Gross Domestic Product (GDP) (in millions of US\$), 2009	2,012
GDP by economic activity (as a percentage of GDP), 2009 (agriculture / industry / services)	3/16/81	GDP by economic activity (as a percentage of GDP), 2009 (agriculture / industry / services)	60/7/32
COMMODITY EXPORT DEPENDENCE		COMMODITY EXPORT DEPENDENCE	
Commodity exports (in millions of US\$ and as a percentage of merchandise exports), 2009-2010	352 (88%)	Commodity exports (in millions of US\$ and as a percentage of merchandise exports), 2009-2010	430 (99%)
Commodity exports (as a percentage of GDP), 2009-2010	41	Commodity exports (as a percentage of GDP), 2009-2010	18
Exports by commodity groups (as a percentage of total commodity exports), 2009-2010		Exports by commodity groups (as a percentage of total commodity exports), 2009-2010	
All food items	86	All food items	46
Agricultural raw materials	–	Agricultural raw materials	21
Fuels	13	Fuels	–
Ores, metals, precious stones and non-monetary gold	–	Ores, metals, precious stones and non-monetary gold	32
Three leading commodity exports (as a percentage of commodity exports), 2009-2010	95	Three leading commodity exports (as a percentage of commodity exports), 2009-2010	85
(03) Fishery products	82	(001) Live animals other than animals of division 03	35
(334) Petroleum oils or bituminous minerals > 70 % oil	12	(971) Gold, non-monetary (excluding gold ores and concentrates)	32
(421) Fixed vegetable fats & oils, crude, refined, fractio.	1	(24+25) Forestry products	18
Leading destination markets for commodity exports (as a percentage of commodity exports), 2009-2010	93	Leading destination markets for commodity exports (as a percentage of commodity exports), 2009-2010	96
EU (27), Japan, Thailand, Madagascar, Mauritius	72/11/5/3/2	United Arab Emirates, Oman, Yemen, Saudi Arabia, Bahrain	60/22/6/6/2
Export concentration ratio	(2000) 0.6351 (2010) 0.4447	Export concentration ratio	(2000) 0.6513 (2010) 0.4228
Membership in international commodity bodies	–	Membership in international commodity bodies	–
FOOD SECURITY		FOOD SECURITY	
Commodity import value (in millions of US\$ and as a percentage of merchandise import value), 2009-2010	425 (49%)	Commodity import value (in millions of US\$ and as a percentage of merchandise import value), 2009-2010	657 (70%)
Net food imports (in millions of US\$), 2010	- 122	Net food imports (in millions of US\$), 2010	473
MDG 1.1: Percentage of population below 1US\$ (PPP) per day, 1990/92 and 2007/09	n.a. - 0.3	MDG 1.1: Percentage of population below 1US\$ (PPP) per day, 1990/92 and 2007/09	n.a.
MDG 1.9: Percentage of the population undernourished, 1991 and 2007	11 - 8	MDG 1.9: Percentage of the population undernourished, 1991 and 2007	n.a.



UGANDA		UNITED REPUBLIC OF TANZANIA	
GENERAL INFORMATION		GENERAL INFORMATION	
Total area (square kilometres), 2009	241,550	Total area (square kilometres), 2009	947,300
Agricultural area (as a percentage of total area), 2009	58	Agricultural area (as a percentage of total area), 2009	37
Population (1,000 inhabitants), 2010	33,425	Population (1,000 inhabitants), 2010	44,841
Labour force (1,000 workers), 2010	14,731	Labour force (1,000 workers), 2010	22,241
Women in labour force (as a percentage of total labour force), 2010	48	Women in labour force (as a percentage of total labour force), 2010	50
Labour force in agriculture (as a percentage of total labour force), 2010	75	Labour force in agriculture (as a percentage of total labour force), 2010	76
Women in agriculture (as a percentage of labour force in agriculture), 2010	50	Women in agriculture (as a percentage of labour force in agriculture), 2010	55
Gross Domestic Product (GDP) (in millions of US\$), 2010	18,372	Gross Domestic Product (GDP) (in millions of US\$), 2010	24,568
GDP by economic activity (as a percentage of GDP), 2009 (agriculture / industry / services)	23/25/52	GDP by economic activity (as a percentage of GDP), 2009 (agriculture / industry / services)	30/23/47
COMMODITY EXPORT DEPENDENCE		COMMODITY EXPORT DEPENDENCE	
Commodity exports (in millions of US\$ and as a percentage of merchandise exports), 2009-2010	1,564 (70%)	Commodity exports (in millions of US\$ and as a percentage of merchandise exports), 2009-2010	2,874 (83%)
Commodity exports (as a percentage of GDP), 2009-2010	9	Commodity exports (as a percentage of GDP), 2009-2010	12
Exports by commodity groups (as a percentage of total commodity exports), 2009-2010		Exports by commodity groups (as a percentage of total commodity exports), 2009-2010	
All food items	82	All food items	41
Agricultural raw materials	9	Agricultural raw materials	9
Fuels	2	Fuels	3
Ores, metals, precious stones and non-monetary gold	7	Ores, metals, precious stones and non-monetary gold	47
Three leading commodity exports (as a percentage of commodity exports), 2009-2010	50	Three leading commodity exports (as a percentage of commodity exports), 2009-2010	43
(071) Coffee and coffee substitutes	30	(971) Gold, non-monetary (excluding gold ores and concentrates)	22
(03) Fishery products	13	(289) Ores & concentrates of precious metals; waste, scrap	14
(121) Tobacco, unmanufactured; tobacco refuse	7	(03) Fishery products	7
Leading destination markets for commodity exports (as a percentage of commodity exports), 2009-2010	72	Leading destination markets for commodity exports (as a percentage of commodity exports), 2009-2010	67
EU (27), Sudan, Kenya, Democratic Republic of the Congo, Rwanda	42/11/10/5/4	EU (27), China, India, United Arab Emirates, Switzerland	21/17/11/9/9
Export concentration ratio	(2000) 0.3727 (2010) 0.2119	Export concentration ratio	(2000) 0.2188 (2010) 0.1981
Membership in international commodity bodies	INBAR, ICO, ICAC, ISO	Membership in international commodity bodies	INBAR, ICO, ICAC, ISO
FOOD SECURITY		FOOD SECURITY	
Commodity import value (in millions of US\$ and as a percentage of merchandise import value), 2009-2010	1,289 (29%)	Commodity import value (in millions of US\$ and as a percentage of merchandise import value), 2009-2010	2,377 (33%)
Net food imports (in millions of US\$), 2010	- 810	Net food imports (in millions of US\$), 2010	- 504
MDG 1.1: Percentage of population below 1US\$ (PPP) per day, 1990/92 and 2007/09	70 - 29	MDG 1.1: Percentage of population below 1US\$ (PPP) per day, 1990/92 and 2007/09	73 - 68
MDG 1.9: Percentage of the population undernourished, 1991 and 2007	19 - 22	MDG 1.9: Percentage of the population undernourished, 1991 and 2007	29 - 34



ZAMBIA		ZIMBABWE	
GENERAL INFORMATION		GENERAL INFORMATION	
Total area (square kilometres), 2009	752,610	Total area (square kilometres), 2009	390,760
Agricultural area (as a percentage of total area), 2009	31	Agricultural area (as a percentage of total area), 2009	42
Population (1,000 inhabitants), 2010	13,089	Population (1,000 inhabitants), 2010	12,571
Labour force (1,000 workers), 2010	5,083	Labour force (1,000 workers), 2010	5,537
Women in labour force (as a percentage of total labour force), 2010	43	Women in labour force (as a percentage of total labour force), 2010	43
Labour force in agriculture (as a percentage of total labour force), 2010	63	Labour force in agriculture (as a percentage of total labour force), 2010	56
Women in agriculture (as a percentage of labour force in agriculture), 2010	46	Women in agriculture (as a percentage of labour force in agriculture), 2010	52
Gross Domestic Product (GDP) (in millions of US\$), 2010	15,834	Gross Domestic Product (GDP) (in millions of US\$), 2009	4,056
GDP by economic activity (as a percentage of GDP), 2009 (agriculture / industry / services)	21/33/46	GDP by economic activity (as a percentage of GDP), 2009 (agriculture / industry / services)	17/21/62
COMMODITY EXPORT DEPENDENCE		COMMODITY EXPORT DEPENDENCE	
Commodity exports (in millions of US\$ and as a percentage of merchandise exports), 2009-2010	5,069 (89%)	Commodity exports (in millions of US\$ and as a percentage of merchandise exports), 2009-2010	1,814 (75%)
Commodity exports (as a percentage of GDP), 2009-2010	35	Commodity exports (as a percentage of GDP), 2008-2009	42
Exports by commodity groups (as a percentage of total commodity exports), 2009-2010		Exports by commodity groups (as a percentage of total commodity exports), 2009-2010	
All food items	9	All food items	40
Agricultural raw materials	2	Agricultural raw materials	23
Fuels	1	Fuels	10
Ores, metals, precious stones and non-monetary gold	88	Ores, metals, precious stones and non-monetary gold	26
Three leading commodity exports (as a percentage of commodity exports), 2009-2010	87	Three leading commodity exports (as a percentage of commodity exports), 2009-2010	41
(682) Copper	80	(284) Nickel ores & concentrates; nickel mattes, etc.	17
(283) Copper ores and concentrates; copper mattes, cemen	5	(121) Tobacco, unmanufactured; tobacco refuse	15
(287) Ores and concentrates of base metals, n.e.s.	2	(263) Cotton	9
Leading destination markets for commodity exports (as a percentage of commodity exports), 2009-2010	79	Leading destination markets for commodity exports (as a percentage of commodity exports), 2009-2010	72
Switzerland, China, South Africa, EU (27), Republic of Korea	31/31/8/5/4	South Africa, EU (27), Democratic Republic of the Congo, China, Botswana	29/22/11/7/3
Export concentration ratio	(2000) 0.5147 (2010) 0.7374	Export concentration ratio	(2000) 0.2659 (2010) 0.1690
Membership in international commodity bodies	ICO, ICAC, ISO	Membership in international commodity bodies	ICAC, ISO
FOOD SECURITY		FOOD SECURITY	
Commodity import value (in millions of US\$ and as a percentage of merchandise import value), 2009-2010	1,672 (37%)	Commodity import value (in millions of US\$ and as a percentage of merchandise import value), 2009-2010	1,449 (45%)
Net food imports (in millions of US\$), 2010	- 260	Net food imports (in millions of US\$), 2010	89
MDG 1.1: Percentage of population below 1US\$ (PPP) per day, 1990/92 and 2007/09	63 - 64	MDG 1.1: Percentage of population below 1US\$ (PPP) per day, 1990/92 and 2007/09	n.a.
MDG 1.9: Percentage of the population undernourished, 1991 and 2007	35 - 44	MDG 1.9: Percentage of the population undernourished, 1991 and 2007	40 - 30