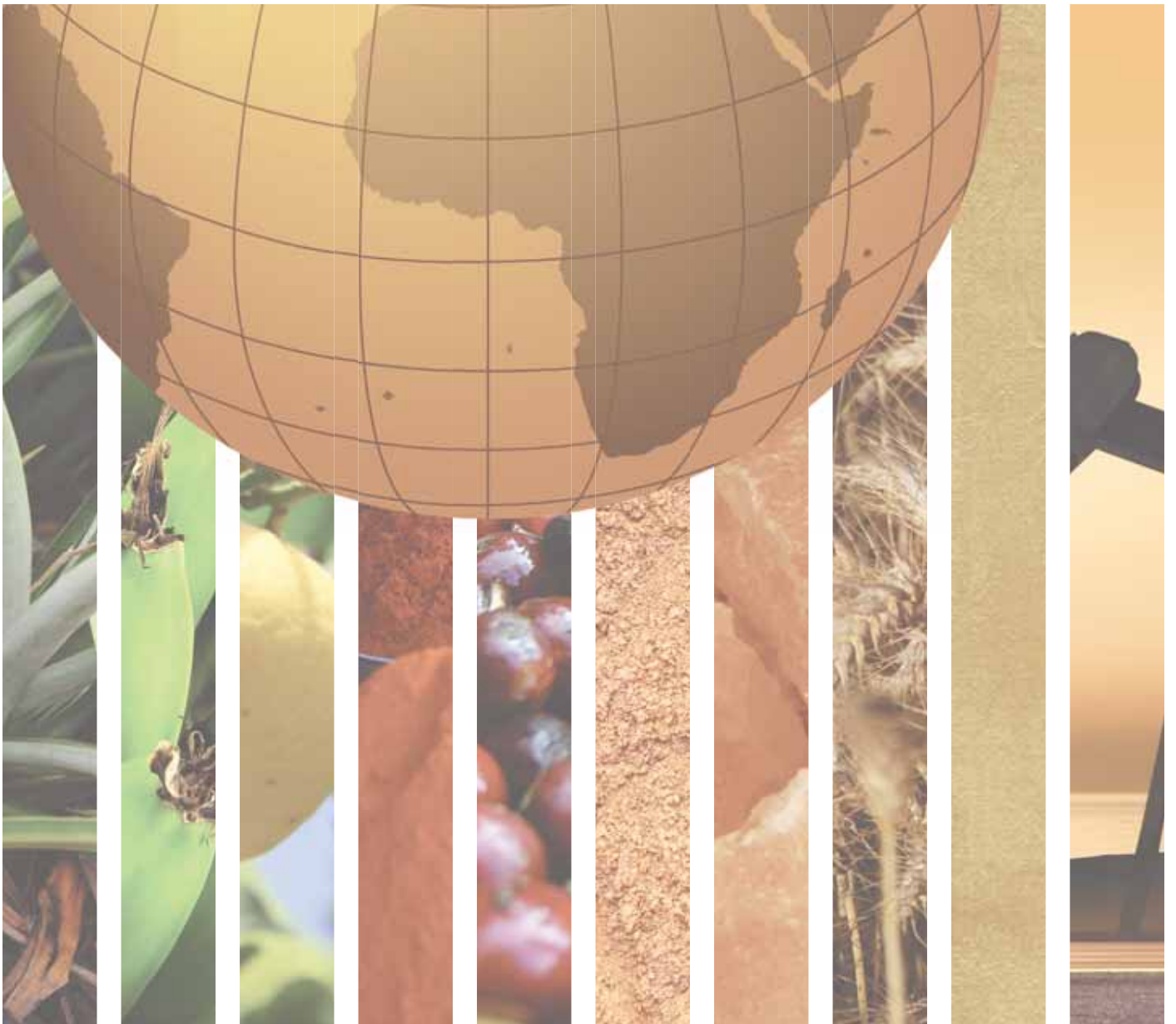


MIDDLE AFRICA





ANGOLA		CAMEROON	
GENERAL INFORMATION		GENERAL INFORMATION	
Total area (square kilometres), 2009	1,246,700	Total area (square kilometres), 2009	475,440
Agricultural area (as a percentage of total area), 2009	47	Agricultural area (as a percentage of total area), 2009	20
Population (1,000 inhabitants), 2010	19,082	Population (1,000 inhabitants), 2010	19,599
Labour force (1,000 workers), 2010	8,489	Labour force (1,000 workers), 2010	7,482
Women in labour force (as a percentage of total labour force), 2010	47	Women in labour force (as a percentage of total labour force), 2010	42
Labour force in agriculture (as a percentage of total labour force), 2010	69	Labour force in agriculture (as a percentage of total labour force), 2010	48
Women in agriculture (as a percentage of labour force in agriculture), 2010	55	Women in agriculture (as a percentage of labour force in agriculture), 2010	47
Gross Domestic Product (GDP) (in millions of US\$), 2010	39,545	Gross Domestic Product (GDP) (in millions of US\$), 2010	22,423
GDP by economic activity (as a percentage of GDP), 2009 (agriculture / industry / services)	9/71/21	GDP by economic activity (as a percentage of GDP), 2009 (agriculture / industry / services)	22/31/47
COMMODITY EXPORT DEPENDENCE		COMMODITY EXPORT DEPENDENCE	
Commodity exports (in millions of US\$ and as a percentage of merchandise exports), 2009-2010	44,502 (100%)	Commodity exports (in millions of US\$ and as a percentage of merchandise exports), 2009-2010	3,314 (89%)
Commodity exports (as a percentage of GDP), 2009-2010	n.r.	Commodity exports (as a percentage of GDP), 2009-2010	15
Exports by commodity groups (as a percentage of total commodity exports), 2009-2010		Exports by commodity groups (as a percentage of total commodity exports), 2009-2010	
All food items	–	All food items	26
Agricultural raw materials	–	Agricultural raw materials	17
Fuels	99	Fuels	53
Ores, metals, precious stones and non-monetary gold	1	Ores, metals, precious stones and non-monetary gold	4
Three leading commodity exports (as a percentage of commodity exports), 2009-2010	99	Three leading commodity exports (as a percentage of commodity exports), 2009-2010	69
(333) Petroleum oils, oils from bitumin. materials, crude	97	(333) Petroleum oils, oils from bitumin. materials, crude	41
(971) Pearls, precious & semi-precious stones	1	(072) Cocoa	16
(334) Petroleum oils or bituminous minerals > 70 % oil	1	(334) Petroleum oils or bituminous minerals > 70 % oil	12
Leading destination markets for commodity exports (as a percentage of commodity exports), 2009-2010	92	Leading destination markets for commodity exports (as a percentage of commodity exports), 2009-2010	86
China, United States, EU (27), India, South Africa	45/27/12/4/4	EU (27), China, United States, Chad, India	64/9/7/4/2
Export concentration ratio	(2000) 0.8827 (2010) 0.9704	Export concentration ratio	(2000) 0.4406 (2010) 0.3939
Membership in international commodity bodies	ICO	Membership in international commodity bodies	INBAR, ICCO, IRSG, ICAC, ISO, ITTO
FOOD SECURITY		FOOD SECURITY	
Commodity import value (in millions of US\$ and as a percentage of merchandise import value), 2009-2010	5,031 (21%)	Commodity import value (in millions of US\$ and as a percentage of merchandise import value), 2009-2010	2,247 (47%)
Net food imports (in millions of US\$), 2010	4,425	Net food imports (in millions of US\$), 2010	- 75
MDG 1.1: Percentage of population below 1US\$ (PPP) per day, 1990/92 and 2007/09	n.a. - 54	MDG 1.1: Percentage of population below 1US\$ (PPP) per day, 1990/92 and 2007/09	52 - 10
MDG 1.9: Percentage of the population undernourished, 1991 and 2007	67 - 41	MDG 1.9: Percentage of the population undernourished, 1991 and 2007	33 - 22



CENTRAL AFRICAN REPUBLIC		CHAD	
GENERAL INFORMATION		GENERAL INFORMATION	
Total area (square kilometres), 2009	622,980	Total area (square kilometres), 2009	1,284,000
Agricultural area (as a percentage of total area), 2009	8	Agricultural area (as a percentage of total area), 2009	38
Population (1,000 inhabitants), 2010	4,401	Population (1,000 inhabitants), 2010	11,227
Labour force (1,000 workers), 2010	1,983	Labour force (1,000 workers), 2010	4,511
Women in labour force (as a percentage of total labour force), 2010	45	Women in labour force (as a percentage of total labour force), 2010	49
Labour force in agriculture (as a percentage of total labour force), 2010	63	Labour force in agriculture (as a percentage of total labour force), 2010	66
Women in agriculture (as a percentage of labour force in agriculture), 2010	50	Women in agriculture (as a percentage of labour force in agriculture), 2010	57
Gross Domestic Product (GDP) (in millions of US\$), 2010	2,013	Gross Domestic Product (GDP) (in millions of US\$), 2010	7,711
GDP by economic activity (as a percentage of GDP), 2009 (agriculture / industry / services)	58/15/26	GDP by economic activity (as a percentage of GDP), 2009 (agriculture / industry / services)	21/54/26
COMMODITY EXPORT DEPENDENCE		COMMODITY EXPORT DEPENDENCE	
Commodity exports (in millions of US\$ and as a percentage of merchandise exports), 2009-2010	118 (90%)	Commodity exports (in millions of US\$ and as a percentage of merchandise exports), 2009-2010	2,881 (96%)
Commodity exports (as a percentage of GDP), 2009-2010	6	Commodity exports (as a percentage of GDP), 2008-2009	40
Exports by commodity groups (as a percentage of total commodity exports), 2009-2010		Exports by commodity groups (as a percentage of total commodity exports), 2009-2010	
All food items	7	All food items	–
Agricultural raw materials	49	Agricultural raw materials	3
Fuels	–	Fuels	97
Ores, metals, precious stones and non-monetary gold	44	Ores, metals, precious stones and non-monetary gold	–
Three leading commodity exports (as a percentage of commodity exports), 2009-2010	83	Three leading commodity exports (as a percentage of commodity exports), 2009-2010	99
(24+25) Forestry products	41	(333) Petroleum oils, oils from bitumin. materials, crude	89
(971) Pearls, precious & semi-precious stones	27	(334) Petroleum oils or bituminous minerals > 70 % oil	8
(277) Natural abrasives, n.e.s. (incl. industri. diamonds)	15	(263) Cotton	2
Leading destination markets for commodity exports (as a percentage of commodity exports), 2009-2010	88	Leading destination markets for commodity exports (as a percentage of commodity exports), 2009-2010	99
EU (27), China, Morocco, Indonesia, Turkey	56/13/9/7/3	United States, China, EU (27)	82/11/6
Export concentration ratio	(2000) 0.6799 (2010) 0.3300	Export concentration ratio	(2000) 0.7313 (2010) 0.8099
Membership in international commodity bodies	ICO, ITTO	Membership in international commodity bodies	ICAC, ISO
FOOD SECURITY		FOOD SECURITY	
Commodity import value (in millions of US\$ and as a percentage of merchandise import value), 2009-2010	136 (45%)	Commodity import value (in millions of US\$ and as a percentage of merchandise import value), 2009-2010	581 (24%)
Net food imports (in millions of US\$), 2010	68	Net food imports (in millions of US\$), 2010	376
MDG 1.1: Percentage of population below 1US\$ (PPP) per day, 1990/92 and 2007/09	83 - 63	MDG 1.1: Percentage of population below 1US\$ (PPP) per day, 1990/92 and 2007/09	n.a. - 62
MDG 1.9: Percentage of the population undernourished, 1991 and 2007	44 - 40	MDG 1.9: Percentage of the population undernourished, 1991 and 2007	60 - 39



CONGO		DEMOCRATIC REPUBLIC OF THE CONGO	
GENERAL INFORMATION		GENERAL INFORMATION	
Total area (square kilometres), 2009	342,000	Total area (square kilometres), 2009	2,344,860
Agricultural area (as a percentage of total area), 2009	31	Agricultural area (as a percentage of total area), 2009	10
Population (1,000 inhabitants), 2010	4,043	Population (1,000 inhabitants), 2010	65,966
Labour force (1,000 workers), 2010	1,640	Labour force (1,000 workers), 2010	24,808
Women in labour force (as a percentage of total labour force), 2010	40	Women in labour force (as a percentage of total labour force), 2010	38
Labour force in agriculture (as a percentage of total labour force), 2010	32	Labour force in agriculture (as a percentage of total labour force), 2010	57
Women in agriculture (as a percentage of labour force in agriculture), 2010	56	Women in agriculture (as a percentage of labour force in agriculture), 2010	49
Gross Domestic Product (GDP) (in millions of US\$), 2010	11,957	Gross Domestic Product (GDP) (in millions of US\$), 2009	11,204
GDP by economic activity (as a percentage of GDP), 2009 (agriculture / industry / services)	4/74/22	GDP by economic activity (as a percentage of GDP), 2009 (agriculture / industry / services)	42/28/31
COMMODITY EXPORT DEPENDENCE		COMMODITY EXPORT DEPENDENCE	
Commodity exports (in millions of US\$ and as a percentage of merchandise exports), 2009-2010	6,922 (99%)	Commodity exports (in millions of US\$ and as a percentage of merchandise exports), 2009-2010	4,212 (96%)
Commodity exports (as a percentage of GDP), 2009-2010	63	Commodity exports (as a percentage of GDP), 2008-2009	33
Exports by commodity groups (as a percentage of total commodity exports), 2009-2010		Exports by commodity groups (as a percentage of total commodity exports), 2009-2010	
All food items	1	All food items	1
Agricultural raw materials	4	Agricultural raw materials	3
Fuels	86	Fuels	16
Ores, metals, precious stones and non-monetary gold	9	Ores, metals, precious stones and non-monetary gold	80
Three leading commodity exports (as a percentage of commodity exports), 2009-2010	88	Three leading commodity exports (as a percentage of commodity exports), 2009-2010	63
(333) Petroleum oils, oils from bitumin. materials, crude	79	(682) Copper	28
(334) Petroleum oils or bituminous minerals > 70 % oil	5	(287) Ores and concentrates of base metals, n.e.s.	21
(24+25) Forestry products	4	(283) Copper ores and concentrates; copper mattes, cemen	14
Leading destination markets for commodity exports (as a percentage of commodity exports), 2009-2010	94	Leading destination markets for commodity exports (as a percentage of commodity exports), 2009-2010	95
United States, China, EU (27), India, Taiwan Province of China	39/29/17/6/3	China, Zambia, EU (27), United States	48/21/14/12
Export concentration ratio	(2000) 0.6765 (2010) 0.7490	Export concentration ratio	(2000) 0.5972 (2010) 0.3721
Membership in international commodity bodies	ISO, ITTO	Membership in international commodity bodies	ITTO
FOOD SECURITY		FOOD SECURITY	
Commodity import value (in millions of US\$ and as a percentage of merchandise import value), 2009-2010	780 (26%)	Commodity import value (in millions of US\$ and as a percentage of merchandise import value), 2009-2010	1,500 (37%)
Net food imports (in millions of US\$), 2010	467	Net food imports (in millions of US\$), 2010	877
MDG 1.1: Percentage of population below 1US\$ (PPP) per day, 1990/92 and 2007/09	n.a. - 54	MDG 1.1: Percentage of population below 1US\$ (PPP) per day, 1990/92 and 2007/09	n.a. - 59
MDG 1.9: Percentage of the population undernourished, 1991 and 2007	42 - 13	MDG 1.9: Percentage of the population undernourished, 1991 and 2007	n.a.



EQUATORIAL GUINEA		GABON	
GENERAL INFORMATION		GENERAL INFORMATION	
Total area (square kilometres), 2009	28,050	Total area (square kilometres), 2009	267,670
Agricultural area (as a percentage of total area), 2009	11	Agricultural area (as a percentage of total area), 2009	19
Population (1,000 inhabitants), 2010	700	Population (1,000 inhabitants), 2010	1,505
Labour force (1,000 workers), 2010	274	Labour force (1,000 workers), 2010	711
Women in labour force (as a percentage of total labour force), 2010	31	Women in labour force (as a percentage of total labour force), 2010	44
Labour force in agriculture (as a percentage of total labour force), 2010	64	Labour force in agriculture (as a percentage of total labour force), 2010	26
Women in agriculture (as a percentage of labour force in agriculture), 2010	42	Women in agriculture (as a percentage of labour force in agriculture), 2010	45
Gross Domestic Product (GDP) (in millions of US\$), 2010	14,042	Gross Domestic Product (GDP) (in millions of US\$), 2010	13,443
GDP by economic activity (as a percentage of GDP), 2009 (agriculture / industry / services)	3/93/4	GDP by economic activity (as a percentage of GDP), 2009 (agriculture / industry / services)	5/62/34
COMMODITY EXPORT DEPENDENCE		COMMODITY EXPORT DEPENDENCE	
Commodity exports (in millions of US\$ and as a percentage of merchandise exports), 2009-2010	9,268 (98%)	Commodity exports (in millions of US\$ and as a percentage of merchandise exports), 2009-2010	6,580 (96%)
Commodity exports (as a percentage of GDP), 2009-2010	72	Commodity exports (as a percentage of GDP), 2009-2010	53
Exports by commodity groups (as a percentage of total commodity exports), 2009-2010		Exports by commodity groups (as a percentage of total commodity exports), 2009-2010	
All food items	–	All food items	1
Agricultural raw materials	1	Agricultural raw materials	13
Fuels	99	Fuels	78
Ores, metals, precious stones and non-monetary gold	-	Ores, metals, precious stones and non-monetary gold	9
Three leading commodity exports (as a percentage of commodity exports), 2009-2010	99	Three leading commodity exports (as a percentage of commodity exports), 2009-2010	97
(333) Petroleum oils, oils from bitumin. materials, crude	81	(333) Petroleum oils, oils from bitumin. materials, crude	77
(343) Natural gas, whether or not liquefied	15	(24+25) Forestry products	12
(342) Liquefied propane and butane	3	(287) Ores and concentrates of base metals, n.e.s.	8
Leading destination markets for commodity exports (as a percentage of commodity exports), 2009-2010	84	Leading destination markets for commodity exports (as a percentage of commodity exports), 2009-2010	83
United States, EU (27), China, Canada, Japan	33/25/11/8/7	United States, China, EU (27), Trinidad and Tobago, Thailand	49/14/12/4/4
Export concentration ratio	(2000) 0.7990 (2010) 0.8174	Export concentration ratio	(2000) 0.7346 (2010) 0.7649
Membership in international commodity bodies	–	Membership in international commodity bodies	ICCO, ICO, ITTO
FOOD SECURITY		FOOD SECURITY	
Commodity import value (in millions of US\$ and as a percentage of merchandise import value), 2009-2010	2,269 (42%)	Commodity import value (in millions of US\$ and as a percentage of merchandise import value), 2009-2010	599 (24%)
Net food imports (in millions of US\$), 2010	255	Net food imports (in millions of US\$), 2010	376
MDG 1.1: Percentage of population below 1US\$ (PPP) per day, 1990/92 and 2007/09	n.a.	MDG 1.1: Percentage of population below 1US\$ (PPP) per day, 1990/92 and 2007/09	n.a. - 5
MDG 1.9: Percentage of the population undernourished, 1991 and 2007	n.a.	MDG 1.9: Percentage of the population undernourished, 1991 and 2007	6 - 5


SAO TOME AND PRINCIPE
GENERAL INFORMATION

Total area (square kilometres), 2009	960
Agricultural area (as a percentage of total area), 2009	58
Population (1,000 inhabitants), 2010	165
Labour force (1,000 workers), 2010	57
Women in labour force (as a percentage of total labour force), 2010	40
Labour force in agriculture (as a percentage of total labour force), 2010	56
Women in agriculture (as a percentage of labour force in agriculture), 2010	50
Gross Domestic Product (GDP) (in millions of US\$), 2010	209
GDP by economic activity (as a percentage of GDP), 2009 (agriculture / industry / services)	17/21/62

COMMODITY EXPORT DEPENDENCE

Commodity exports (in millions of US\$ and as a percentage of merchandise exports), 2009-2010	3.4 (47%)
Commodity exports (as a percentage of GDP), 2009-2010	2
Exports by commodity groups (as a percentage of total commodity exports), 2009-2010	
All food items	93
Agricultural raw materials	1
Fuels	4
Ores, metals, precious stones and non-monetary gold	2
Three leading commodity exports (as a percentage of commodity exports), 2009-2010	92
(072) Cocoa	86
(334) Petroleum oils or bituminous minerals > 70 % oil	4
(057) Fruits and nuts (excluding oil nuts), fresh or dried	2
Leading destination markets for commodity exports (as a percentage of commodity exports), 2009-2010	95
EU (27), Angola, Nigeria	88/4/3
Export concentration ratio	(2000) 0.3881 (2010) 0.4436
Membership in international commodity bodies	–

FOOD SECURITY

Commodity import value (in millions of US\$ and as a percentage of merchandise import value), 2009-2010	54 (51%)
Net food imports (in millions of US\$), 2010	31
MDG 1.1: Percentage of population below 1US\$ (PPP) per day, 1990/92 and 2007/09	n.a. - 29
MDG 1.9: Percentage of the population undernourished, 1991 and 2007	14 - 5