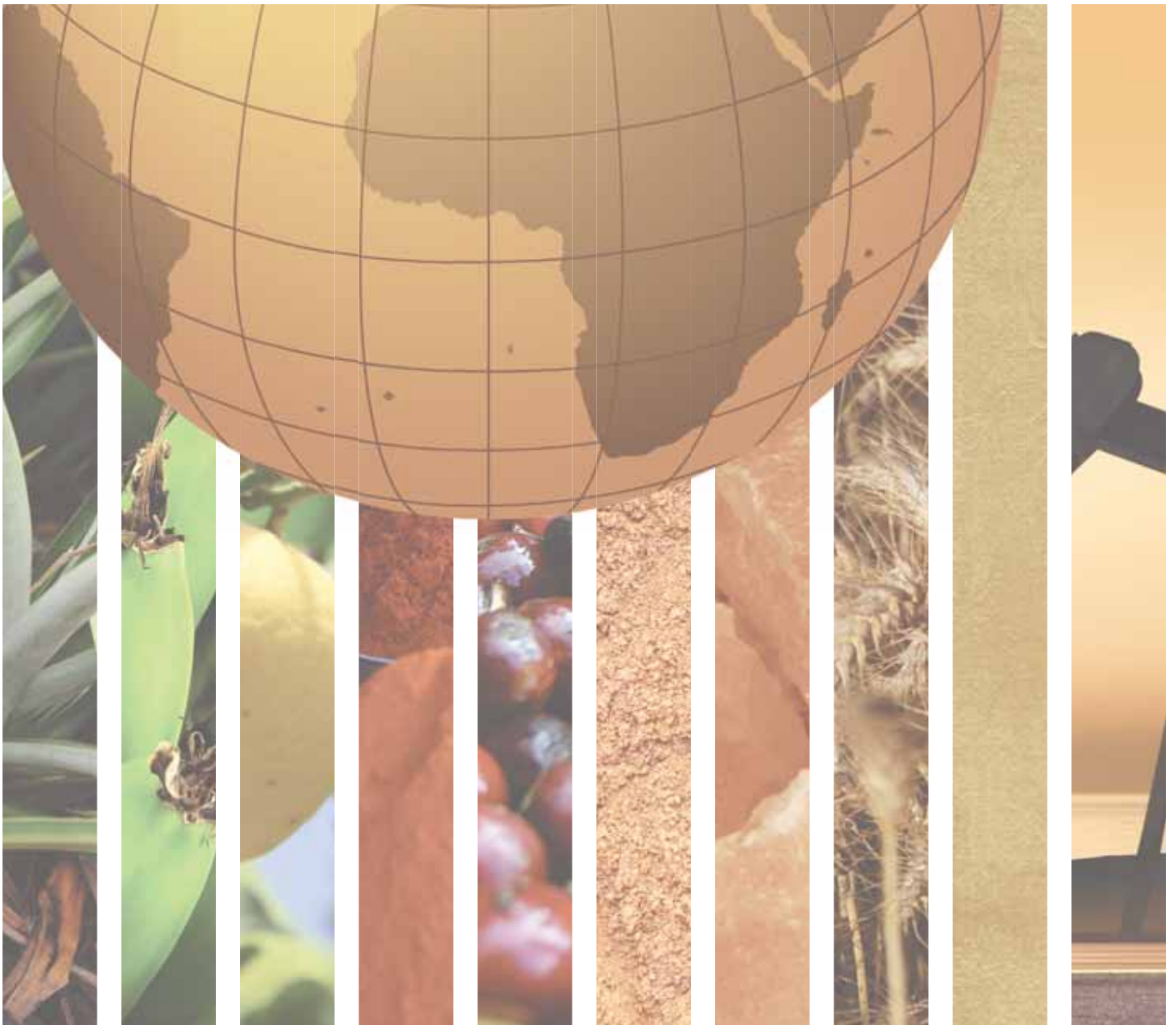


SOUTHERN AFRICA





BOTSWANA		LESOTHO	
GENERAL INFORMATION		GENERAL INFORMATION	
Total area (square kilometres), 2009	581,730	Total area (square kilometres), 2009	30,360
Agricultural area (as a percentage of total area), 2009	44	Agricultural area (as a percentage of total area), 2009	77
Population (1,000 inhabitants), 2010	2,007	Population (1,000 inhabitants), 2010	2,171
Labour force (1,000 workers), 2010	753	Labour force (1,000 workers), 2010	933
Women in labour force (as a percentage of total labour force), 2010	43	Women in labour force (as a percentage of total labour force), 2010	50
Labour force in agriculture (as a percentage of total labour force), 2010	42	Labour force in agriculture (as a percentage of total labour force), 2010	39
Women in agriculture (as a percentage of labour force in agriculture), 2010	56	Women in agriculture (as a percentage of labour force in agriculture), 2010	66
Gross Domestic Product (GDP) (in millions of US\$), 2010	14,015	Gross Domestic Product (GDP) (in millions of US\$), 2010	1,997
GDP by economic activity (as a percentage of GDP), 2009 (agriculture / industry / services)	3/40/57	GDP by economic activity (as a percentage of GDP), 2009 (agriculture / industry / services)	8/34/57
COMMODITY EXPORT DEPENDENCE		COMMODITY EXPORT DEPENDENCE	
Commodity exports (in millions of US\$ and as a percentage of merchandise exports), 2009-2010	3,410 (84%)	Commodity exports (in millions of US\$ and as a percentage of merchandise exports), 2009-2010	233 (31%)
Commodity exports (as a percentage of GDP), 2009-2010	27	Commodity exports (as a percentage of GDP), 2009-2010	13
Exports by commodity groups (as a percentage of total commodity exports), 2009-2010		Exports by commodity groups (as a percentage of total commodity exports), 2009-2010	
All food items	7	All food items	1
Agricultural raw materials	–	Agricultural raw materials	–
Fuels	1	Fuels	–
Ores, metals, precious stones and non-monetary gold	92	Ores, metals, precious stones and non-monetary gold	99
Three leading commodity exports (as a percentage of commodity exports), 2009-2010	93	Three leading commodity exports (as a percentage of commodity exports), 2009-2010	99
(667) Pearls, precious & semi-precious stones	75	(667) Pearls, precious & semi-precious stones	99
(284) Nickel ores & concentrates; nickel mattes, etc.	14		
(011) Meat of bovine animals, fresh, chilled or frozen	4		
Leading destination markets for commodity exports (as a percentage of commodity exports), 2009-2010	84	Leading destination markets for commodity exports (as a percentage of commodity exports), 2009-2010	100
EU (27), South Africa, Israel, Zimbabwe, China	68/6/5/3/2	EU (27), South Africa	82/18
Export concentration ratio	(2000) 0.8092 (2010) 0.6720	Export concentration ratio	(2000) 0.4442 (2010) 0.4820
Membership in international commodity bodies	–	Membership in international commodity bodies	–
FOOD SECURITY		FOOD SECURITY	
Commodity import value (in millions of US\$ and as a percentage of merchandise import value), 2009-2010	661 (33%)	Commodity import value (in millions of US\$ and as a percentage of merchandise import value), 2009-2010	196 (58%)
Net food imports (in millions of US\$), 2010	422	Net food imports (in millions of US\$), 2010	220
MDG 1.1: Percentage of population below 1US\$ (PPP) per day, 1990/92 and 2007/09	31 - n.a.	MDG 1.1: Percentage of population below 1US\$ (PPP) per day, 1990/92 and 2007/09	56 - 43
MDG 1.9: Percentage of the population undernourished, 1991 and 2007	19 - 25	MDG 1.9: Percentage of the population undernourished, 1991 and 2007	15 - 14



NAMIBIA		SOUTH AFRICA	
GENERAL INFORMATION		GENERAL INFORMATION	
Total area (square kilometres), 2009	824,290	Total area (square kilometres), 2009	1,219,090
Agricultural area (as a percentage of total area), 2009	47	Agricultural area (as a percentage of total area), 2009	81
Population (1,000 inhabitants), 2010	2,283	Population (1,000 inhabitants), 2010	50,133
Labour force (1,000 workers), 2010	795	Labour force (1,000 workers), 2010	18,357
Women in labour force (as a percentage of total labour force), 2010	46	Women in labour force (as a percentage of total labour force), 2010	45
Labour force in agriculture (as a percentage of total labour force), 2010	34	Labour force in agriculture (as a percentage of total labour force), 2010	6
Women in agriculture (as a percentage of labour force in agriculture), 2010	44	Women in agriculture (as a percentage of labour force in agriculture), 2010	29
Gross Domestic Product (GDP) (in millions of US\$), 2010	11,865	Gross Domestic Product (GDP) (in millions of US\$), 2010	361,276
GDP by economic activity (as a percentage of GDP), 2009 (agriculture / industry / services)	10/33/57	GDP by economic activity (as a percentage of GDP), 2009 (agriculture / industry / services)	3/31/66
COMMODITY EXPORT DEPENDENCE		COMMODITY EXPORT DEPENDENCE	
Commodity exports (in millions of US\$ and as a percentage of merchandise exports), 2009-2010	2,615 (73%)	Commodity exports (in millions of US\$ and as a percentage of merchandise exports), 2009-2010	44,546 (60%)
Commodity exports (as a percentage of GDP), 2009-2010	25	Commodity exports (as a percentage of GDP), 2009-2010	14
Exports by commodity groups (as a percentage of total commodity exports), 2009-2010		Exports by commodity groups (as a percentage of total commodity exports), 2009-2010	
All food items	26	All food items	15
Agricultural raw materials	1	Agricultural raw materials	4
Fuels	2	Fuels	17
Ores, metals, precious stones and non-monetary gold	70	Ores, metals, precious stones and non-monetary gold	64
Three leading commodity exports (as a percentage of commodity exports), 2009-2010	58	Three leading commodity exports (as a percentage of commodity exports), 2009-2010	45
(286) Ores and concentrates of uranium or thorium	24	(681) Silver, platinum, other metals of the platinum group	21
(03) Fishery products	20	(321) Coal, whether or not pulverized, not agglomerated	13
(667) Pearls, precious & semi-precious stones	14	(281) Iron ore and concentrates	11
Leading destination markets for commodity exports (as a percentage of commodity exports), 2009-2010	83	Leading destination markets for commodity exports (as a percentage of commodity exports), 2009-2010	70
EU (27), China, United States, Canada, South Africa	41/15/13/8/6	EU (27), China, Japan, United States, India	32/15/10/7/6
Export concentration ratio	(2000) 0.4022 (2010) 0.2575	Export concentration ratio	(2000) 0.1176 (2010) 0.1547
Membership in international commodity bodies	ILZSG	Membership in international commodity bodies	IGC, ILZSG, ICAC, ISO
FOOD SECURITY		FOOD SECURITY	
Commodity import value (in millions of US\$ and as a percentage of merchandise import value), 2009-2010	488 (21%)	Commodity import value (in millions of US\$ and as a percentage of merchandise import value), 2009-2010	4,426 (20%)
Net food imports (in millions of US\$), 2010	- 592	Net food imports (in millions of US\$), 2010	- 2,358
MDG 1.1: Percentage of population below 1US\$ (PPP) per day, 1990/92 and 2007/09	49 - n.a.	MDG 1.1: Percentage of population below 1US\$ (PPP) per day, 1990/92 and 2007/09	24 - n.a.
MDG 1.9: Percentage of the population undernourished, 1991 and 2007	32 - 18	MDG 1.9: Percentage of the population undernourished, 1991 and 2007	5 - 5


SWAZILAND
GENERAL INFORMATION

Total area (square kilometres), 2009	17,360
Agricultural area (as a percentage of total area), 2009	70
Population (1,000 inhabitants), 2010	1,186
Labour force (1,000 workers), 2010	479
Women in labour force (as a percentage of total labour force), 2010	49
Labour force in agriculture (as a percentage of total labour force), 2010	29
Women in agriculture (as a percentage of labour force in agriculture), 2010	54
Gross Domestic Product (GDP) (in millions of US\$), 2010	3,927
GDP by economic activity (as a percentage of GDP), 2009 (agriculture / industry / services)	8/45/47

COMMODITY EXPORT DEPENDENCE

Commodity exports (in millions of US\$ and as a percentage of merchandise exports), 2009-2010	625 (41%)
Commodity exports (as a percentage of GDP), 2009-2010	18
Exports by commodity groups (as a percentage of total commodity exports), 2009-2010	
All food items	82
Agricultural raw materials	11
Fuels	1
Ores, metals, precious stones and non-monetary gold	6
Three leading commodity exports (as a percentage of commodity exports), 2009-2010	69
(061) Sugar, molasses and honey	47
(098) Edible products and preparations, n.e.s.	14
(24+25) Forestry products	8
Leading destination markets for commodity exports (as a percentage of commodity exports), 2009-2010	70
EU (27), New Zealand, Australia, United States, Nigeria	46/8/7/5/4
Export concentration ratio	(2000) 0.2274 (2010) 0.2301
Membership in international commodity bodies	ISO

FOOD SECURITY

Commodity import value (in millions of US\$ and as a percentage of merchandise import value), 2009-2010	338 (55%)
Net food imports (in millions of US\$), 2010	- 109
MDG 1.1: Percentage of population below 1US\$ (PPP) per day, 1990/92 and 2007/09	79 - 63
MDG 1.9: Percentage of the population undernourished, 1991 and 2007	12 - 19